

1155 S. BLACK HORSE PIKE

Williamstown, NJ



PREMIER RETAIL SPACE AVAILABLE

+/- 18,900 SF

CAN BE SUBDIVIDED

PROPERTY FEATURES

- Price: Call for information
- Ideal for indoor recreational facility, training facility, fitness center, specialty fitness concepts, retail showrooms (furniture/interior design retailer) & more
- Monument signage
- Dock & drive-in for retailer showroom/warehouse hybrid
- Abundant parking
- Situated directly off heavily traveled Black Horse Pike (+/-16,000 VPD)
- Located within nationally anchored retail corridor



PROPERTY PHOTOS



The foregoing information was furnished to us by sources which we deem to be reliable, but no warranty or representation is made as to the accuracy thereof. Subject to correction of errors, omissions, change of price, prior sale or withdrawal from market without notice.



Mike Scanzano
Executive Vice President
856.769.4111
mike.scanzano@wolfcre.com

Corey Hassman
Vice President
856.261.5812
corey.hassman@wolfcre.com



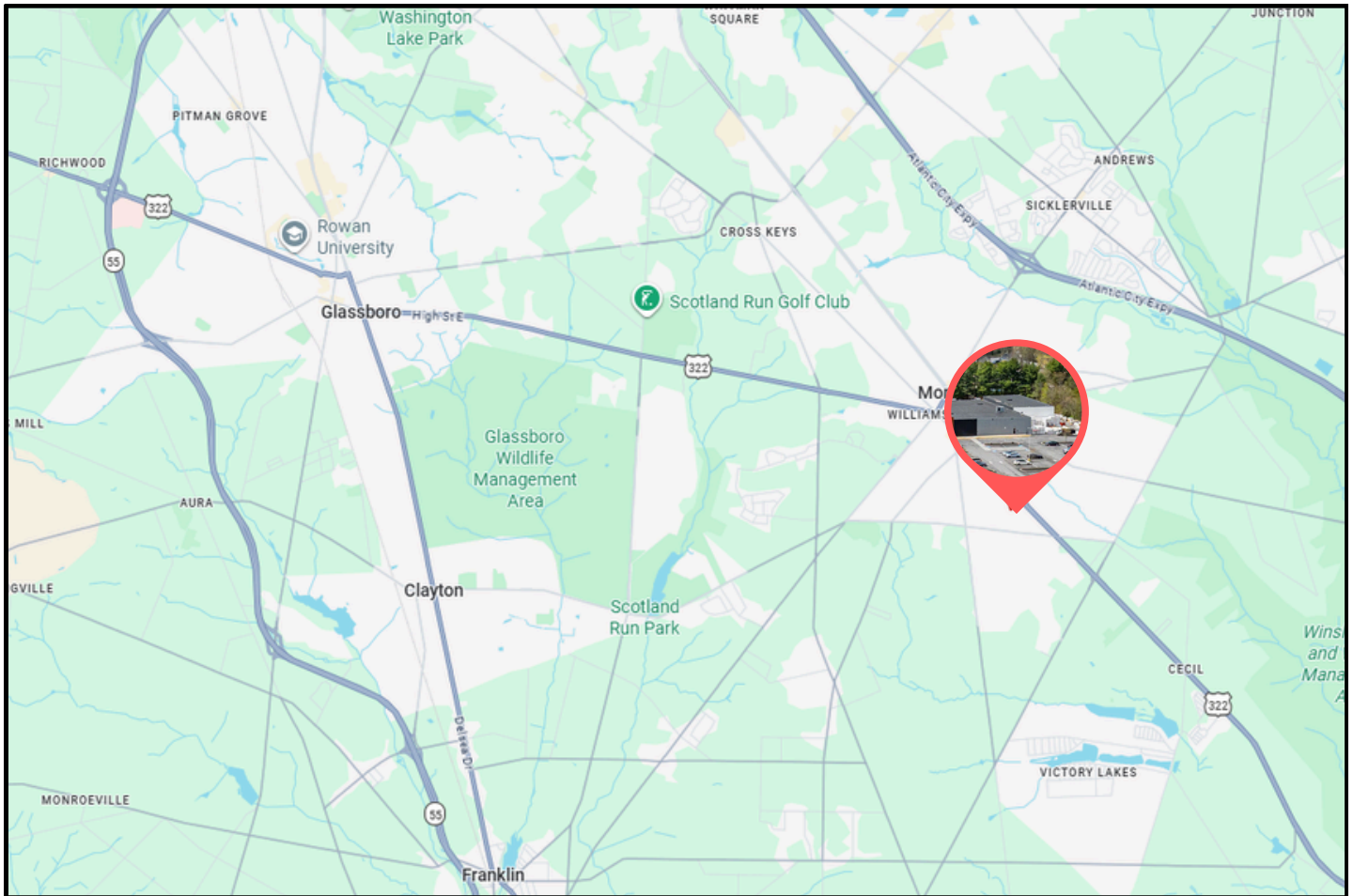
SITE PLAN

BLACK HORSE PIKE



The foregoing information was furnished to us by sources which we deem to be reliable, but no warranty or representation is made as to the accuracy thereof. Subject to correction of errors, omissions, change of price, prior sale or withdrawal from market without notice.

LOCAL MAP



DISTANCES

AC Expressway	3.5 miles
Route 42	3 miles
US 322	.1 miles
Route 55	6 miles
Route 73	10 miles
I-295	12 miles

HEALTHCARE

ALL WITHIN A 3 MILE RADIUS

Virtua Health
 Inspira Health
 Jefferson Health
 AtlantiCare

RETAILERS, ENTERTAINMENT & RESTAURANTS

ALL WITHIN A 3 MILE RADIUS

Target	Applebee's
Walmart	Chick-fil-A
Home Depot	Texas Roadhouse
Lowe's	Olive Garden
ShopRite	Panera Bread
Aldi	Library IV
Kohl's	Ash & Oak
Monster Mini Golf	
Bowlero	
Scotland Run	
Regal Cinema	

The foregoing information was furnished to us by sources which we deem to be reliable, but no warranty or representation is made as to the accuracy thereof. Subject to correction of errors, omissions, change of price, prior sale or withdrawal from market without notice.



www.WolfCRE.com

Mike Scanzano
 Executive Vice President
 856.769.4111
mike.scanzano@wolfcre.com

Corey Hassman
 Vice President
 856.261.5812
corey.hassman@wolfcre.com

