

112 HADDONTOWNE COURT

Cherry Hill, NJ



PREMIER OFFICE CONDO FOR SALE

SUITE 103

+/- 1,800 SF

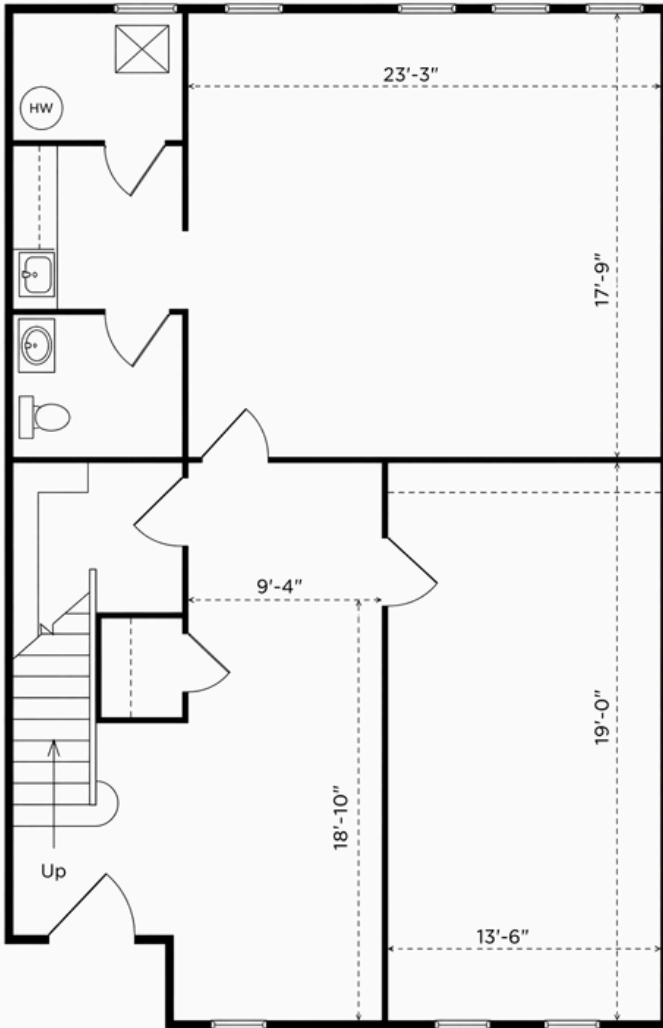
PROPERTY FEATURES

- Price: Call for information
- Ideal for professional office users
- Positioned within a well-established office condominium campus
- First floor includes reception, half bath, kitchenette, two large work areas
- Loft area includes executive office, half bath, large conference room
- Easy access to I-295, Routes 70 and 30

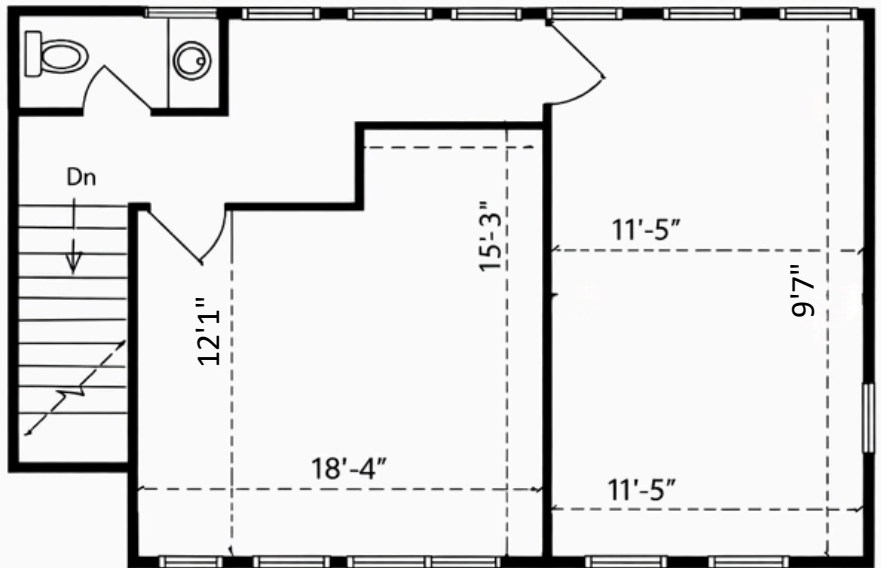


FLOOR PLAN

FIRST FLOOR



LOFT



The foregoing information was furnished to us by sources which we deem to be reliable, but no warranty or representation is made as to the accuracy thereof. Subject to correction of errors, omissions, change of price, prior sale or withdrawal from market without notice.



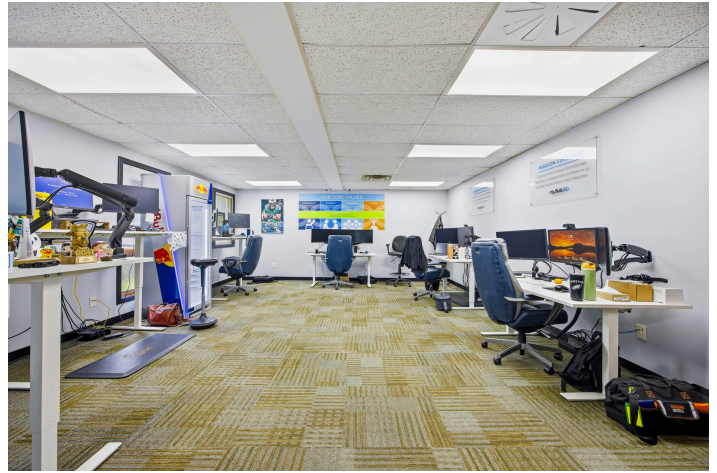
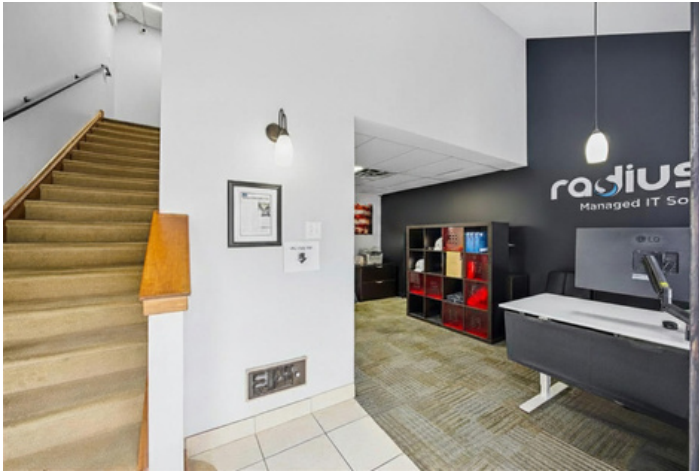
www.WolfCRE.com

Mike Scanzano
Executive Vice President
856.465.6637
mike.scanzano@wolfcre.com

Corey Hassman
Vice President
856.261.5812
corey.hassman@wolfcre.com



PROPERTY PHOTOS



The foregoing information was furnished to us by sources which we deem to be reliable, but no warranty or representation is made as to the accuracy thereof. Subject to correction of errors, omissions, change of price, prior sale or withdrawal from market without notice.

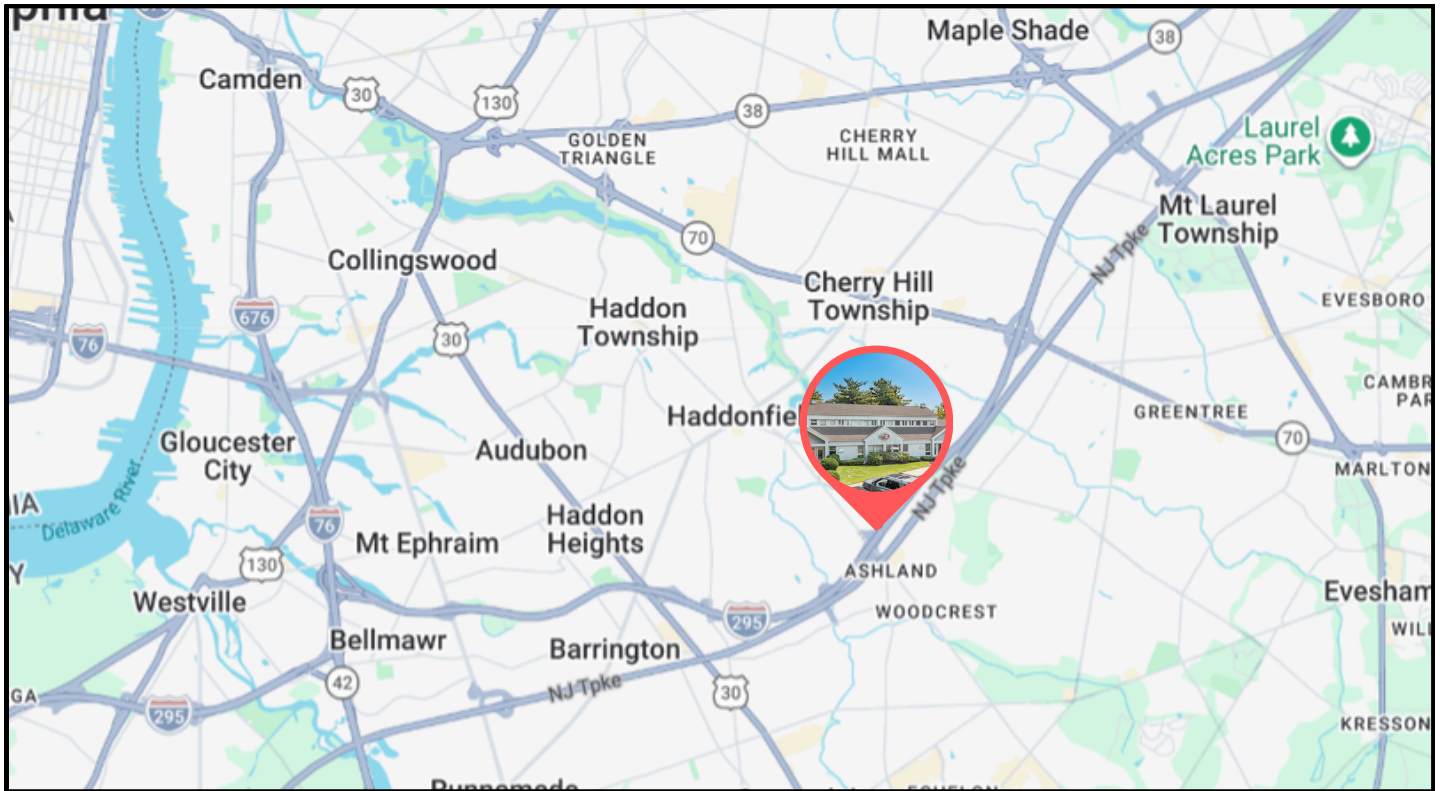


Mike Scanzano
Executive Vice President
856.465.6637
mike.scanzano@wolfcre.com

Corey Hassman
Vice President
856.261.5812
corey.hassman@wolfcre.com



LOCAL MAP



DISTANCES

Route 70	1.5 miles
Route 38	3 miles
I-295	.5 miles
NJ Turnpike	6 miles
Route 73	7 miles
Philadelphia	8 miles

RETAILERS, ENTERTAINMENT & RESTAURANTS

ALL WITHIN A 3 MILE RADIUS

Cherry Hill Mall	Wegman's
• Capital Grill	HomeGoods
• Seasons 52	Costco
• Nordstrom Rack	AMC Cherry Hill
• Apple	Bowlero
• lululemon	Cooper River Park
• Sephora	

HEALTHCARE

ALL WITHIN A 3 MILE RADIUS

Virtua Health
Cooper Health
Jefferson Health
Penn Medicine



The foregoing information was furnished to us by sources which we deem to be reliable, but no warranty or representation is made as to the accuracy thereof. Subject to correction of errors, omissions, change of price, prior sale or withdrawal from market without notice.



Mike Scanzano
Executive Vice President
856.465.6637
mike.scanzano@wolfcre.com

Corey Hassman
Vice President
856.261.5812
corey.hassman@wolfcre.com

