

# 1291 W. SHERMAN AVE

Vineland, NJ



## PROMINENT DEVELOPMENT OPPORTUNITY

### 9.07 ACRES

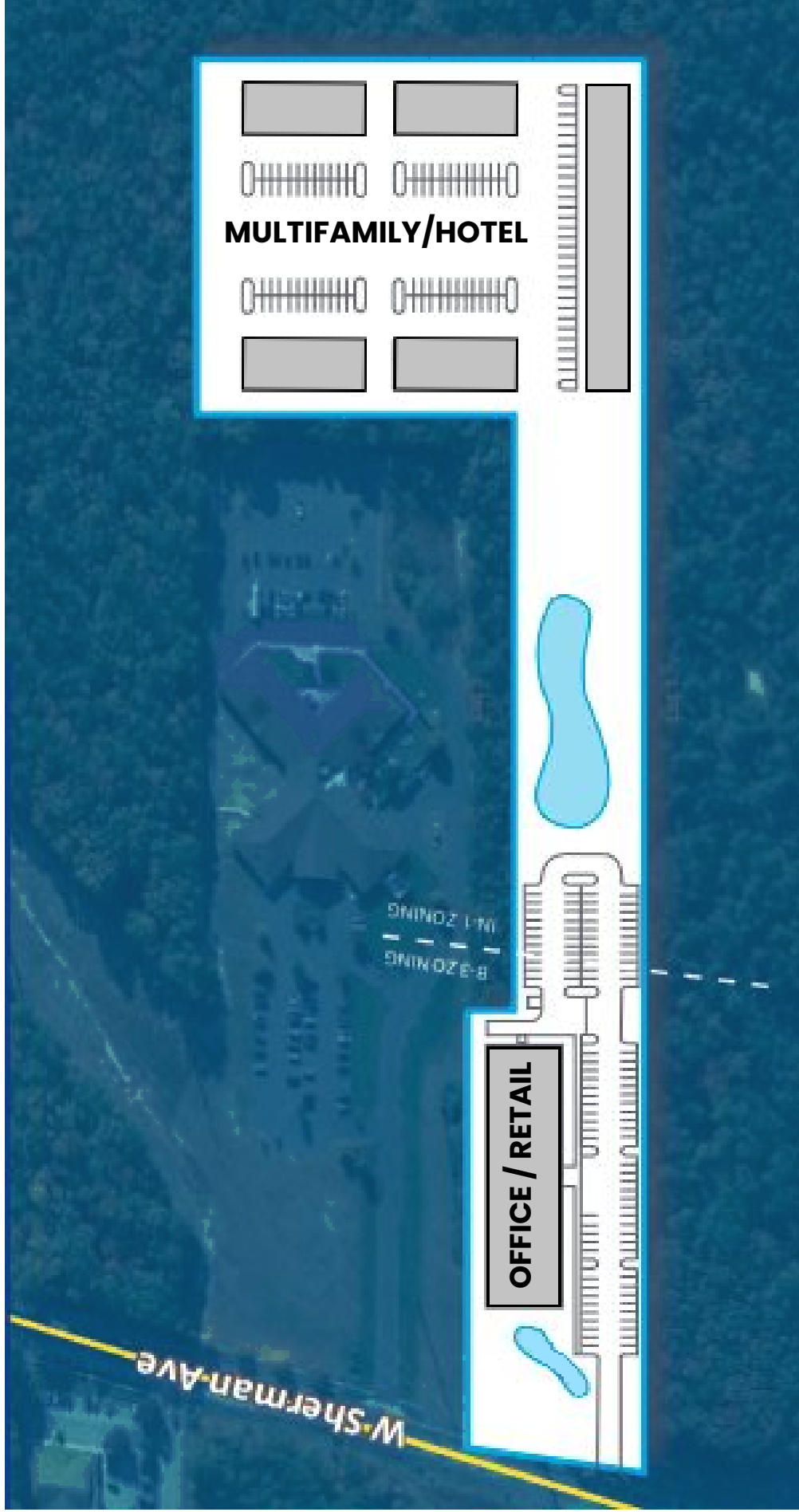
5,000 - 90,000 SF Build-to-Suit

### PROPERTY FEATURES

- Price: Call for information
- Up to 9.07 acres available
- 5,000-90,000 SF build-to-suit opportunity
- Ideal for retail, medical and office users
- .3 miles from Route 55
- Situated on West Sherman Ave with +/-15,000 VPD
- Less than 1/2 a mile from Inspira Vineland
- Close proximity to various healthcare networks



# PROPOSED PLAN



The foregoing information was furnished to us by sources which we deem to be reliable, but no warranty or representation is made as to the accuracy thereof. Subject to correction of errors, omissions, change of price, prior sale or withdrawal from market without notice.

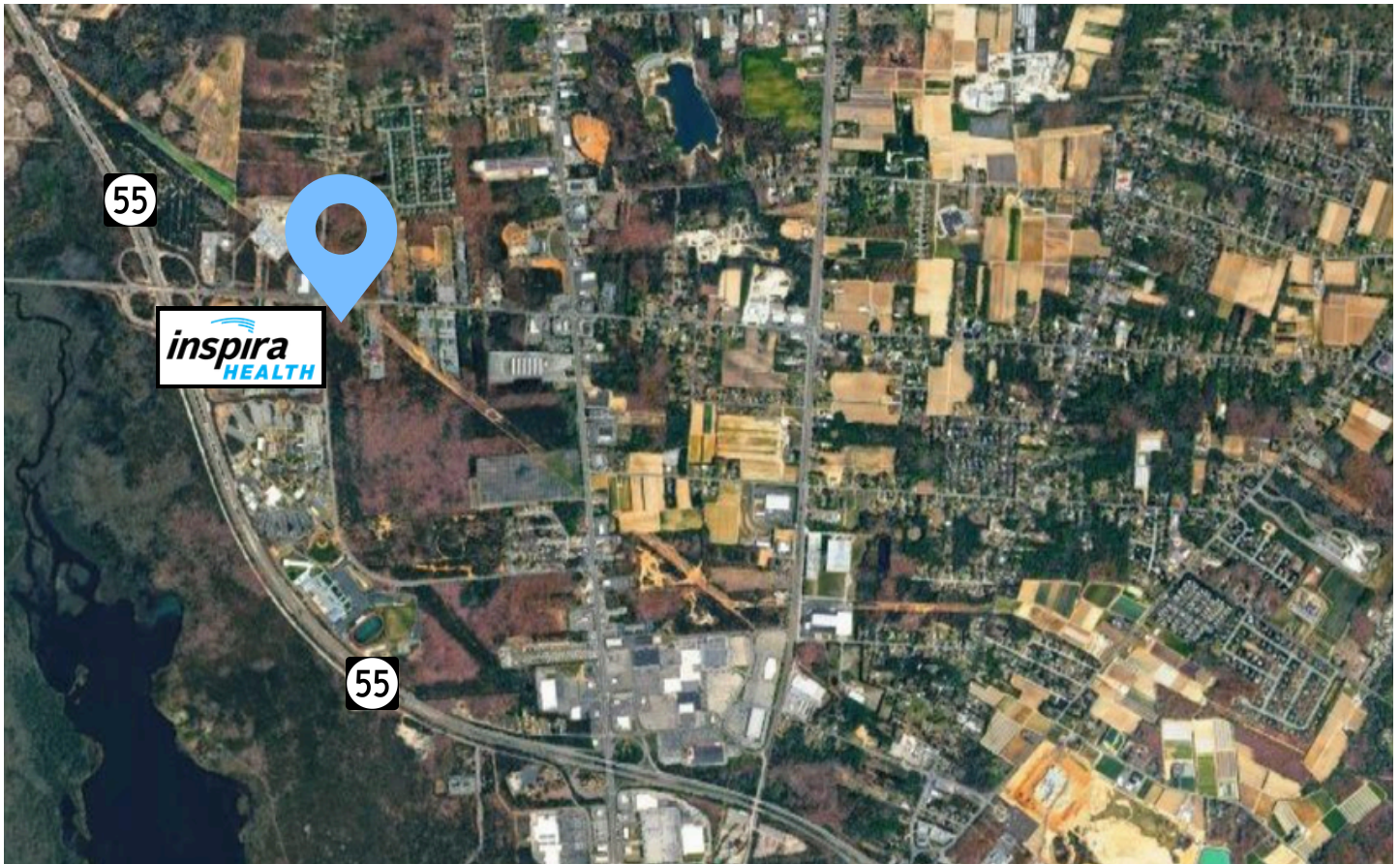
**Ryan Barikian**  
Vice President  
856.383.5355  
ryan.barikian@wolfcre.com



[www.WolfCRE.com](http://www.WolfCRE.com)



# LOCAL MAP OVERVIEW



## HEALTHCARE

- Inspira Medical Center
- Advocare
- Optum Urgent Care
- Cumberland Internal Medicine
- CVS Pharmacy



## RETAILERS

- Walmart
- BJ's
- Metro PCS
- Ulta Beauty
- Home Depot
- Bath & Body Works
- Marshalls
- Cumberland Mall
- Tractor Supply
- Lowe's



## ENTERTAINMENT

- Delsea Drive-In Theater
- Regal Theater
- Fun City Adventure Park
- Trout National Reserve Golf Course



## RESTAURANTS

- LongHorn Steakhouse
- Texas Roadhouse
- Applebee's
- Julio's on Main
- The Green Olive

The foregoing information was furnished to us by sources which we deem to be reliable, but no warranty or representation is made as to the accuracy thereof. Subject to correction of errors, omissions, change of price, prior sale or withdrawal from market without notice.



[www.WolfCRE.com](http://www.WolfCRE.com)

**Ryan Barikian**  
Vice President  
856.383.5355  
[ryan.barikian@wolfcre.com](mailto:ryan.barikian@wolfcre.com)

