

236 ROUTE 38

Moorestown, NJ



PREMIER MOORESTOWN OFFICE SUITE FOR LEASE

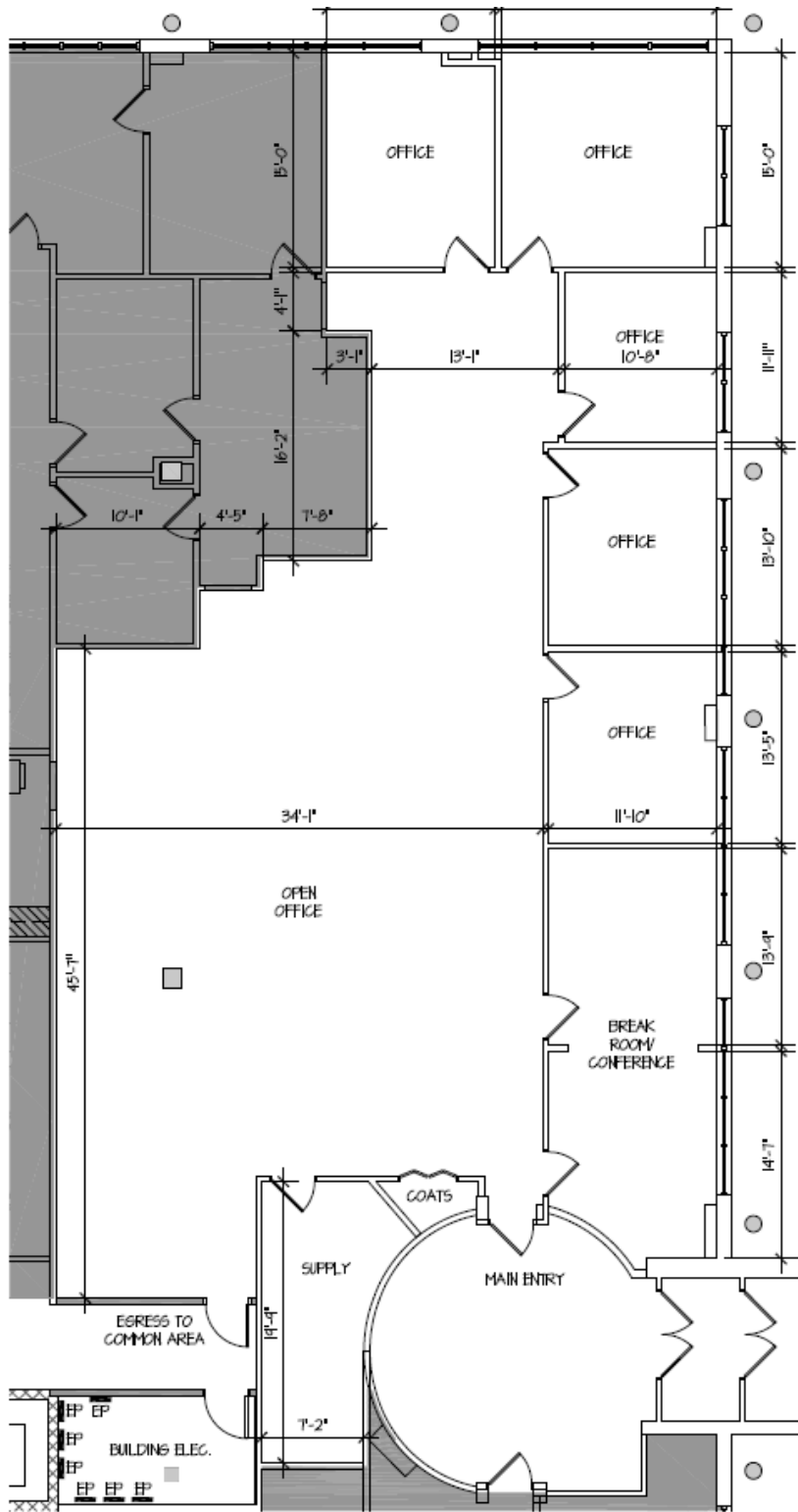
+/- 3,300 SF AVAILABLE

PROPERTY FEATURES

- Lease Price: \$16/SF NNN
- Ideal for professional office or medical office users
- Available for immediate occupancy
- Single-story building with interior and exterior suite access
- On-site ownership and management
- Building and suite signage
- Ample parking
- Convenient access to major routes 73, I-295 and NJ Turnpike
- Close proximity to various retailers, healthcare networks, and restaurants

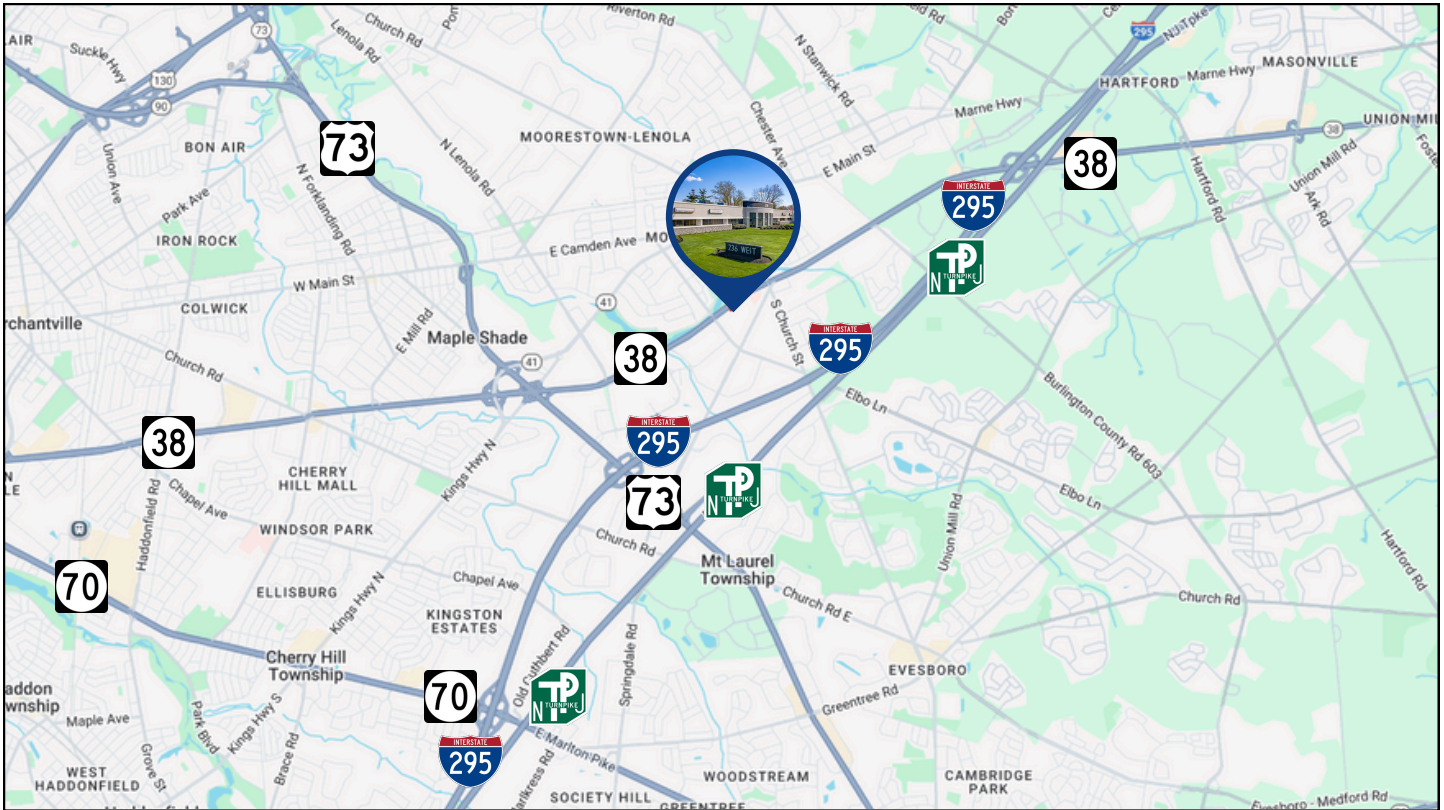





FLOOR PLAN



The foregoing information was furnished to us by sources which we deem to be reliable, but no warranty or representation is made as to the accuracy thereof. Subject to correction of errors, omissions, change of price, prior sale or withdrawal from market without notice.

LOCAL MAP & DEMOGRAPHICS



	 AVERAGE HOUSEHOLD INCOME	 POPULATION	 HOUSEHOLDS
1 MILE	\$161,155	5,709	2,086
3 MILES	\$128,572	66,734	26,700
5 MILES	\$129,910	202,087	79,401

NOTABLE BUSINESSES WITHIN A 5 MILE RADIUS

ENTERTAINMENT

- The Funplex
- Sky Zone
- Regal Moorestown
- Bury the Hatchet
-

HEALTHCARE

- Virtua Health
- Cooper Health
- NovaCare Rehab
- Riverside Medical
- Advocare

RETAILERS

- Cherry Hill Mall
- East Gate Square
- Home Goods
- Michaels
- Barnes & Noble
- Nordstrom
- Wegmans

RESTAURANTS/FAST FOOD

- Yard House
- honeygrow
- Harvest Seasonal Grill
- Monterey Grill
- Capital Grill
- Steak 38
- Eddie V's

The foregoing information was furnished to us by sources which we deem to be reliable, but no warranty or representation is made as to the accuracy thereof. Subject to correction of errors, omissions, change of price, prior sale or withdrawal from market without notice.