

PROMINENT MEDICAL/PROFESSIONAL OFFICE BUILDING FOR SALE



205 N. WHITE HORSE PIKE SOMERDALE, NJ



Corey Hassman
Senior Advisor
856.261.5812
corey.hassman@wolfcre.com

The foregoing information was furnished to us by sources which we deem to be reliable, but no warranty or representation is made as to the accuracy thereof.
Subject to correction of errors, omissions, change of price, prior sale or withdrawal from market without notice.



Wolf Commercial Real Estate
www.WolfCRE.com



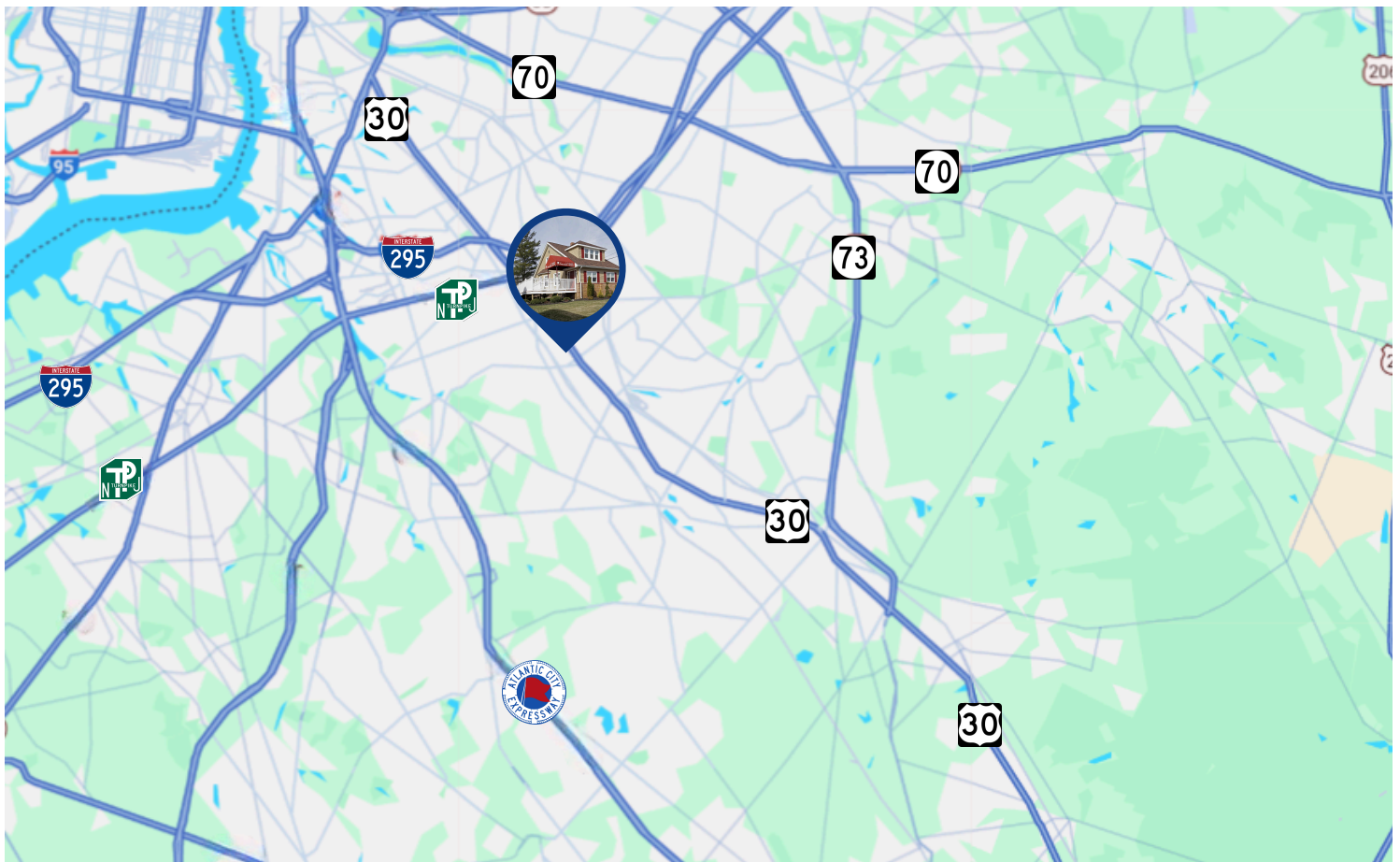
PROPERTY DESCRIPTION

Location:	205 N. White Horse Pike Somerdale, NJ
Size/SF Available:	1,373 SF on .52 acres
Sale Price:	\$370,000
Signage:	Monument Signage along Route 30
Additional:	Includes undeveloped land that can be utilized to expand or complement the existing building

PROPERTY AREA/HIGHLIGHTS

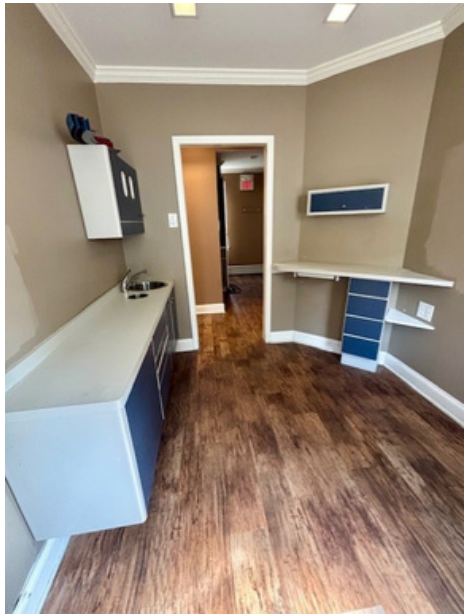
- Premier medical/professional office building previously used as a dental practice
- Ample parking
- Situated directly on Route 30 (White Horse Pike) with +/-21,000 Vehicles Per Day
- Easy access to major routes: Routes 73 and 70, I-295, NJ Turnpike, and Atlantic City Expressway
- Close to PATCO Speedline (Lindenwold Station)
- Offers both rear access to and from the highway, as well as front ingress and egress directly from the White Horse Pike.

AERIAL MAP



The foregoing information was furnished to us by sources which we deem to be reliable, but no warranty or representation is made as to the accuracy thereof. Subject to correction of errors, omissions, change of price, prior sale or withdrawal from market without notice.

ADDITIONAL IMAGES



The foregoing information was furnished to us by sources which we deem to be reliable, but no warranty or representation is made as to the accuracy thereof.
Subject to correction of errors, omissions, change of price, prior sale or withdrawal from market without notice.