

3000 ATRIUM WAY

Mount Laurel, NJ

Owned &
Managed By



PROMINENT OFFICE SUITES FOR LEASE

5,400 SF AVAILABLE

Suite 108: 4,094 SF

Suite 110: 1,306 SF

PROPERTY FEATURES

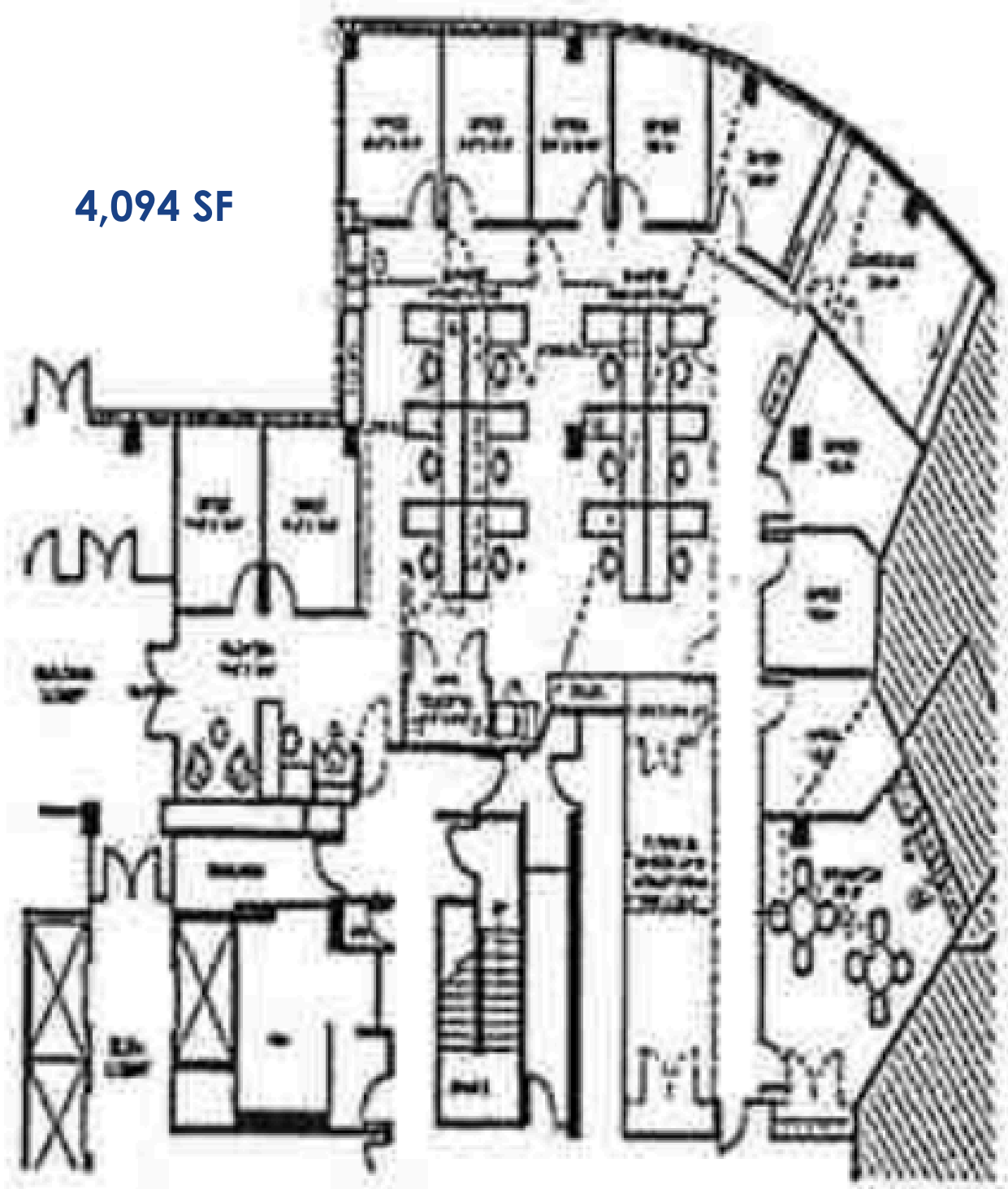
- Class "A" Office Building
- Owned & managed by reputable Nessel Development
- Immediately available
- Negotiable rental rate
- Fresh lobby and restroom upgrades
- Access to shared conference room

LOCATION HIGHLIGHTS

- Located In Horizon Corporate Center with immediate access to Route 73
- Easy access to Route 70, I-295 and NJ Turnpike



FLOOR PLAN | 3000 ATRIUM WAY | SUITE 108



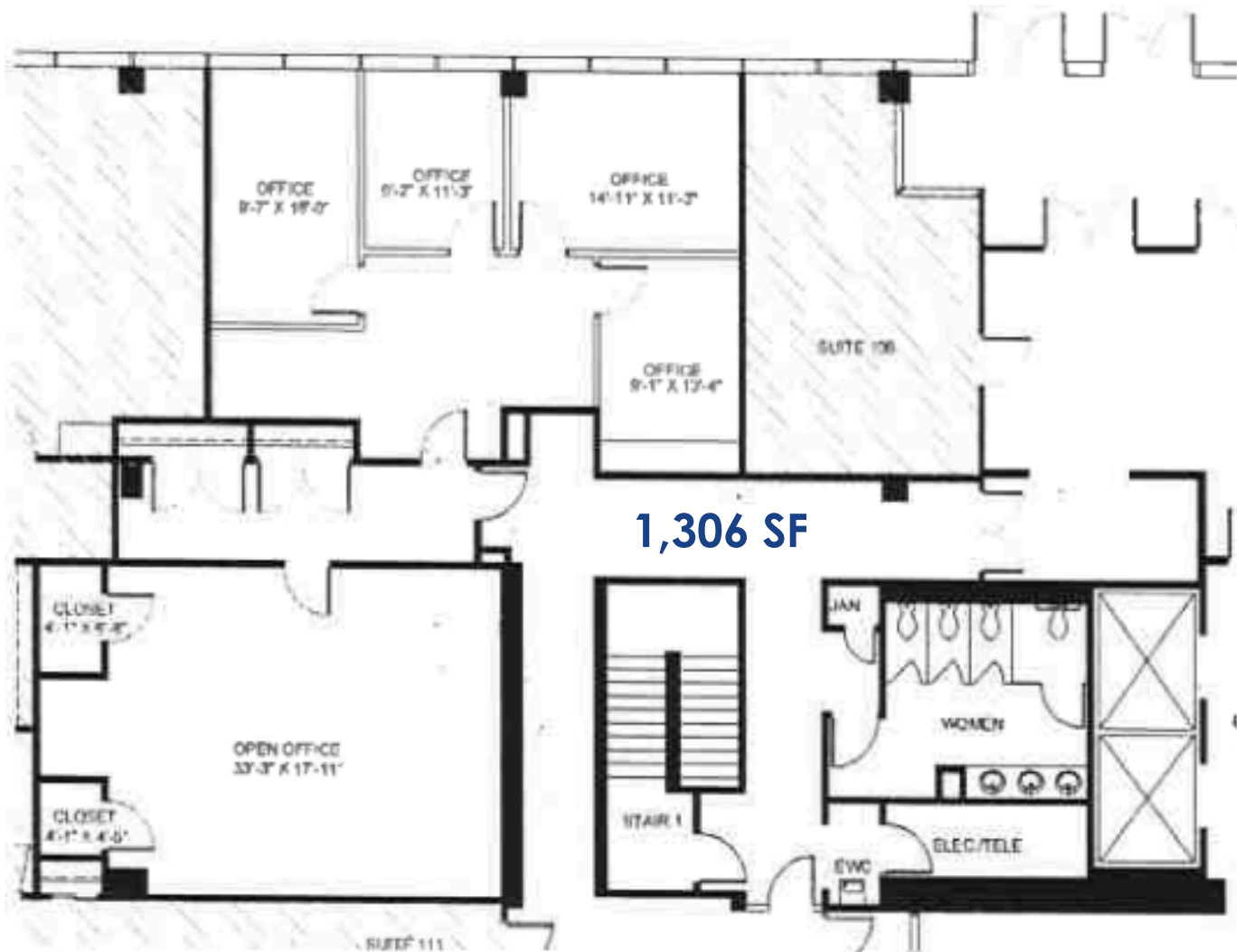
4,094 SF



www.WolfCRE.com

NEW JERSEY | PENNSYLVANIA | NEW YORK

FLOOR PLAN | 3000 ATRIUM WAY | SUITE 110



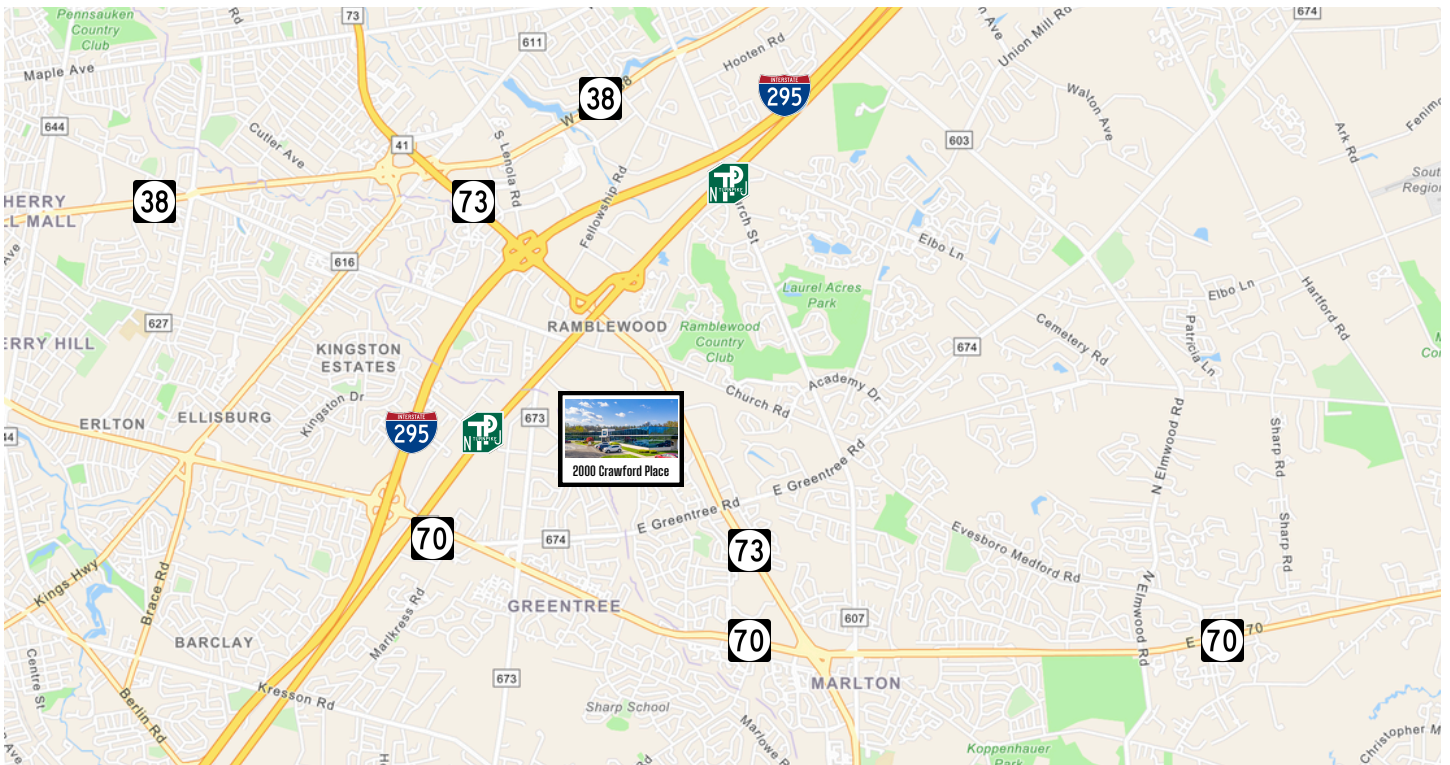
1,306 SF



www.WolfCRE.com

NEW JERSEY | PENNSYLVANIA | NEW YORK

LOCATION HIGHLIGHTS



MEDICAL

- Advocare
- Cooper Health
- Virtua Health

RECREATION

- LA Fitness
- Laurel Creek Country Club
- Lifetime Fitness
- Ramblewood Country Club

LODGING

- Hampton Inn
- Hilton Garden
- Hyatt Place
- Westin

RESTAURANTS

- Bone Fish Grill
- Farm and Fisherman
- Fleming's Steak House
- PJ Whelihan's Pub & Restaurant
- Plaza Azteca

RETAIL

- Centerton Shopping Center
- East Gate Square
- Moorestown Mall

The foregoing information was furnished to us by sources which we deem to be reliable, but no warranty or representation is made as to the accuracy thereof. Subject to correction of errors, omissions, change of price, prior sale or withdrawal from market without notice.