

2000 CRAWFORD PLACE

Mount Laurel, NJ

Owned &
Managed By



PROMINENT OFFICE/FLEX SUITE FOR LEASE

5,293 SF

Suite Available

PROPERTY FEATURES

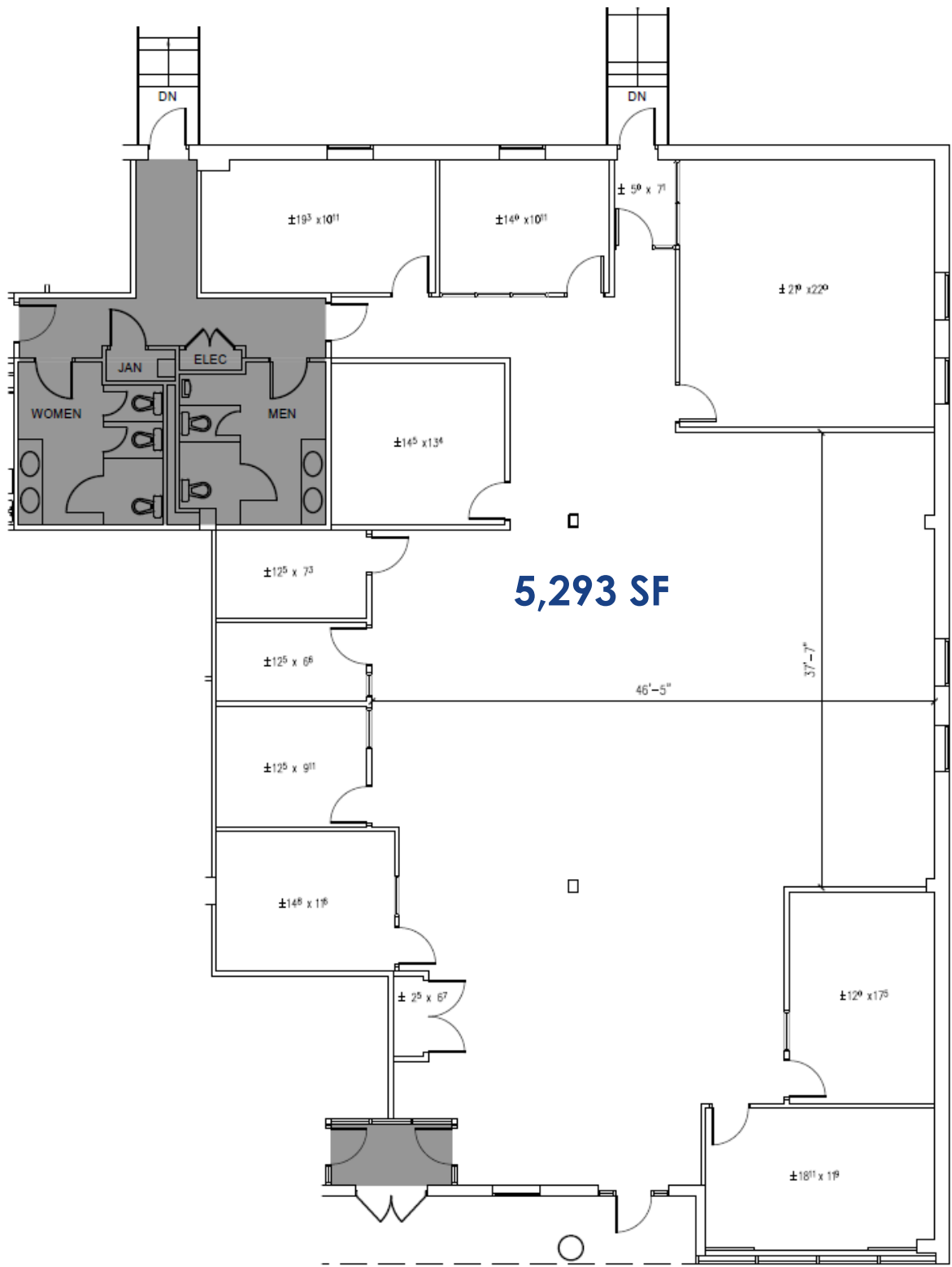
- Ideal for office or flex users
- Owned & managed by reputable Nessel Development
- Direct entry suite in single-story building
- Immediately available
- Negotiable rental rate

LOCATION HIGHLIGHTS

- Located In Horizon Corporate Center with immediate access to Route 73
- Easy access to Route 70, I-295 and NJ Turnpike



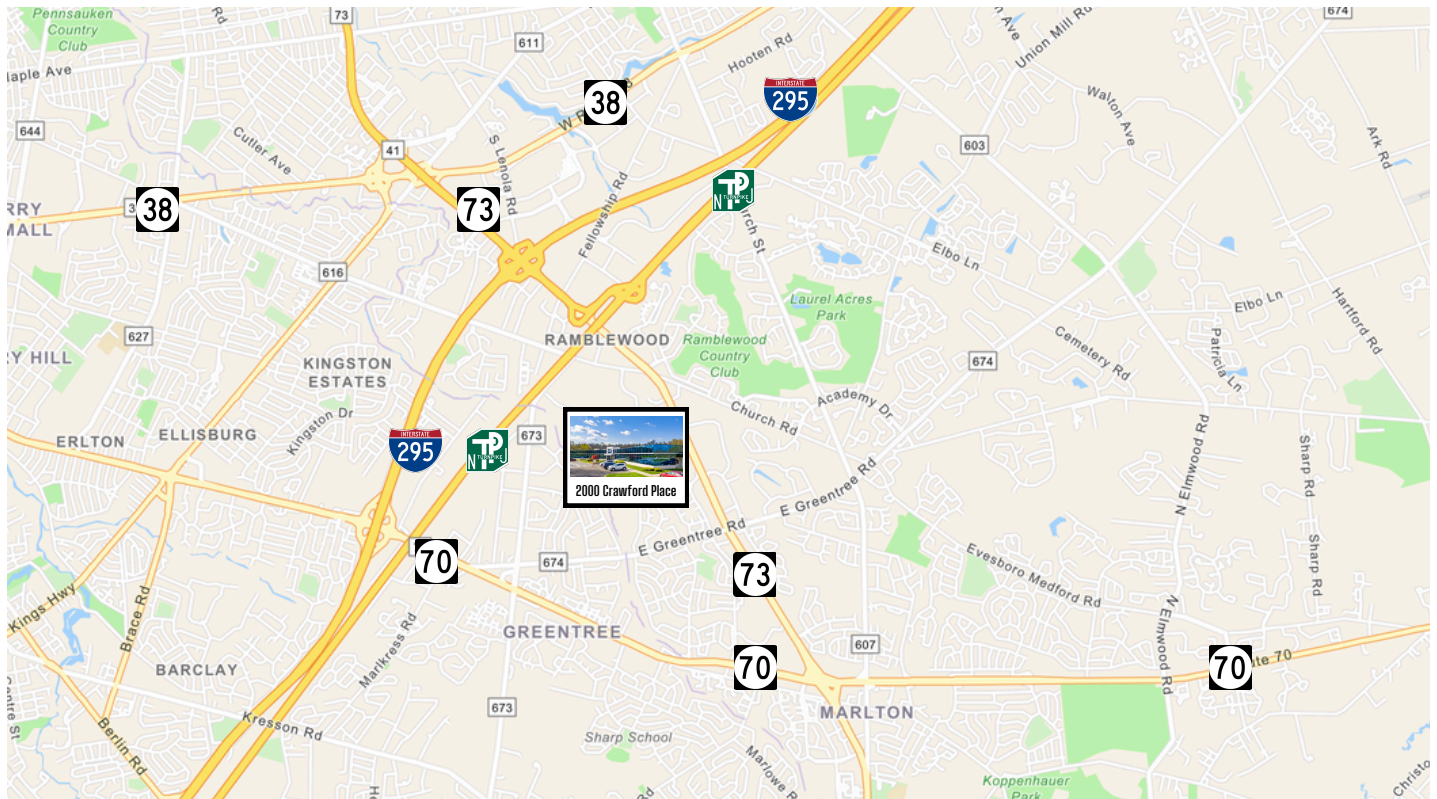
FLOOR PLAN | 2000 CRAWFORD PLACE | SUITE 900



www.WolfCRE.com

NEW JERSEY | PENNSYLVANIA | NEW YORK

LOCATION HIGHLIGHTS



MEDICAL

- Advocare
- Cooper Health
- Virtua Health

RECREATION

- LA Fitness
- Laurel Creek Country Club
- Lifetime Fitness
- Ramblewood Country Club

LODGING

- Hampton Inn
- Hilton Garden
- Hyatt Place
- Westin

RESTAURANTS

- Bone Fish Grill
- Farm and Fisherman
- Fleming's Steak House
- PJ Whelihan's Pub & Restaurant
- Plaza Azteca

RETAIL

- Centerton Shopping Center
- East Gate Square
- Moorestown Mall

The foregoing information was furnished to us by sources which we deem to be reliable, but no warranty or representation is made as to the accuracy thereof. Subject to correction of errors, omissions, change of price, prior sale or withdrawal from market without notice.