

# 2000 CRAWRFORD PLACE

Mount Laurel, NJ

Owned &  
Managed By



## PROMINENT OFFICE/FLEX SUITE FOR LEASE

**5,293 SF**

Suite Available

### PROPERTY FEATURES

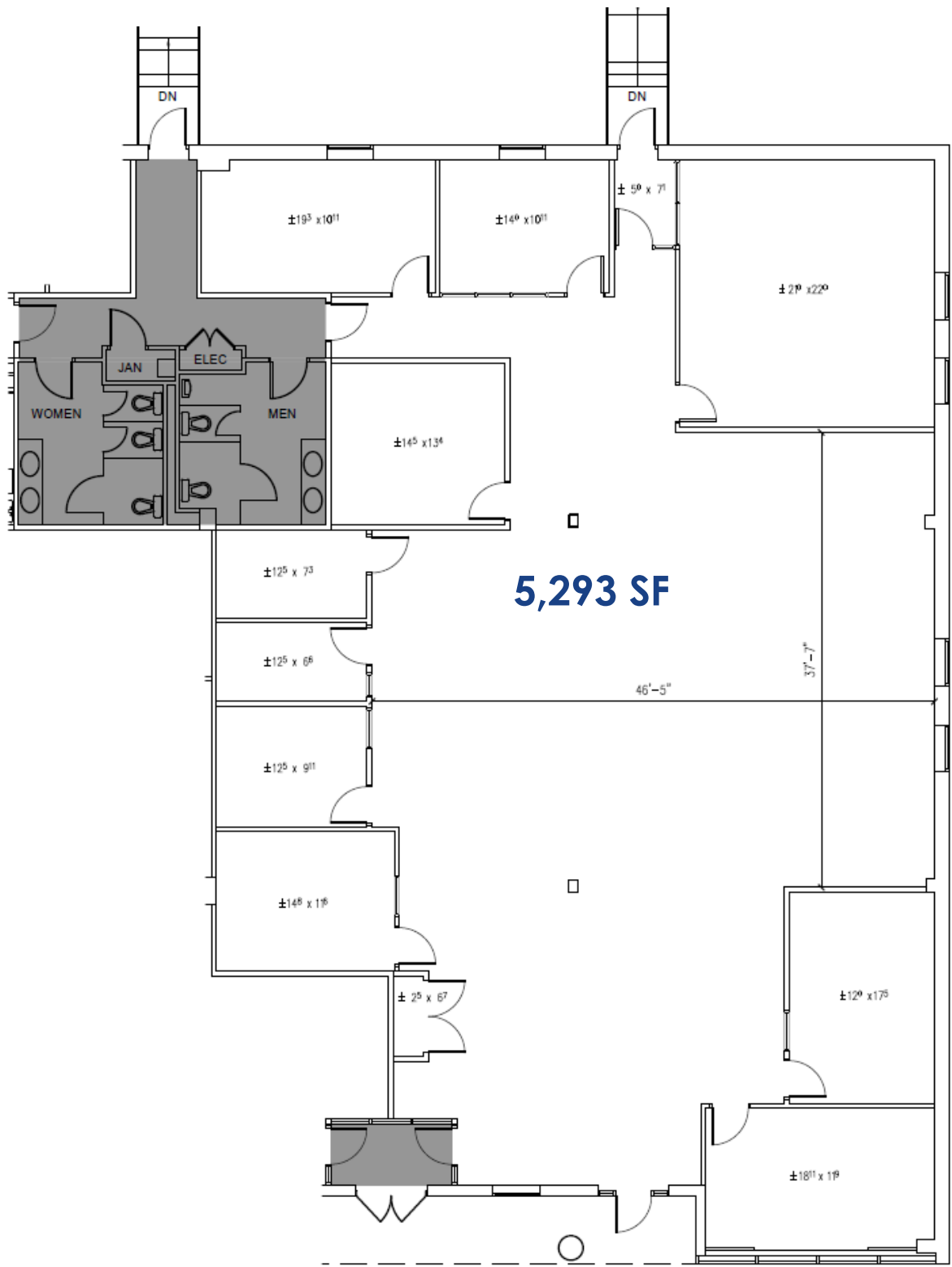
- Ideal for office or flex users
- Owned & managed by reputable Nessel Development
- Direct entry suite in single-story building
- Immediately available
- Negotiable rental rate

### LOCATION HIGHLIGHTS

- Located In Horizon Corporate Center with immediate access to Route 73
- Easy access to Route 70, I-295 and NJ Turnpike



# FLOOR PLAN | 2000 CRAWFORD PLACE | SUITE 900



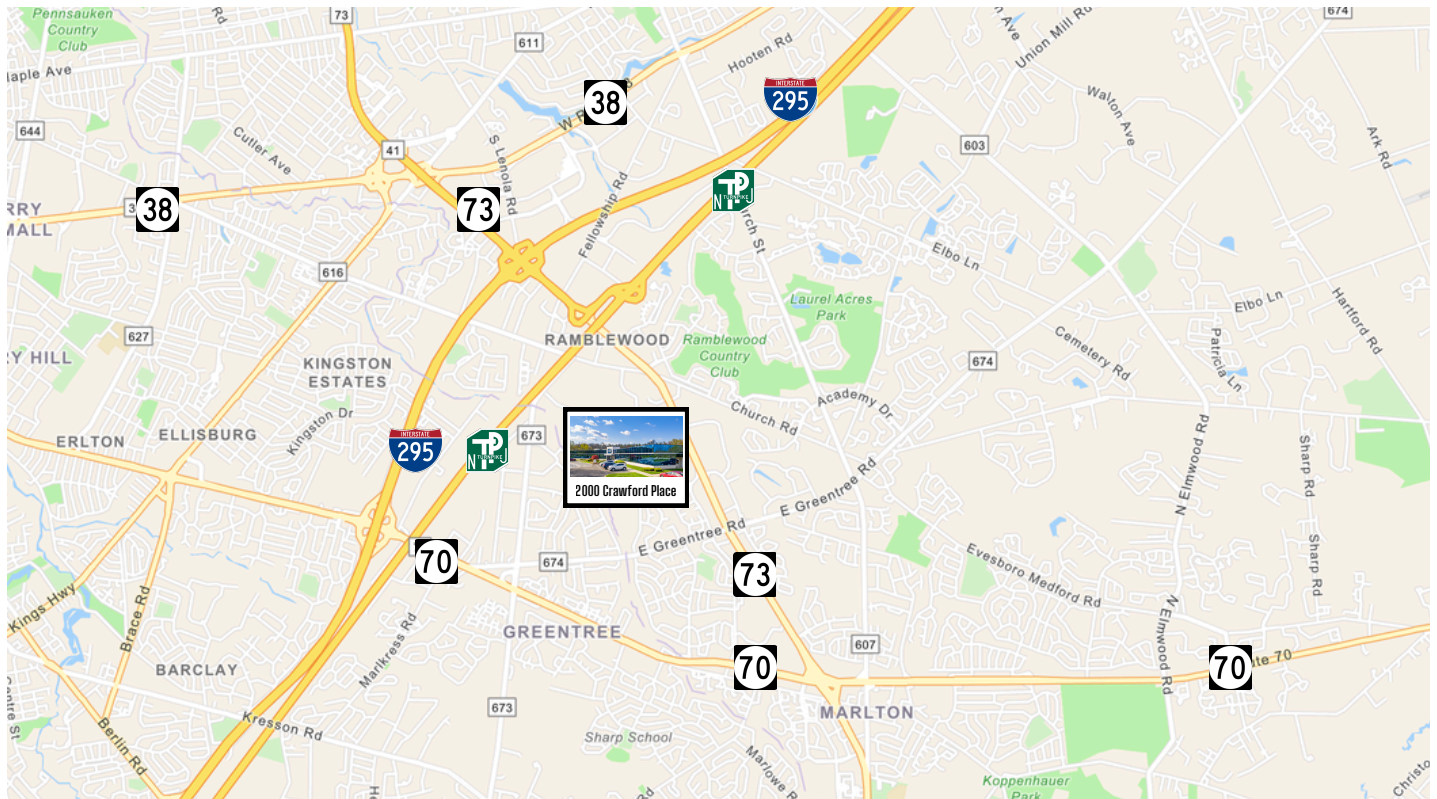
**5,293 SF**



[www.WolfCRE.com](http://www.WolfCRE.com)

NEW JERSEY | PENNSYLVANIA | NEW YORK

# LOCATION HIGHLIGHTS



## MEDICAL

- Advocare
- Cooper Health
- Virtua Health

## RECREATION

- LA Fitness
- Laurel Creek Country Club
- Lifetime Fitness
- Ramblewood Country Club

## LODGING

- Hampton Inn
- Hilton Garden
- Hyatt Place
- Westin

## RESTAURANTS

- Bone Fish Grill
- Farm and Fisherman
- Fleming's Steak House
- PJ Whelihan's Pub & Restaurant
- Plaza Azteca

## RETAIL

- Centerton Shopping Center
- East Gate Square
- Moorestown Mall

The foregoing information was furnished to us by sources which we deem to be reliable, but no warranty or representation is made as to the accuracy thereof. Subject to correction of errors, omissions, change of price, prior sale or withdrawal from market without notice.



[www.WolfCRE.com](http://www.WolfCRE.com)

**Erin Warwick**  
Executive Vice President  
609.744.9964  
[erin.warwick@wolfcre.com](mailto:erin.warwick@wolfcre.com)

