

PROMINENT RETAIL/OFFICE LEASE OPPORTUNITY



1717 SOUTH BROAD STREET PHILADELPHIA, PA

Eric Flocco
Executive Vice President
609.790.6940
eric.flocco@wolfcre.com

Corey Hassman
Senior Advisor
856.261.5812
corey.hassman@wolfcre.com



The foregoing information was furnished to us by sources which we deem to be reliable, but no warranty or representation is made as to the accuracy thereof. Subject to correction of errors, omissions, change of price, prior sale or withdrawal from market without notice.



Wolf Commercial Real Estate
www.WolfCRE.com



PROPERTY DESCRIPTION

Location: 1717 South Broad Street
Philadelphia, PA 19148

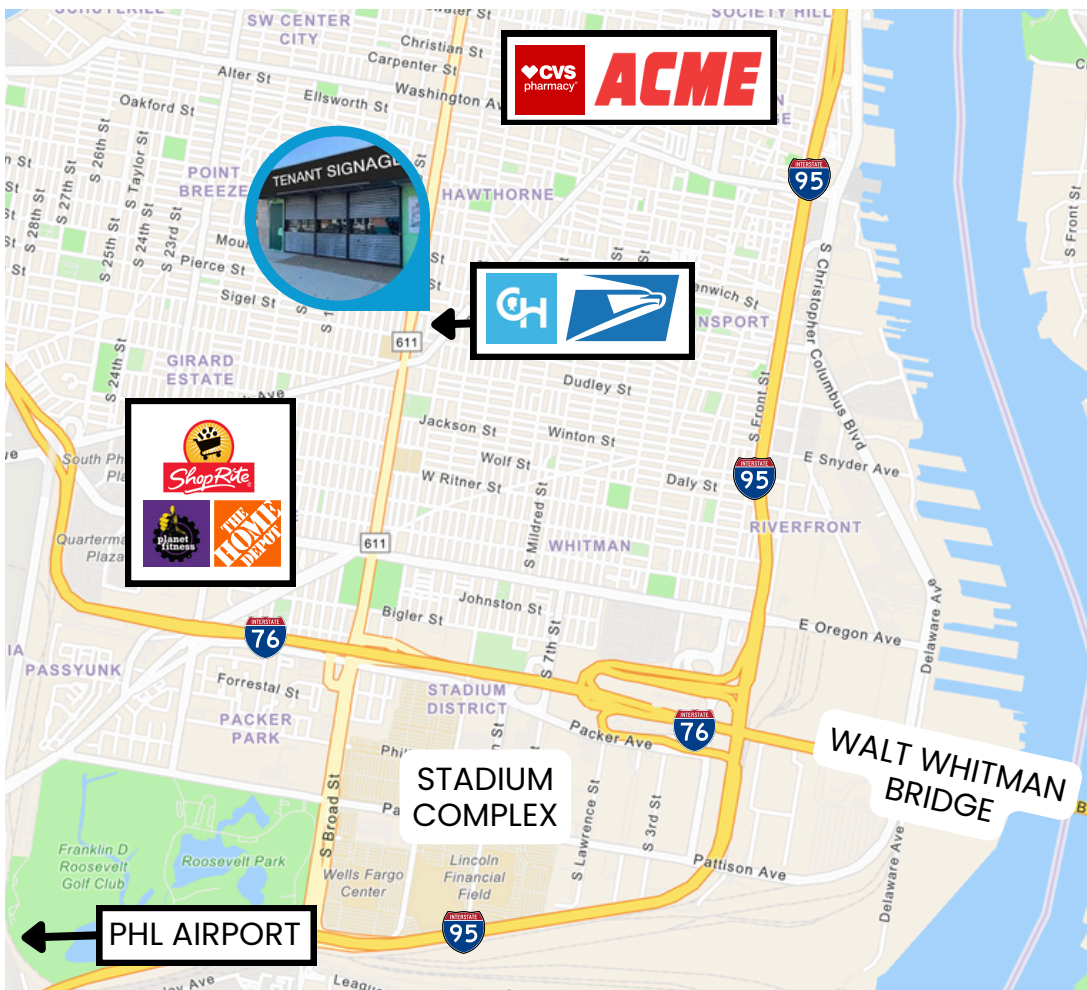
Size/SF Available: +/- 1,580 SF

Lease Price: Call for information

PROPERTY AREA/HIGHLIGHTS

- Ideal for cafe, deli, professional services, boutique & medical
- Immediate availability
- Rare off street parking in rear of premises
- Prominent Broad Street visibility & signage
- Close proximity to CHOP Primary Care Facility, Broad Street Subway, Passyunk Avenue, & adjacent USPS

RETAIL MAP & DEMOGRAPHICS



POPULATION

1 MILE	105,683
3 MILES	366,208
5 MILES	837,048

HOUSEHOLDS

1 MILE	44,681
3 MILES	169,003
5 MILES	352,336

AV. HOUSEHOLD INCOME

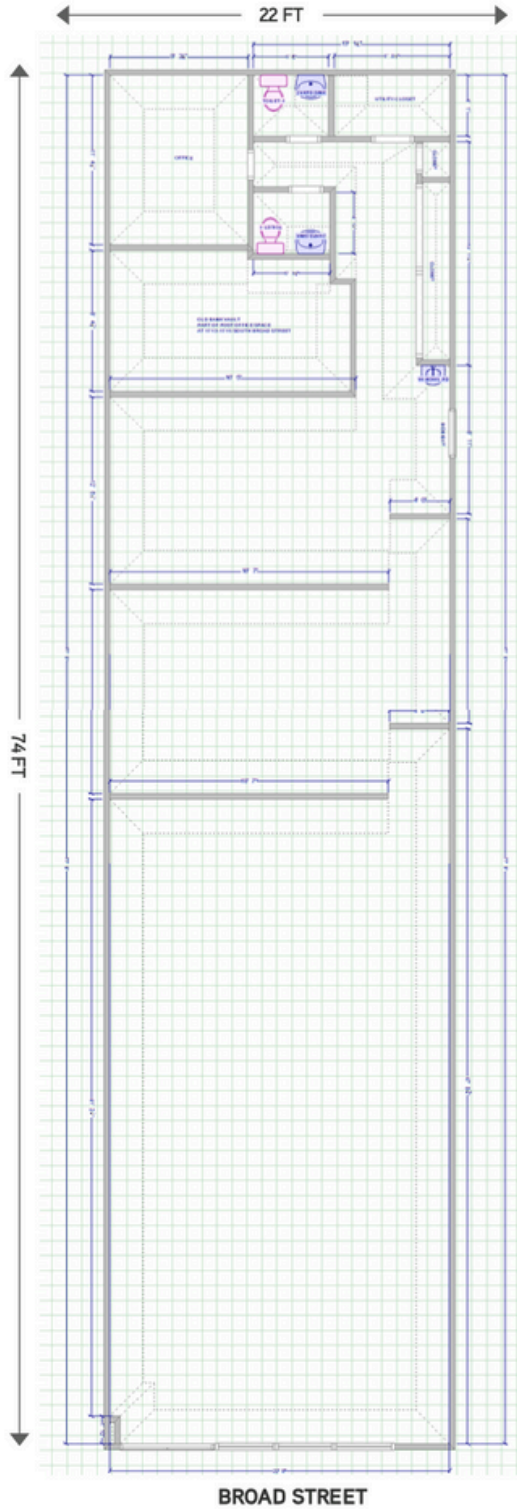
1 MILE	\$94,388
3 MILES	\$103,433
5 MILES	\$81,446

TRANSIT & LANDMARKS

PHL AIRPORT	7.0 MI
WALT WHIT.	4.0 MI
STADIUMS	2.0 MI

The foregoing information was furnished to us by sources which we deem to be reliable, but no warranty or representation is made as to the accuracy thereof. Subject to correction of errors, omissions, change of price, prior sale or withdrawal from market without notice.

SITE PLAN



The foregoing information was furnished to us by sources which we deem to be reliable, but no warranty or representation is made as to the accuracy thereof. Subject to correction of errors, omissions, change of price, prior sale or withdrawal from market without notice.