

First Class Office For Sublease In Philadelphia

1700 Market Street, Philadelphia, PA



CONTACT US

Joe Fox
Senior Advisor
484.772.5889
joseph.fox@wolfcre.com

Andrew Koller
Analyst & Advisor
610.505.5504
andrew.koller@wolfcre.com



The foregoing information was furnished to us by sources which we deem to be reliable, but no warranty or representation is made as to the accuracy thereof.
Subject to correction of errors, omissions, change of price, prior sale or withdrawal from market without notice.



Wolf Commercial Real Estate
www.WolfCRE.com



1700 Market Street Main Lobby



SUBLEASE INFORMATION

- Term through January 31, 2029
- 6,044 SF available
- Southeast corner of 31st floor
- Well-appointed reception area
- Large conference room (10 seats)
- Two phone rooms
- Large open kitchen with island
- 47 work stations
- Beautiful high tech space with spectacular views



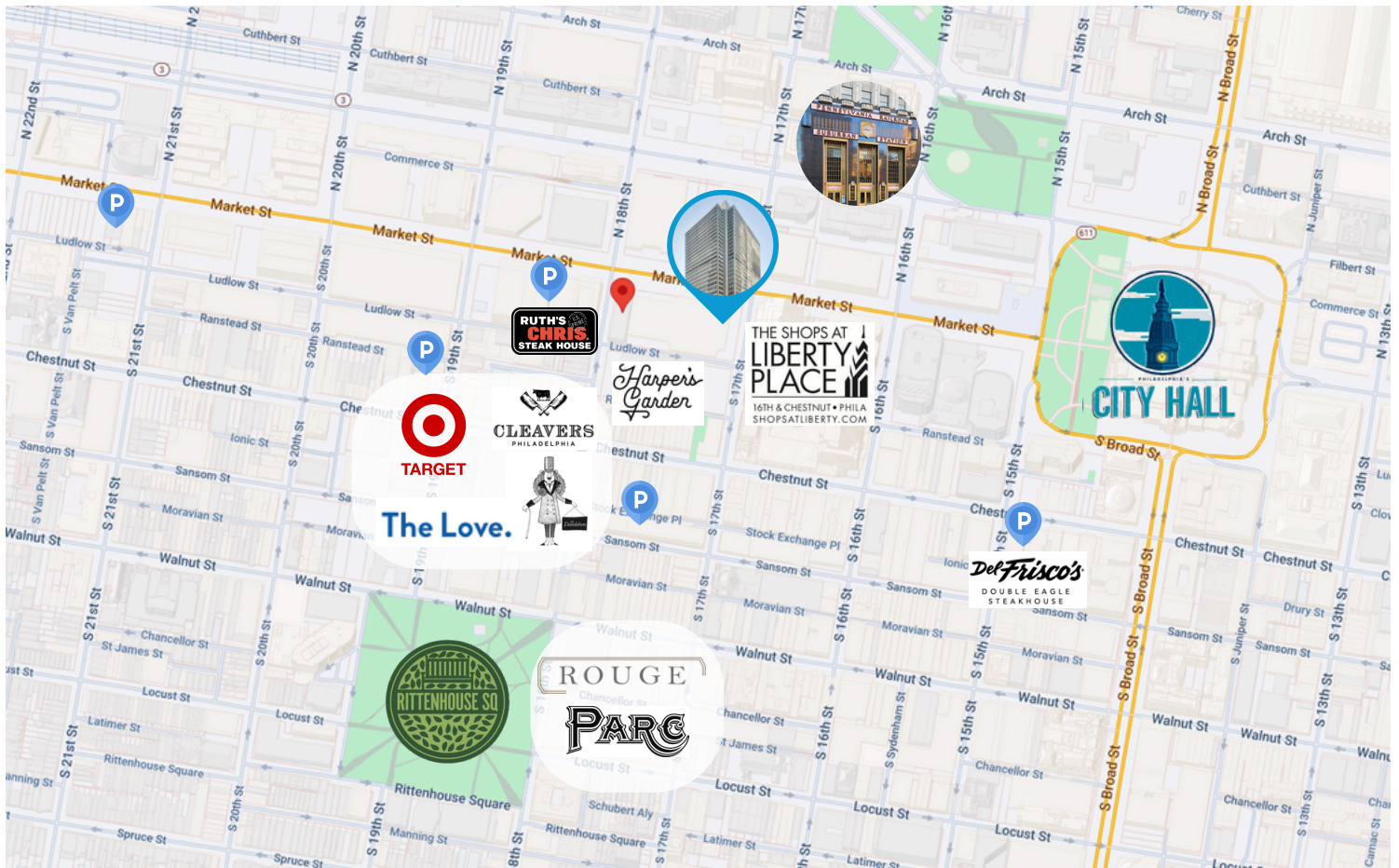
BUILDING AMENITIES

- 24-Hour Access
- Food Service
- Bicycle Storage
- Convenience Store
- Daycare
- Fitness Center
- Banking
- Roof Terrace
- Fully Carpeted
- Resturant
- Outdoor Seating
- Shower Facilities

The foregoing information was furnished to us by sources which we deem to be reliable, but no warranty or representation is made as to the accuracy thereof. Subject to correction of errors, omissions, change of price, prior sale or withdrawal from market without notice.

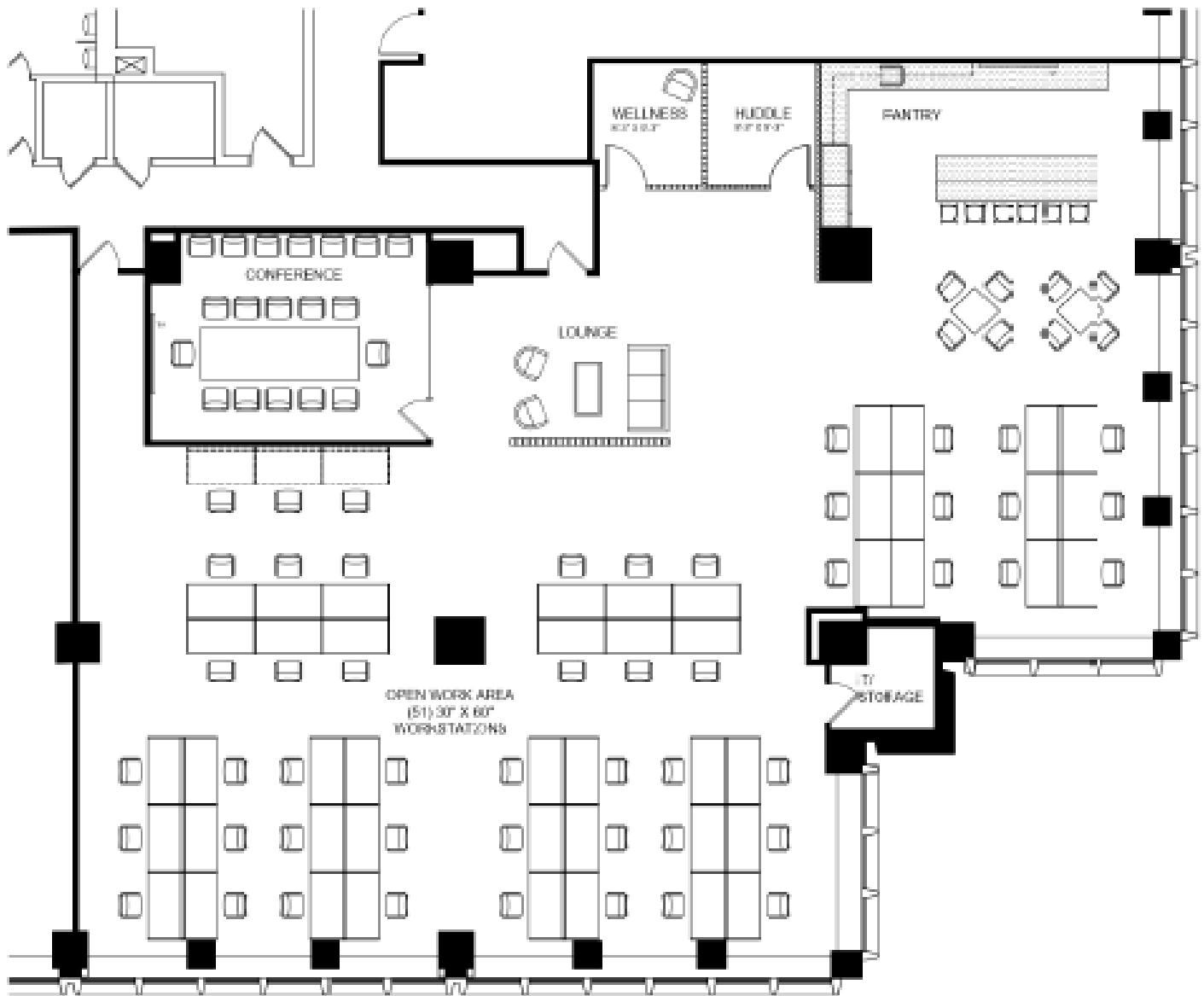
LOCATION HIGHLIGHTS

- Prestigious Market Street Address
- Two blocks from Rittenhouse Square
- Three blocks from City Hall
- Surrounded by numerous restaurants and retailers
- Two blocks from Suburban Station
- Abundant public parking garages within one block



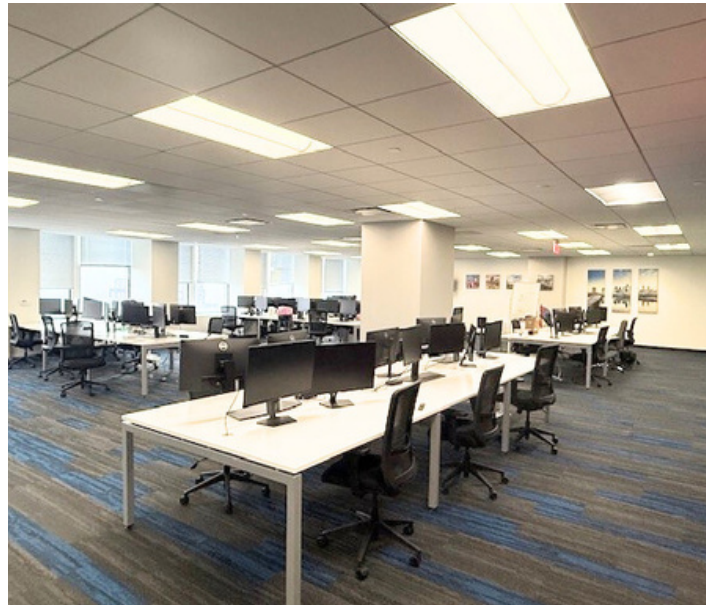
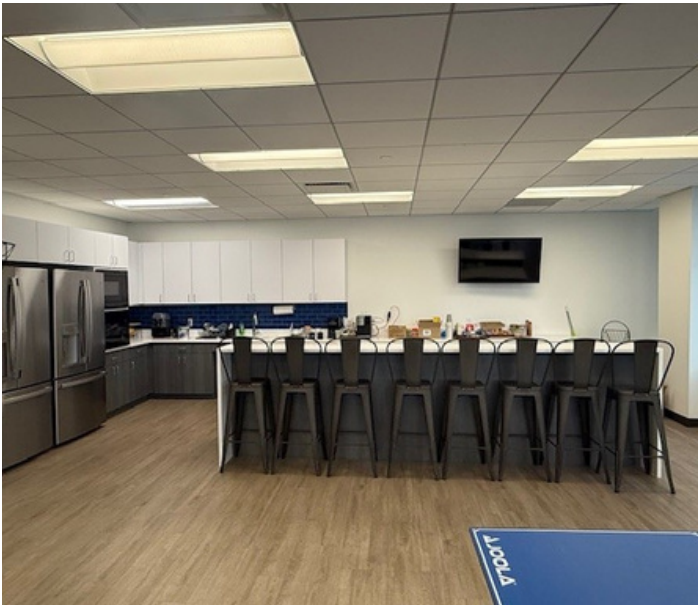
The foregoing information was furnished to us by sources which we deem to be reliable, but no warranty or representation is made as to the accuracy thereof. Subject to correction of errors, omissions, change of price, prior sale or withdrawal from market without notice.

FLOOR PLAN



The foregoing information was furnished to us by sources which we deem to be reliable, but no warranty or representation is made as to the accuracy thereof. Subject to correction of errors, omissions, change of price, prior sale or withdrawal from market without notice.

ADDITIONAL PHOTOS



The foregoing information was furnished to us by sources which we deem to be reliable, but no warranty or representation is made as to the accuracy thereof. Subject to correction of errors, omissions, change of price, prior sale or withdrawal from market without notice.