

HIGHLY VISIBLE CORPORATE HEADQUARTERS FOR SALE



501 EAST BLACK HORSE PIKE BLACKWOOD, NJ

Ryan Barikian
Vice President
856.383.5355
ryan.barikian@wolfcre.com

John Mozzillo
Executive Vice President
856.816.6973
john.mozzillo@wolfcre.com



The foregoing information was furnished to us by sources which we deem to be reliable, but no warranty or representation is made as to the accuracy thereof. Subject to correction of errors, omissions, change of price, prior sale or withdrawal from market without notice.



Wolf Commercial Real Estate
www.WolfCRE.com



PROPERTY DESCRIPTION

| | |
|-----------------------------------|--|
| Location: | 501 E. Black Horse Pike Blackwood, NJ 08012 |
| Size/SF Available: | +/- 25,261 SF |
| Property Size: | 2.22 acres |
| Sale Price: | Call for information |
| Zoning: | HC - Highway Commercial |
| County: | Gloucester |
| Year Built/ Renovated: | Built in 1988 & renovated in 2020 |
| Parking: | 88 parking spaces |

PROPERTY OPPORTUNITY

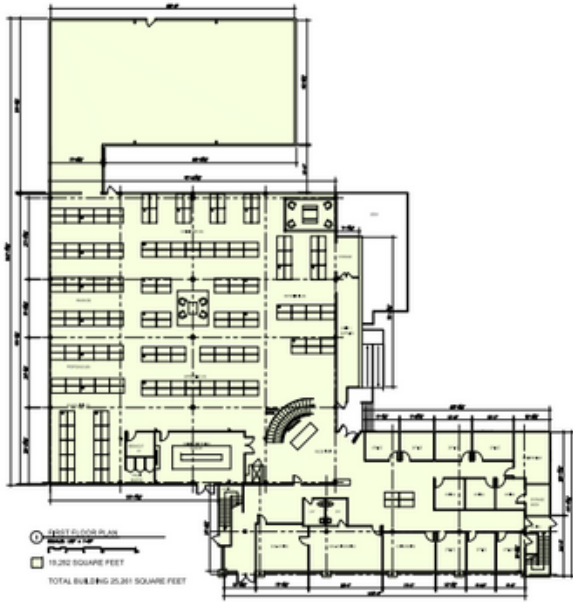
501 E. Black Horse Pike presents a premier opportunity to acquire a uniquely designed office or flex building, meticulously renovated to serve as an exceptional corporate headquarters. Featuring sleek glass walls, soaring ceilings, and contemporary high-end finishes, this property offers a sophisticated and dynamic workspace. Strategically positioned at the intersection of Black Horse Pike, Route 42, and the Atlantic City Expressway, it provides seamless connectivity to both Philadelphia and Atlantic City. This prime location is ideal for businesses looking to establish a commanding presence in both the Philadelphia and South Jersey markets.



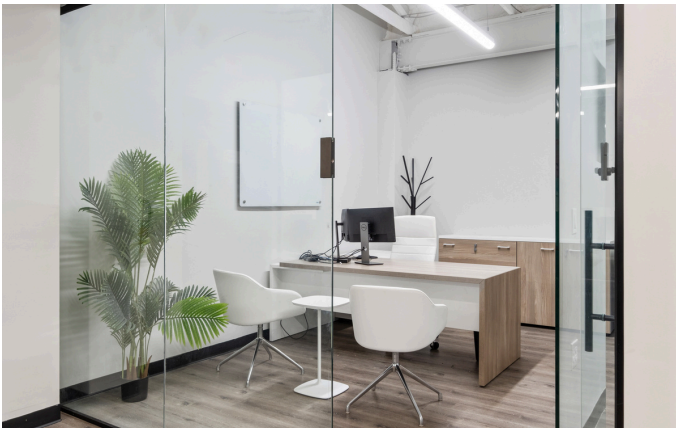
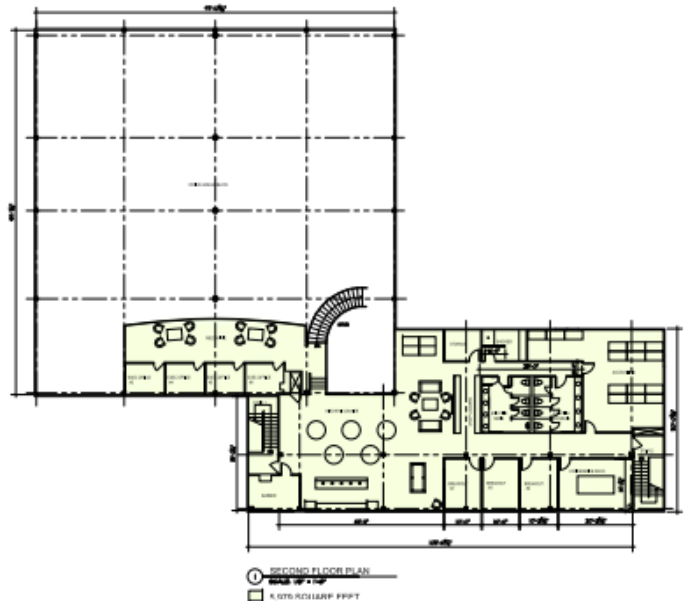
The foregoing information was furnished to us by sources which we deem to be reliable, but no warranty or representation is made as to the accuracy thereof. Subject to correction of errors, omissions, change of price, prior sale or withdrawal from market without notice.

FLOOR PLANS

First Floor



Second Floor



The foregoing information was furnished to us by sources which we deem to be reliable, but no warranty or representation is made as to the accuracy thereof. Subject to correction of errors, omissions, change of price, prior sale or withdrawal from market without notice.

LOCATION HIGHLIGHTS



501 E. Black Horse Pike is a 25,261 SF building situated on 2.22 acres at the intersection of Black Horse Pike (Route 168), Route 42, and the Atlantic City Expressway. The property is located in Washington Township, providing direct access to major roadways connecting South Jersey, Philadelphia, and Atlantic City. The traffic count at this intersection is 19,045 vehicles per day, ensuring consistent visibility and accessibility.



The foregoing information was furnished to us by sources which we deem to be reliable, but no warranty or representation is made as to the accuracy thereof. Subject to correction of errors, omissions, change of price, prior sale or withdrawal from market without notice.