

100 CARNIE BOULEVARD

Voorhees, NJ

Owned & Managed By
THOMAS PARK



PROMINENT MEDICAL/OFFICE SUITE FOR LEASE

SUITE A5

+/- 3,110 SF

PROPERTY FEATURES

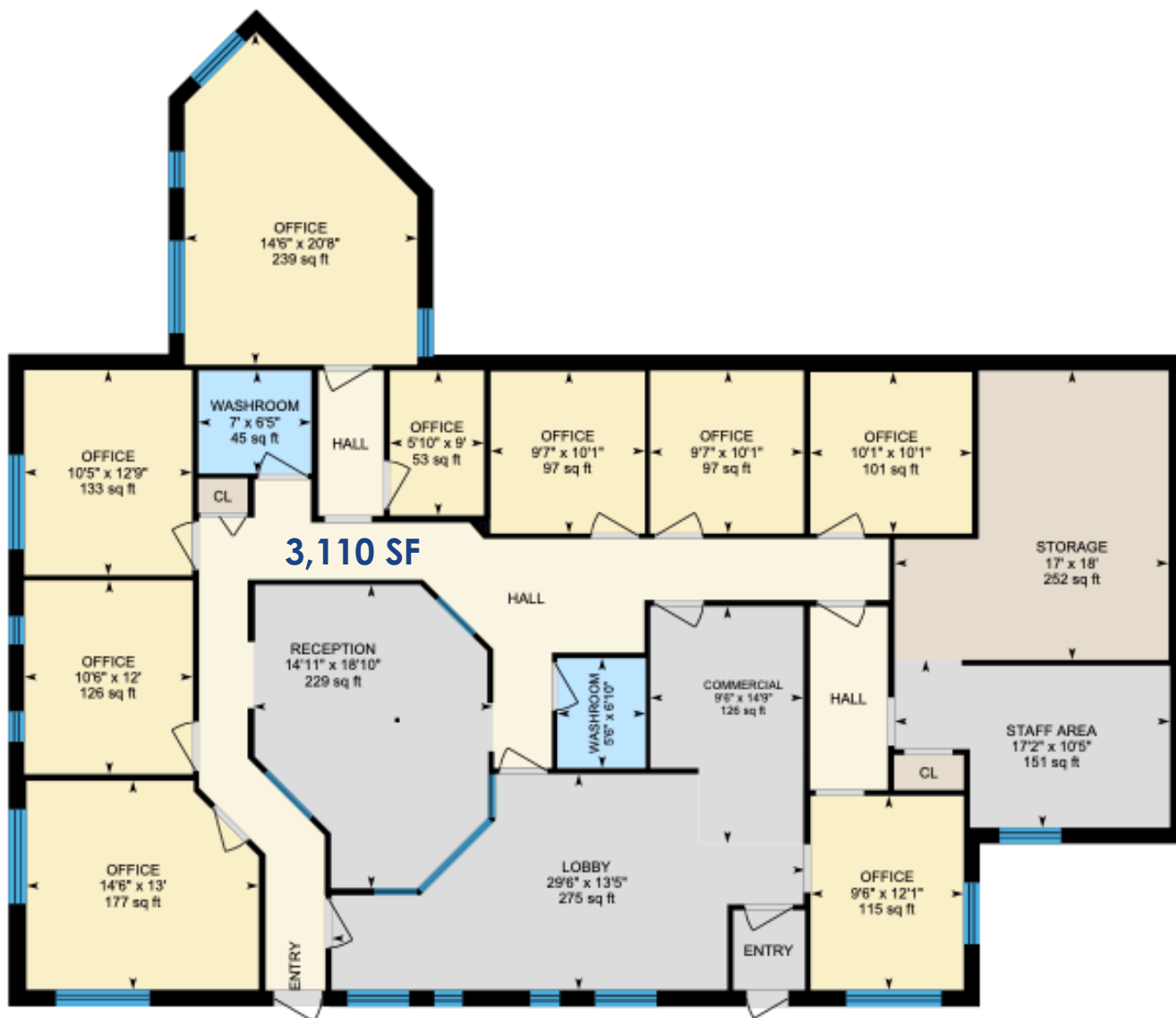
- Single story medical office building
- Ideal for medical or office users
- Owned & managed by reputable Thomas Park Investments
- Immediately available
- Join South Jersey Radiology

LOCATION HIGHLIGHTS

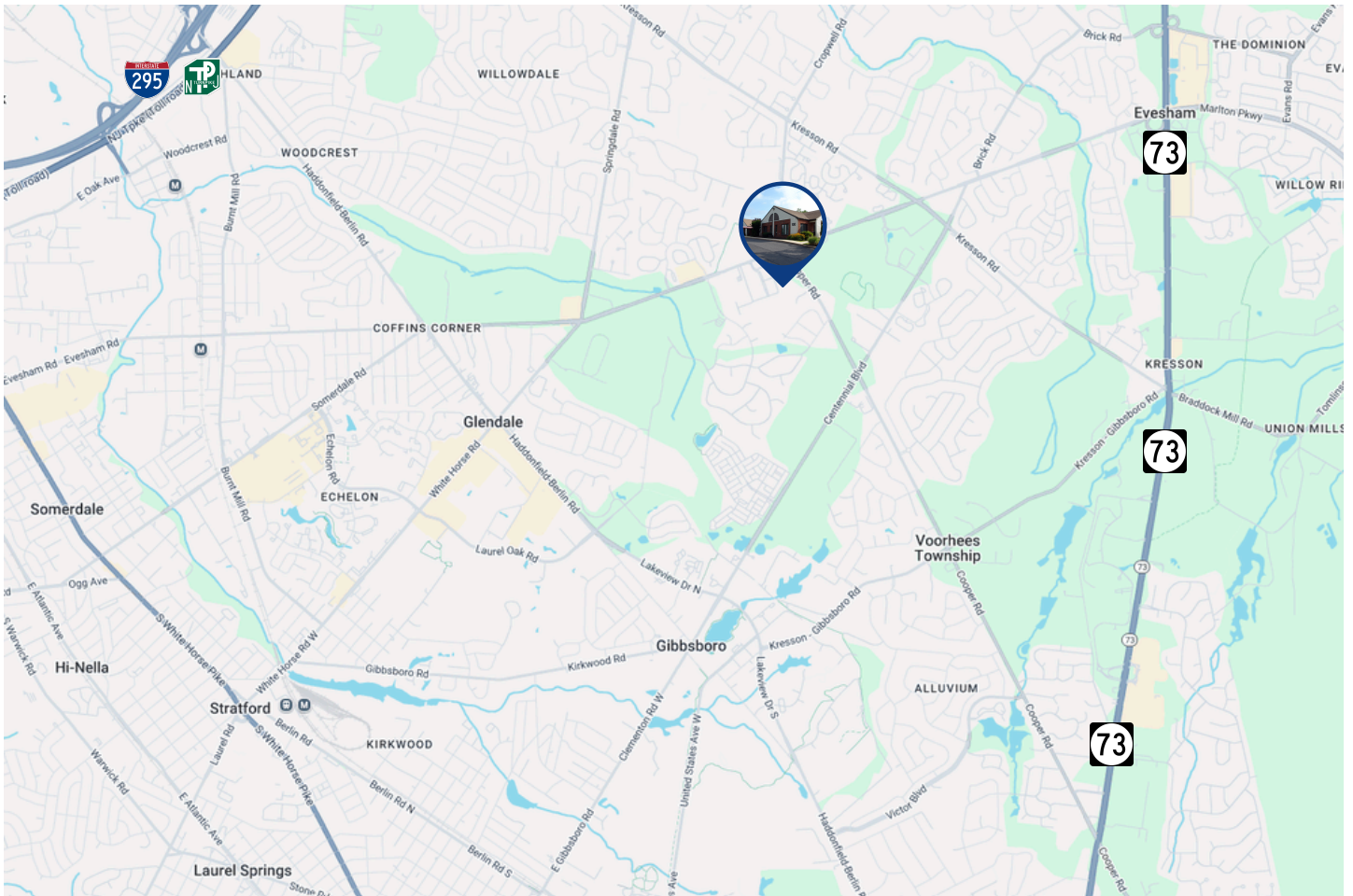
- Easy access to Routes 70, 73 & 561
- Surrounded by multiple healthcare systems and practices



FLOOR PLAN | 100 CARNIE BLVD | SUITE A5



LOCATION HIGHLIGHTS



MEDICAL

- Axia Women's Health Group
- Children's Hospital of Philadelphia
- Cooper Health
- Jefferson Hospital
- Penn Medicine
- South Jersey Radiology
- Summit Health
- Virtua Health

The foregoing information was furnished to us by sources which we deem to be reliable, but no warranty or representation is made as to the accuracy thereof. Subject to correction of errors, omissions, change of price, prior sale or withdrawal from market without notice.



www.WolfCRE.com

Erin Warwick
Executive Vice President
609.744.9964
erin.warwick@wolfcre.com

Evan Zweben
Executive Vice President
856.261.5548
evan.zweben@wolfcre.com

