

PROMINENT OFFICE CONDO SUITE FOR SALE OR LEASE



**2301 EAST EVESHAM ROAD
SUITE 307
VOORHEES, NJ**



Corey Hassman

Senior Advisor
856.857.6301

corey.hassman@wolfcre.com

Luke Majewski

Senior Advisor
856.857.6305

luke.majewski@wolfcre.com

The foregoing information was furnished to us by sources which we deem to be reliable, but no warranty or representation is made as to the accuracy thereof.
Subject to correction of errors, omissions, change of price, prior sale or withdrawal from market without notice.



Wolf Commercial Real Estate
www.WolfCRE.com



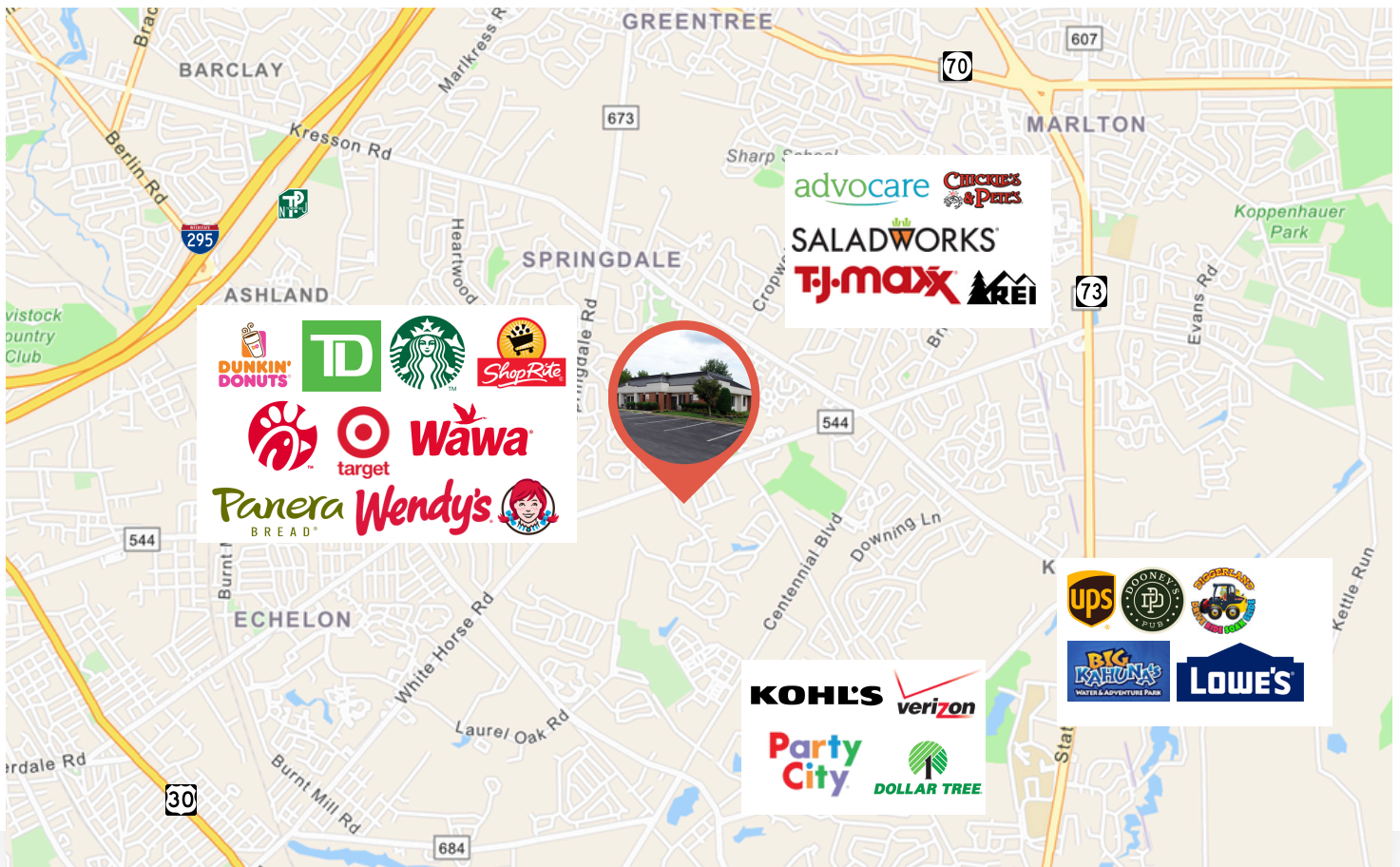
PROPERTY DESCRIPTION

Location:	2301 East Evesham Road Suite 307 Voorhees, NJ 08043
Size/SF Available:	+/- 1,000 SF
Sale Price:	\$146,500
Lease Price:	Call for Information
Signage:	Directory & Suite

PROPERTY AREA/HIGHLIGHTS

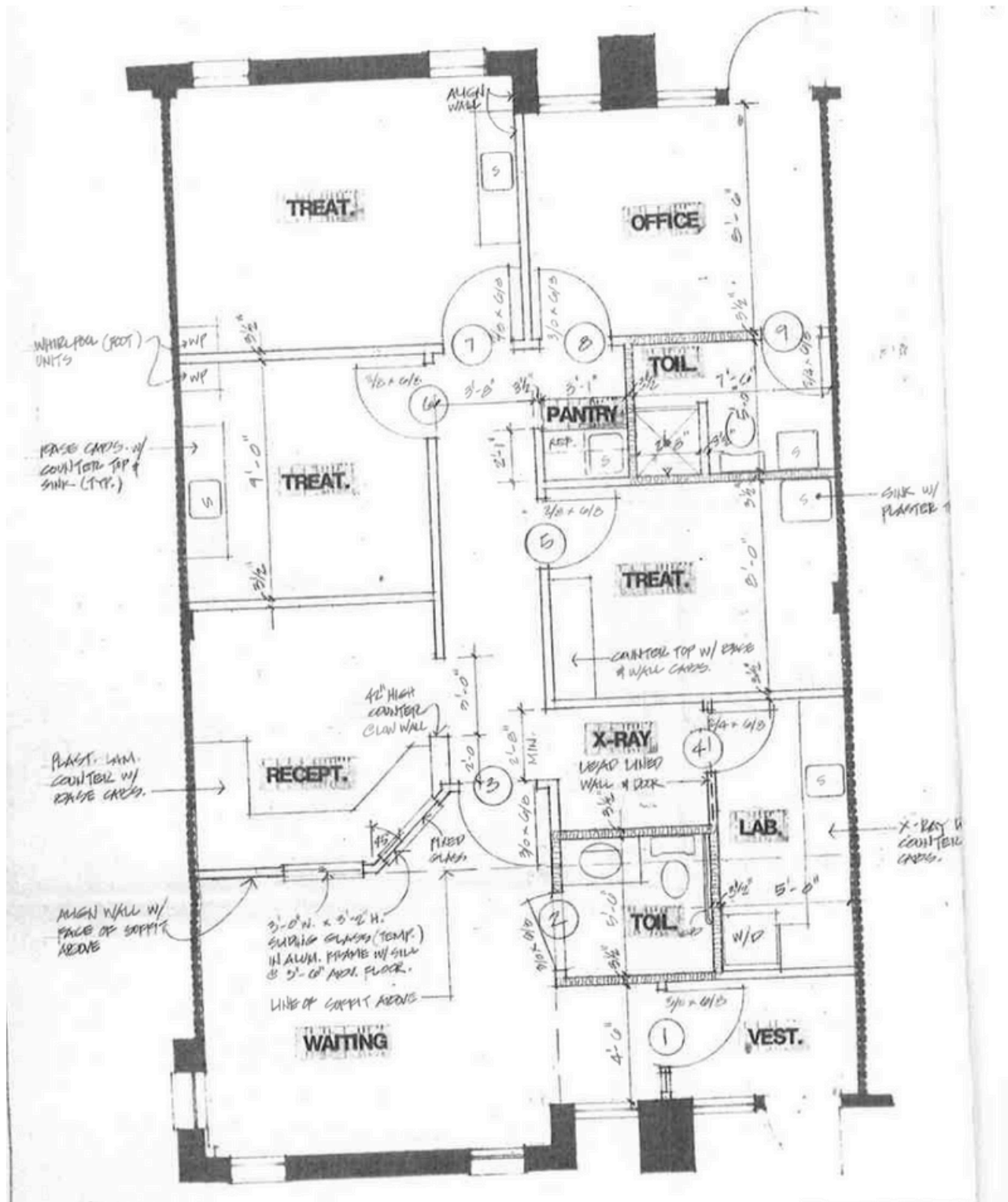
- Ideal for medical users
- Easy access with direct entry
- Central location to Cherry Hill & Voorhees, NJ
- Close proximity to Routes 73, 70, & White Horse Pike, NJ Turnpike & I-295
- Near various retailers such as Starbucks, Target, Shoprite, and Wawa

AERIAL MAP



The foregoing information was furnished to us by sources which we deem to be reliable, but no warranty or representation is made as to the accuracy thereof. Subject to correction of errors, omissions, change of price, prior sale or withdrawal from market without notice.

FLOOR MAP



The foregoing information was furnished to us by sources which we deem to be reliable, but no warranty or representation is made as to the accuracy thereof.
Subject to correction of errors, omissions, change of price, prior sale or withdrawal from market without notice.