

# PREMIER PROFESSIONAL OFFICE SUITE FOR LEASE

4 Executive Campus, Cherry Hill, NJ



**Ryan Barikian**  
Vice President  
856.383.5355  
[ryan.barikian@wolfcre.com](mailto:ryan.barikian@wolfcre.com)

The foregoing information was furnished to us by sources which we deem to be reliable, but no warranty or representation is made as to the accuracy thereof.  
Subject to correction of errors, omissions, change of price, prior sale or withdrawal from market without notice.



**Wolf Commercial Real Estate**  
**[www.WolfCRE.com](http://www.WolfCRE.com)**





### **BUILDING AMENITIES & INFORMATION**

- +/-30,000 SF office building
- Affordable mid-rise office building
- Ample parking
- Monument signage and tenant directory
- Gym on-site for tenant use



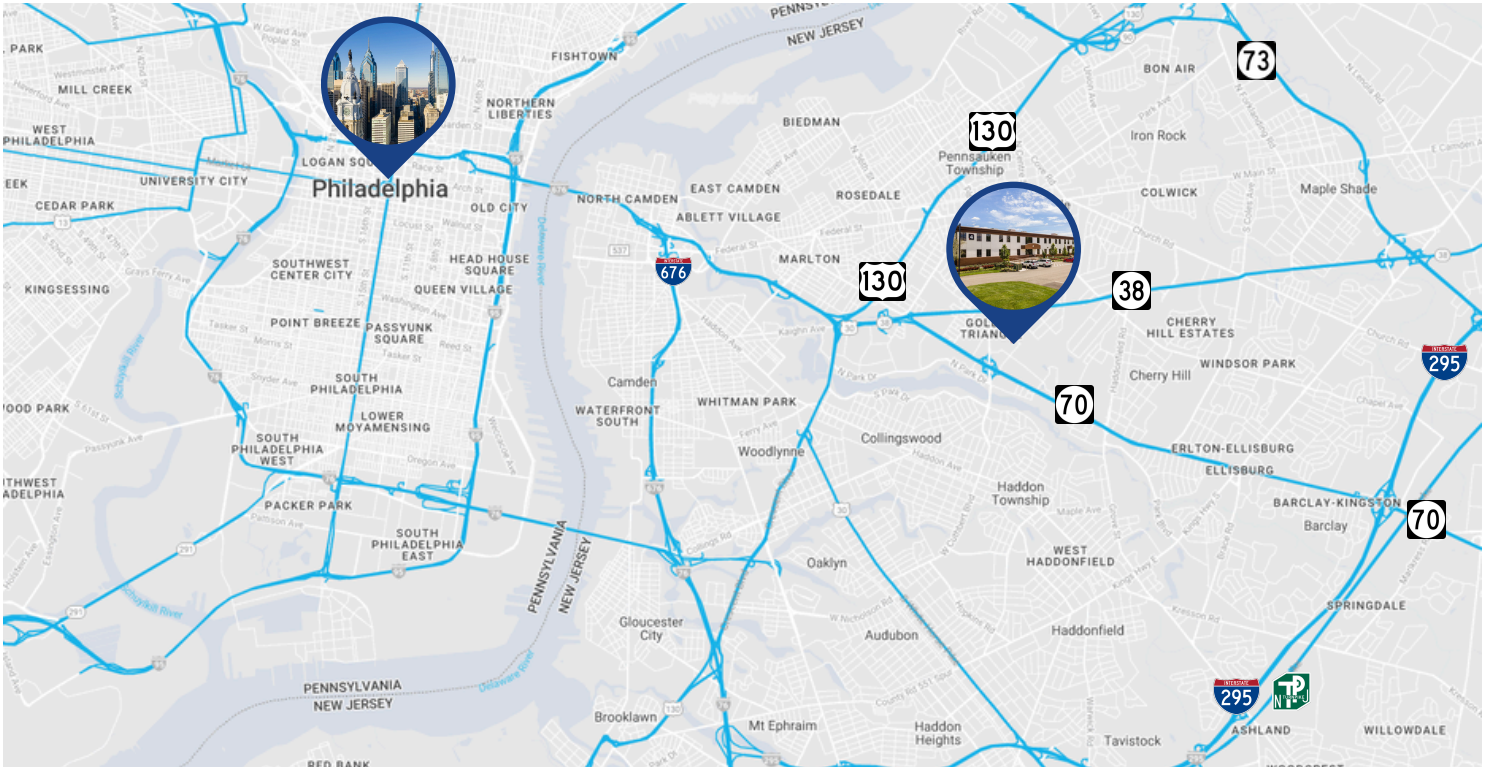
### **SUITE INFORMATION**

- **Suite 103: +/- 3,900 SF**
  - **\$20/SF Full-Service Lease including Janitorial**
  - Multiple private offices
  - Open bullpen area for cubicles
  - Conference room
  - Existing large kitchenette
  - Existing furniture can be utilized
- **Suite 101: +/- 1,000 SF**
  - **\$20/SF Full-Service Lease including Janitorial**

The foregoing information was furnished to us by sources which we deem to be reliable, but no warranty or representation is made as to the accuracy thereof. Subject to correction of errors, omissions, change of price, prior sale or withdrawal from market without notice.

## LOCATION HIGHLIGHTS

- Located immediately off Route 70 with easy access to Ben Franklin Bridge & Philadelphia
- Situated in Cherry Hill's 'Golden Triangle' between Routes 70 & 38
- Close to Garden State Pavilion's retail amenities



## LODGING

- Double Tree by Hilton
- Hampton Inn Philadelphia/Cherry Hill
- Days Inn & Suites

## RECREATION

- |              |                        |
|--------------|------------------------|
| • Burlington | • ShopRite             |
| • Boot Barn  | • Barnes & Noble       |
| • Staples    | • Trader Joe's         |
| • HomeGoods  | • Home Goods           |
| • UPS Store  | • DSW                  |
| • Ross       | • Nordstrom Rack       |
| • Home Depot | • Massage Envy         |
| • Costco     | • Orangetheory Fitness |

## BANKING & GAS

- |             |              |
|-------------|--------------|
| • TD Bank   | • Wawa       |
| • PNC Bank  | • Costco Gas |
| • WSFS Bank | • Lukoil     |

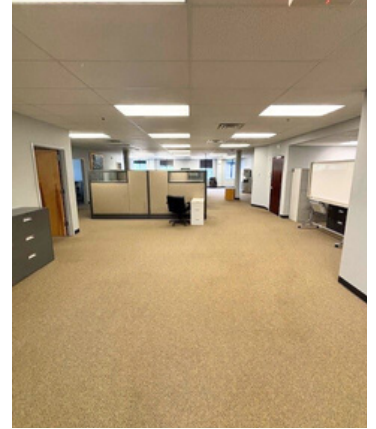
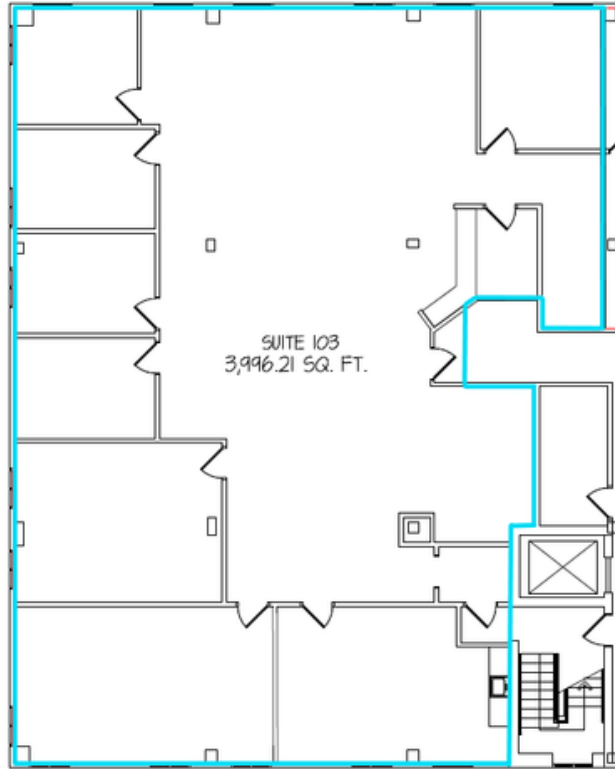
## DINING

- |                       |                          |
|-----------------------|--------------------------|
| • King of Pizza       | • Starbucks              |
| • Brio Italian Grille | • Dunkin Donuts          |
| • Primo Hoagies       | • Chick-fil-A            |
| • Jersey Mike's       | • Raising Cane's         |
| • Five Guys           | • Chipotle               |
| • Shake Shack         | • The Cheesecake Factory |
| • Whole Hog Cafe      | • Sugar Factory          |
| • LaScala's Birra     | • Crumbl                 |

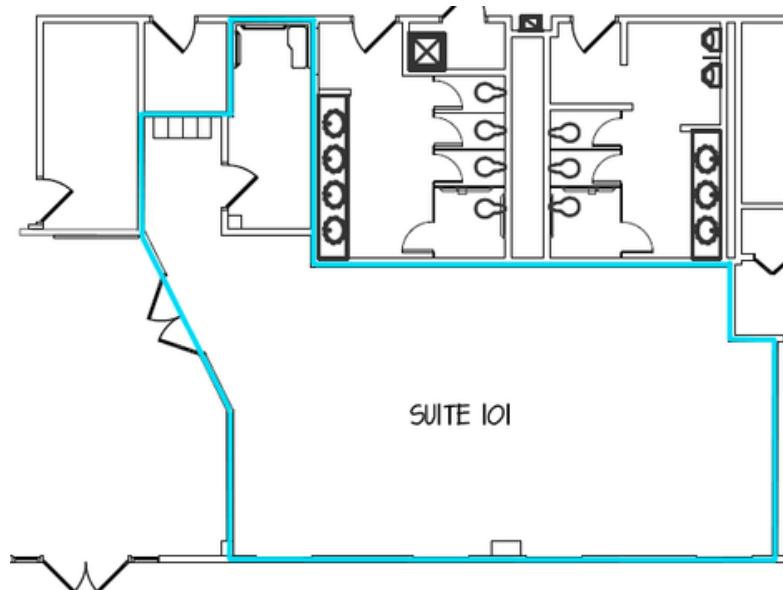
The foregoing information was furnished to us by sources which we deem to be reliable, but no warranty or representation is made as to the accuracy thereof. Subject to correction of errors, omissions, change of price, prior sale or withdrawal from market without notice.

## FLOOR PLAN

SUITE 103: +/- 3,900 SF



SUITE 101: +/- 1,000 SF



The foregoing information was furnished to us by sources which we deem to be reliable, but no warranty or representation is made as to the accuracy thereof. Subject to correction of errors, omissions, change of price, prior sale or withdrawal from market without notice.