

PROMINENT RETAIL/MIXED USE FOR SALE

IDEAL FOR
RETAIL OR
PROFESSIONAL
OFFICE USERS



BEVERLY RANCOCAS ROAD & SPRINGSIDE ROAD WESTAMPTON, NJ



Eric Flocco
Vice President
609.790.6940
eric.flocco@wolfcre.com

The foregoing information was furnished to us by sources which we deem to be reliable, but no warranty or representation is made as to the accuracy thereof. Subject to correction of errors, omissions, change of price, prior sale or withdrawal from market without notice.



Wolf Commercial Real Estate
www.WolfCRE.com



PROPERTY DESCRIPTION

Location: Beverly Rancocas Road & Springside Road
Westampton, NJ 08060

Size/SF Available: 1.3 & 1.7 acres
(can be combined)

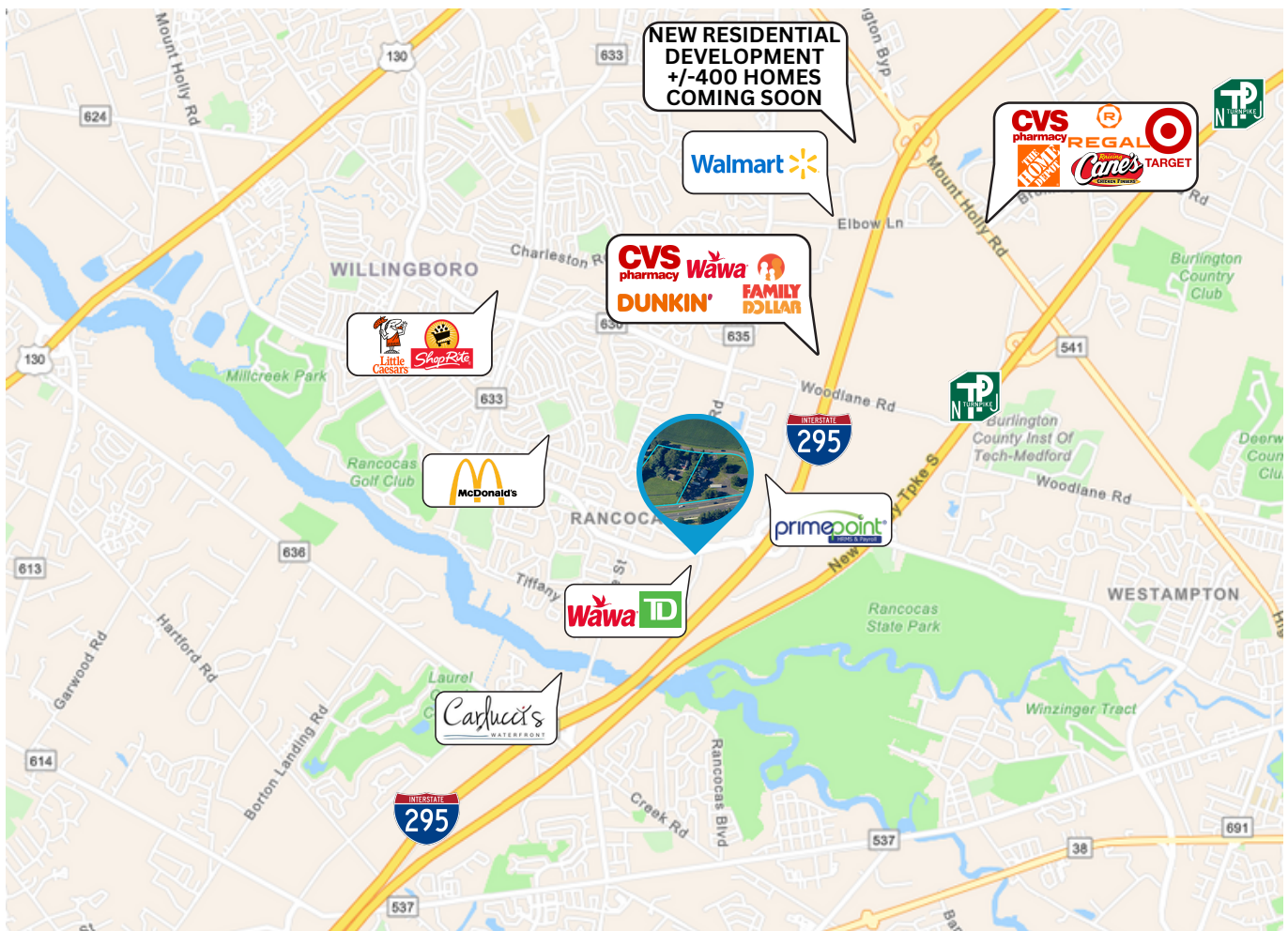
Sale Price: Call for information

Signage: Signage opportunity
signalized intersection

PROPERTY AREA/HIGHLIGHTS

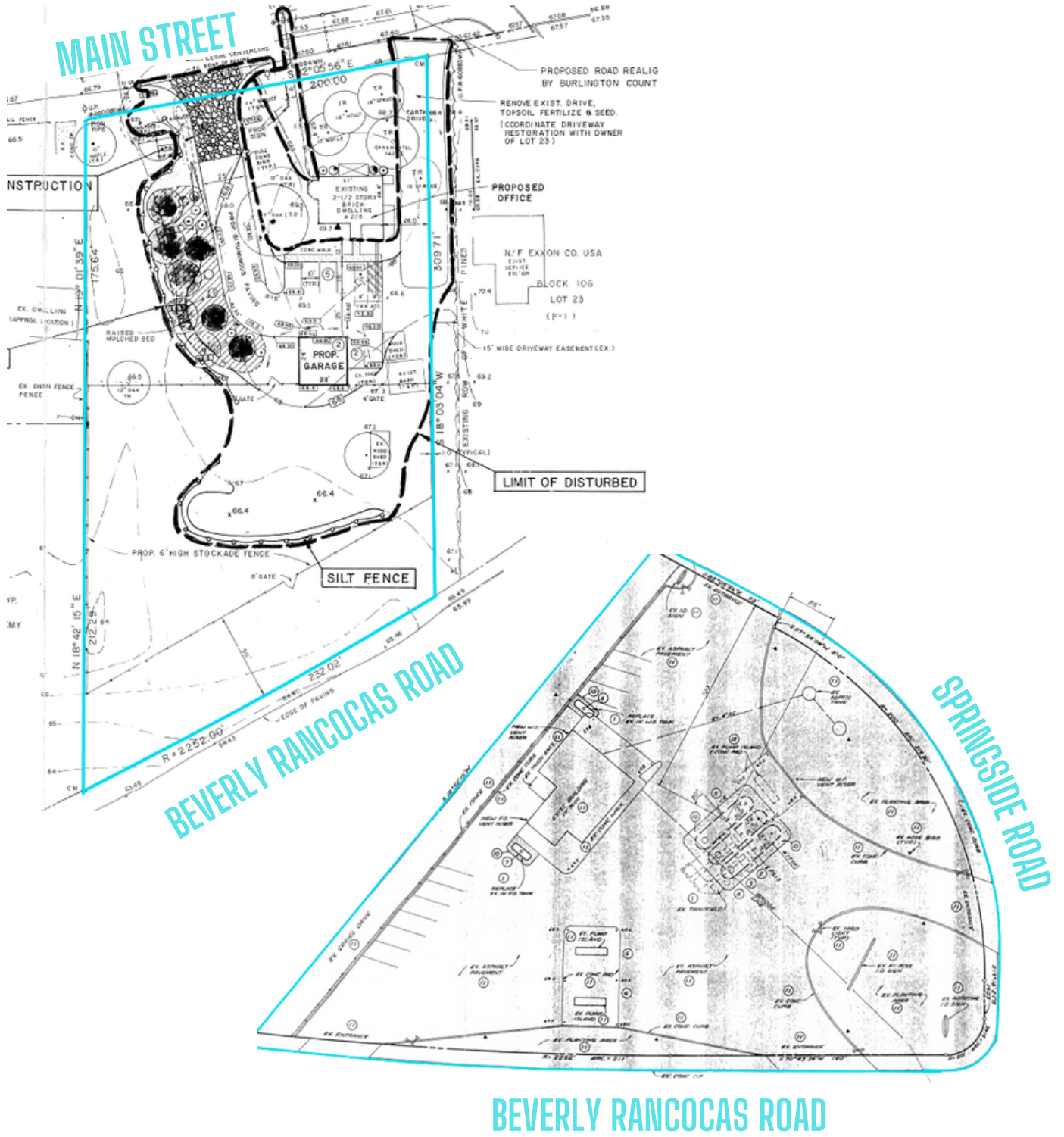
- Located at traffic signal with ingress/egress from two major roads
- Property includes professional office building
- Easy access to I-295 and NJ Turnpike
- Close proximity to various restaurants, retailers, residential communities and distribution centers
- New +/-400 homes - residential development nearby coming soon

RETAILER MAP



The foregoing information was furnished to us by sources which we deem to be reliable, but no warranty or representation is made as to the accuracy thereof. Subject to correction of errors, omissions, change of price, prior sale or withdrawal from market without notice.

SITE PLANS



The foregoing information was furnished to us by sources which we deem to be reliable, but no warranty or representation is made as to the accuracy thereof. Subject to correction of errors, omissions, change of price, prior sale or withdrawal from market without notice.