

PREMIER BANK PAD SITE & RESIDENTIAL DEVELOPMENT OPPORTUNITY



**2932 HADDONFIELD ROAD
PENNSAUKEN, NJ**

Eric Flocco
Vice President
609.790.6940
eric.flocco@wolfcre.com



The foregoing information was furnished to us by sources which we deem to be reliable, but no warranty or representation is made as to the accuracy thereof. Subject to correction of errors, omissions, change of price, prior sale or withdrawal from market without notice.



Wolf Commercial Real Estate
www.WolfCRE.com



PROPERTY DESCRIPTION

Location: 2932 Haddonfield Road.
Pennsauken, NJ 08110

Size/SF Available: +/- 2.252 SF on
+/- 2.78 acres

Sale Price: Call for information

Signage: Monument Signage

PROPERTY AREA/HIGHLIGHTS

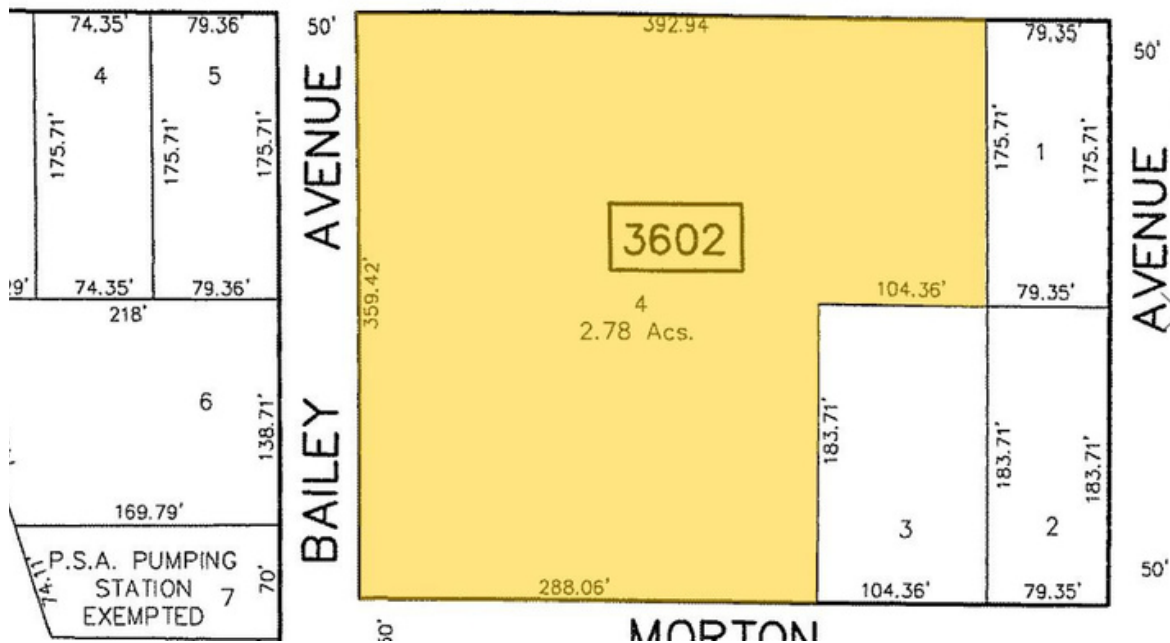
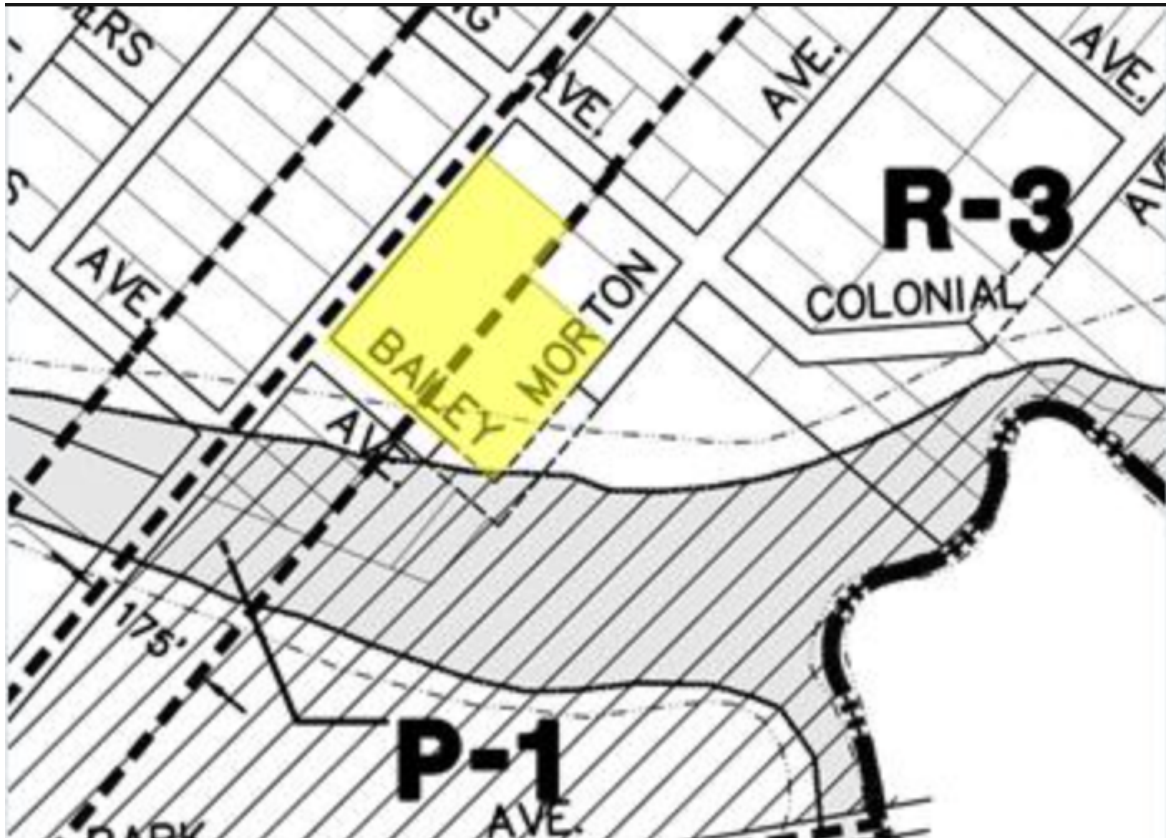
- Former Bank
- 393 feet of frontage along Haddonfield Road
- 4 min to Betsy Ross Bridge, 14 minutes to Center City Philadelphia
- 1/2 mile from US-130, NJ-90, NJ-73
- Numerous by-right zoning uses
 - P-1/Professional office district-front - 1.6 acres
 - R-3/Residential District - Back - 1.2 Acres

AERIAL MAP



The foregoing information was furnished to us by sources which we deem to be reliable, but no warranty or representation is made as to the accuracy thereof. Subject to correction of errors, omissions, change of price, prior sale or withdrawal from market without notice.

ZONING AND PARCEL MAP



The foregoing information was furnished to us by sources which we deem to be reliable, but no warranty or representation is made as to the accuracy thereof. Subject to correction of errors, omissions, change of price, prior sale or withdrawal from market without notice.