

PROMINENT OFFICE SUITE FOR LEASE

IDEAL FOR
PROFESSIONAL
OR MEDICAL
OFFICE USERS



**1913 GREENTREE ROAD
CHERRY HILL, NJ**



Brian Goren
Senior Advisor
215.799.6143
brian.goren@wolfcre.com

The foregoing information was furnished to us by sources which we deem to be reliable, but no warranty or representation is made as to the accuracy thereof. Subject to correction of errors, omissions, change of price, prior sale or withdrawal from market without notice.



Wolf Commercial Real Estate
www.WolfCRE.com



PROPERTY DESCRIPTION

Location: 1913 Greentree Road
Cherry Hill, NJ 08003

Size/SF: +/-1,100 SF - 2,200 SF
(Contiguous)

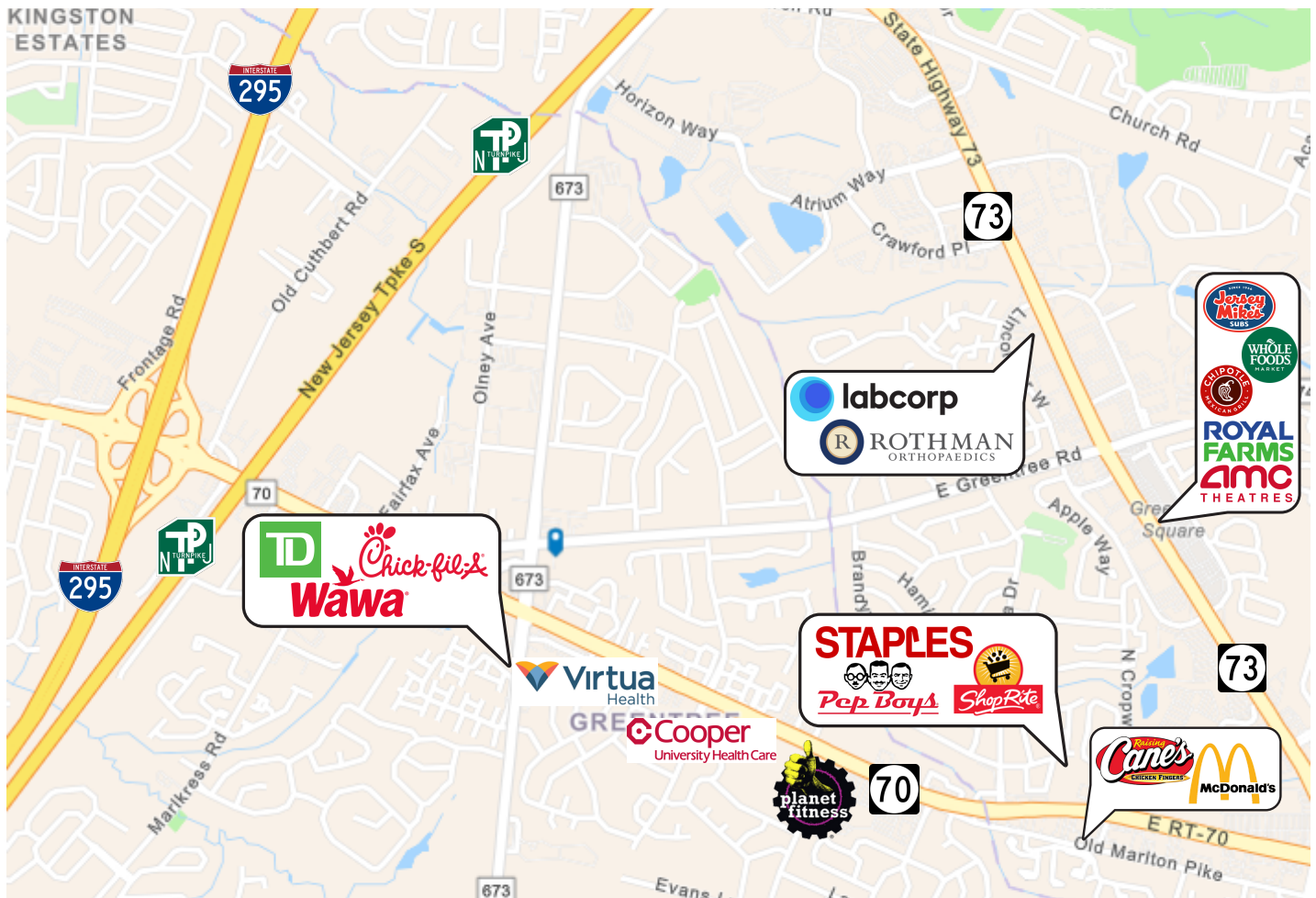
Lease Price: Call for information

Signage: Suite & Directory

PROPERTY AREA/HIGHLIGHTS

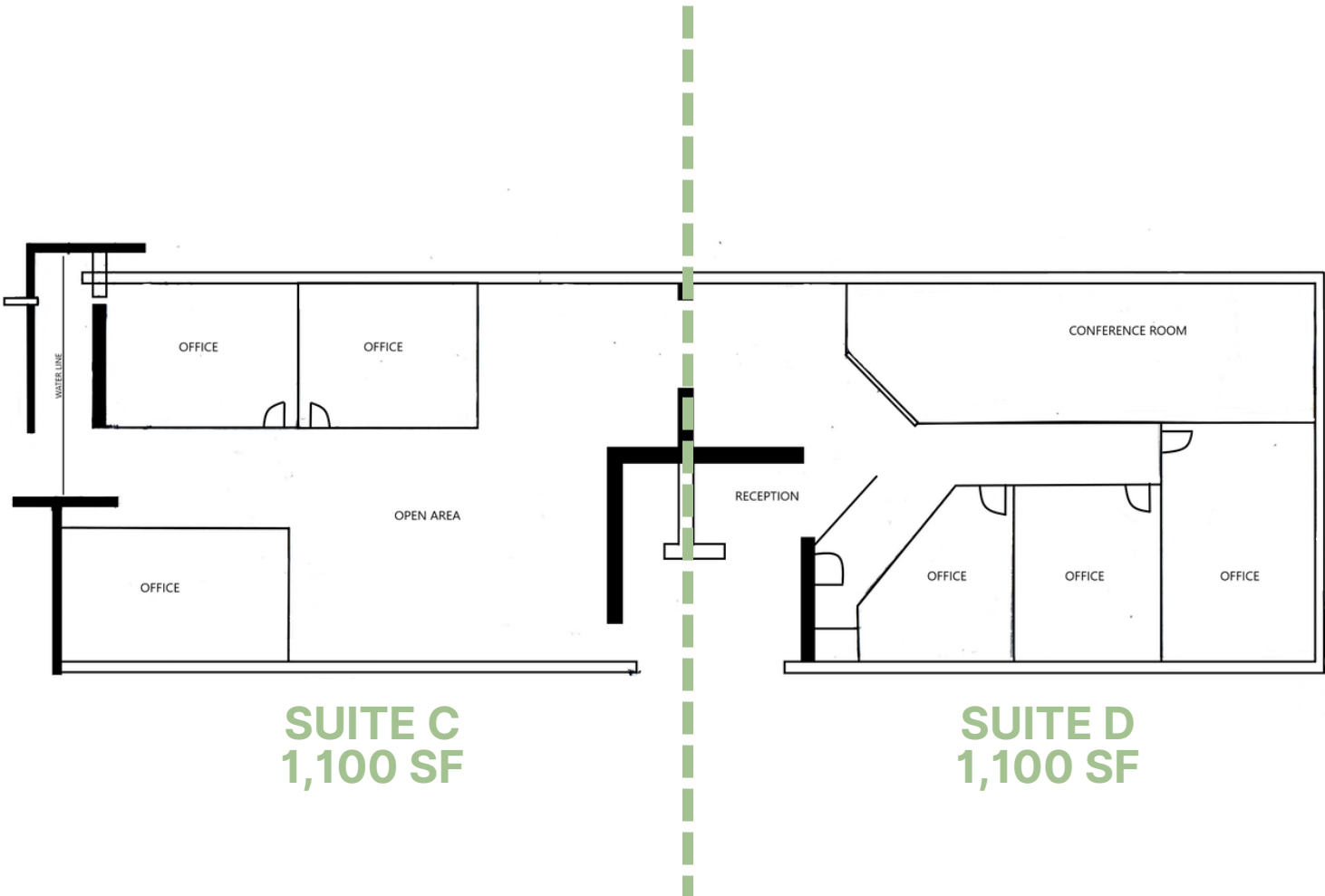
- Ideal for professional office, medical user
- Shared kitchenette & bathroom
- Ample parking
- Situated at the crossroads of heavily traveled Greentree Road and Springdale Road
- Easy access to Routes 70, 73, I-295 and NJ Turnpike (Exit 4)
- Close proximity to various restaurants, retailers, and healthcare networks!

AERIAL MAP



The foregoing information was furnished to us by sources which we deem to be reliable, but no warranty or representation is made as to the accuracy thereof. Subject to correction of errors, omissions, change of price, prior sale or withdrawal from market without notice.

FLOOR PLAN



**Suites C & D can be combined.
**Both suites share a kitchenette and bathroom in a vestibule. If preferred, Suite D can have bathroom fit-out.*

The foregoing information was furnished to us by sources which we deem to be reliable, but no warranty or representation is made as to the accuracy thereof. Subject to correction of errors, omissions, change of price, prior sale or withdrawal from market without notice.