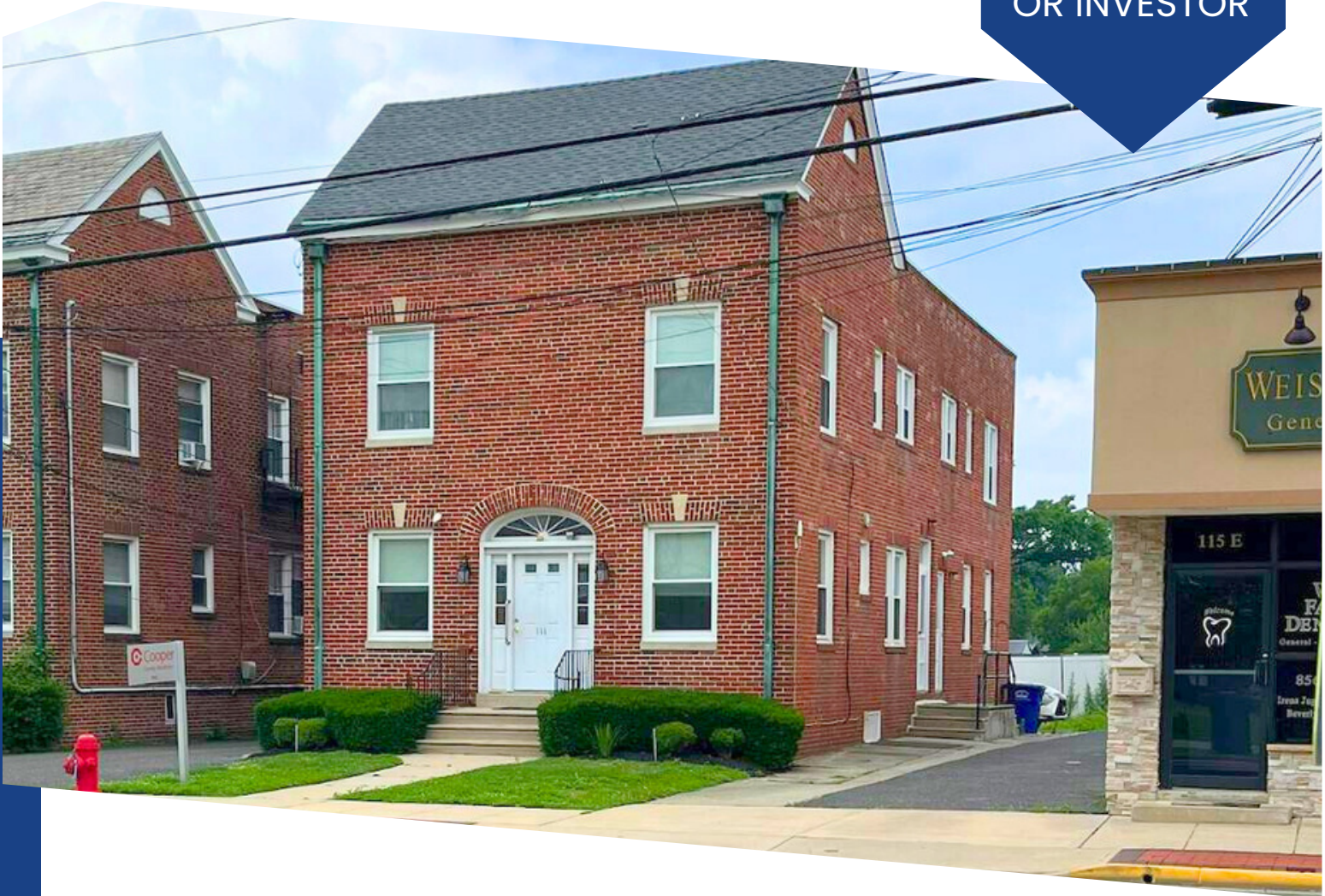


HIGHLY VISIBLE MEDICAL MIXED-USE BUILDING FOR SALE

IDEAL FOR
PROFESSIONAL
OR MEDICAL
OFFICE USERS
OR INVESTOR



**111 EAST MAIN STREET
MAPLE SHADE, NJ**

Corey Hassman
Senior Advisor
856.261.5812
corey.hassman@wolfcre.com



The foregoing information was furnished to us by sources which we deem to be reliable, but no warranty or representation is made as to the accuracy thereof.
Subject to correction of errors, omissions, change of price, prior sale or withdrawal from market without notice.



Wolf Commercial Real Estate
www.WolfCRE.com



PROPERTY DESCRIPTION

Location: 111 East Main Street
Maple Shade, NJ 08052

Size/SF: +/-2,763 SF

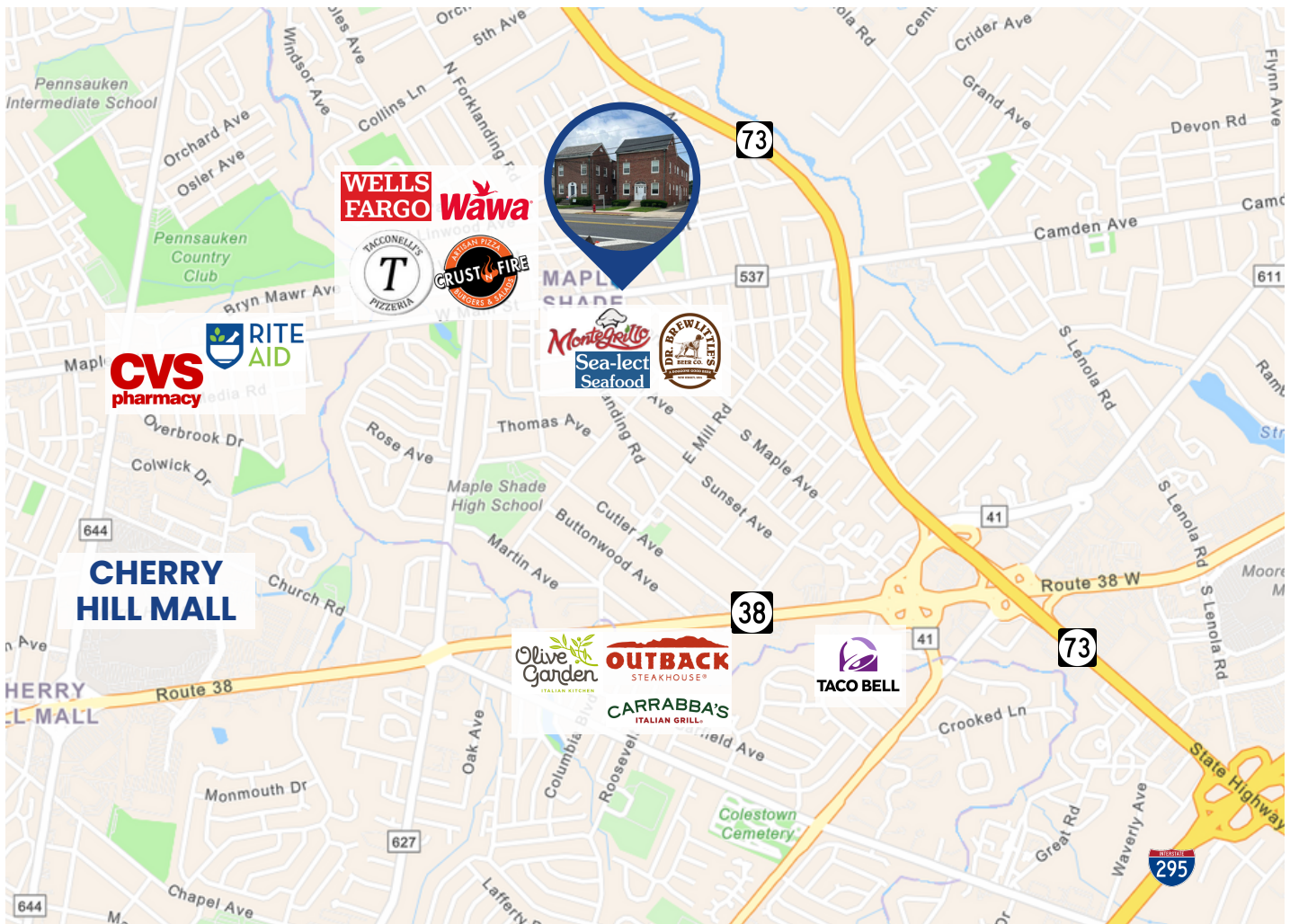
Sale Price: Call for information

Signage: Pylon Signage

PROPERTY AREA/HIGHLIGHTS

- Ideal for investor, professional or medical office users
- Fit-out medical office on first floor
- Two income producing apartments on second floor with private entrances
- Off-street parking (6 spaces)
- Four exam rooms with reception area
- Easy access to Routes 73 and 38
- Two miles from Cherry Hill Mall
- Near various retailers and restaurants
- Public transportation Bus 407 & 417 out front of neighboring building

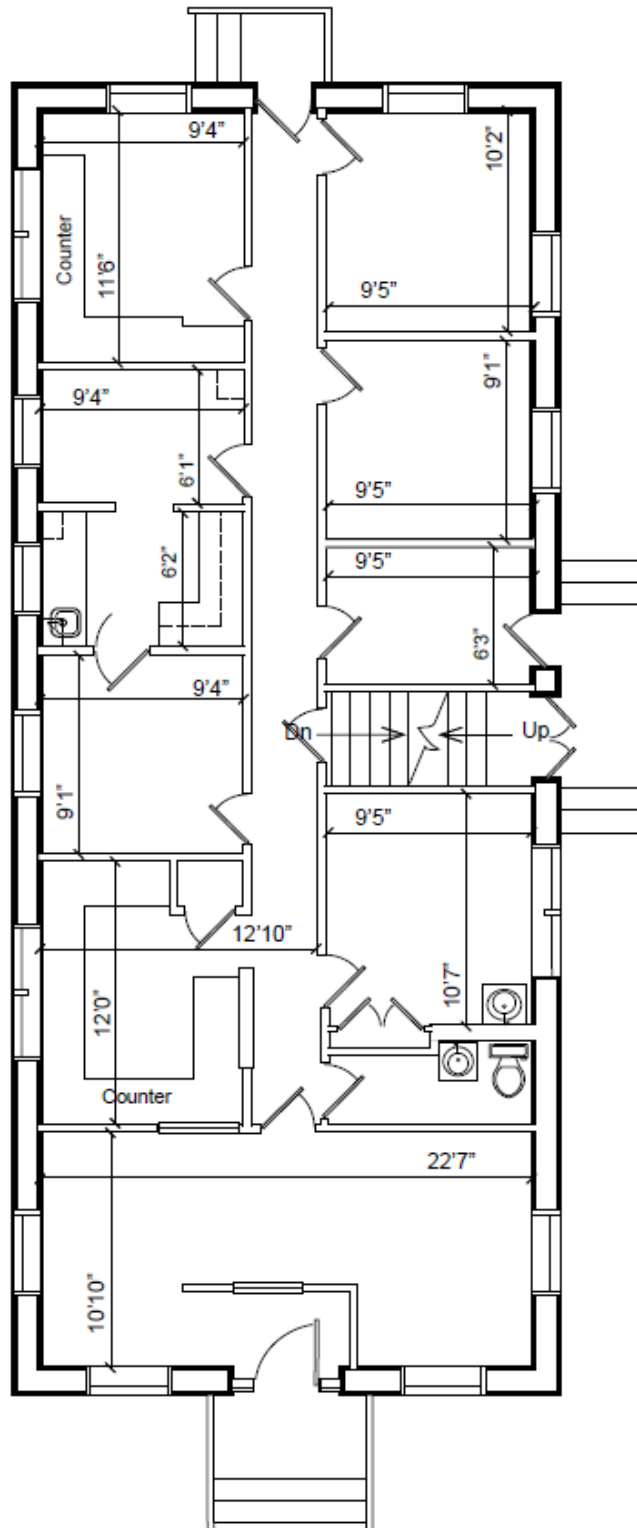
AERIAL MAP



The foregoing information was furnished to us by sources which we deem to be reliable, but no warranty or representation is made as to the accuracy thereof. Subject to correction of errors, omissions, change of price, prior sale or withdrawal from market without notice.

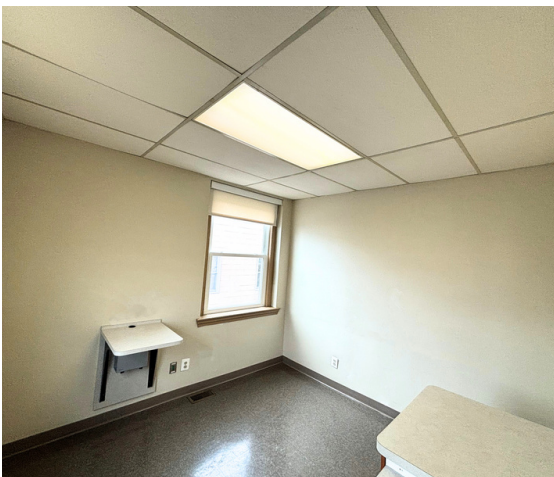
FLOOR PLAN

FIRST FLOOR
1,500 SF



The foregoing information was furnished to us by sources which we deem to be reliable, but no warranty or representation is made as to the accuracy thereof. Subject to correction of errors, omissions, change of price, prior sale or withdrawal from market without notice.

ADDITIONAL PHOTOS



The foregoing information was furnished to us by sources which we deem to be reliable, but no warranty or representation is made as to the accuracy thereof. Subject to correction of errors, omissions, change of price, prior sale or withdrawal from market without notice.