

PROMINENT PROFESSIONAL OFFICE SPACE FOR LEASE

LOCATED IN
DOWNTOWN
HADDONFIELD



41 S. HADDON AVE HADDONFIELD, NJ

Bethany Brown
Vice President
267.226.6602
bethany.brown@wolfcre.com



The foregoing information was furnished to us by sources which we deem to be reliable, but no warranty or representation is made as to the accuracy thereof. Subject to correction of errors, omissions, change of price, prior sale or withdrawal from market without notice.



Wolf Commercial Real Estate
www.WolfCRE.com



PROPERTY DESCRIPTION

- Location:** 41 S. Haddon Ave
Haddonfield, NJ 08033
- Size/SF:** Lower Level: +/-1,400 SF
First Floor: Up to 10,000 SF
(Divisible)
- Lease Price:** Call for information
- Signage:** Building signage

PROPERTY AREA/HIGHLIGHTS

- Ideal for professional office users
- Available for immediate occupancy
- Off-street parking
- Located in Downtown Haddonfield
- Easy access to I-295, Routes 70, 73 & 38
- Adjacent to PATCO High Speed Line
- Close proximity to the Post Office, restaurants and shops

About Downtown Haddonfield

Haddonfield is an award winning historic town, popular for its shopping and dining experience. The town boasts unique boutiques and a diverse array of restaurants, making it a premier destination in South Jersey. Conveniently located just 10 minutes from both the Ben Franklin and Walt Whitman bridges, with a PATCO station right in town, accessibility is at consumers and visitors fingertips.

There are over 200 shops and galleries that offer a delightful range of treasures. The culinary scene is award winning and the historic sites, provide timeless charm.

With accolades from prestigious publications like the Philly Magazine, New York Times and Courier Post, the town of Haddonfield takes pride in being voted Best Shopping.

Visitors and residents frequent Downtown Haddonfield providing it the premier location for various businesses to thrive in its environment.

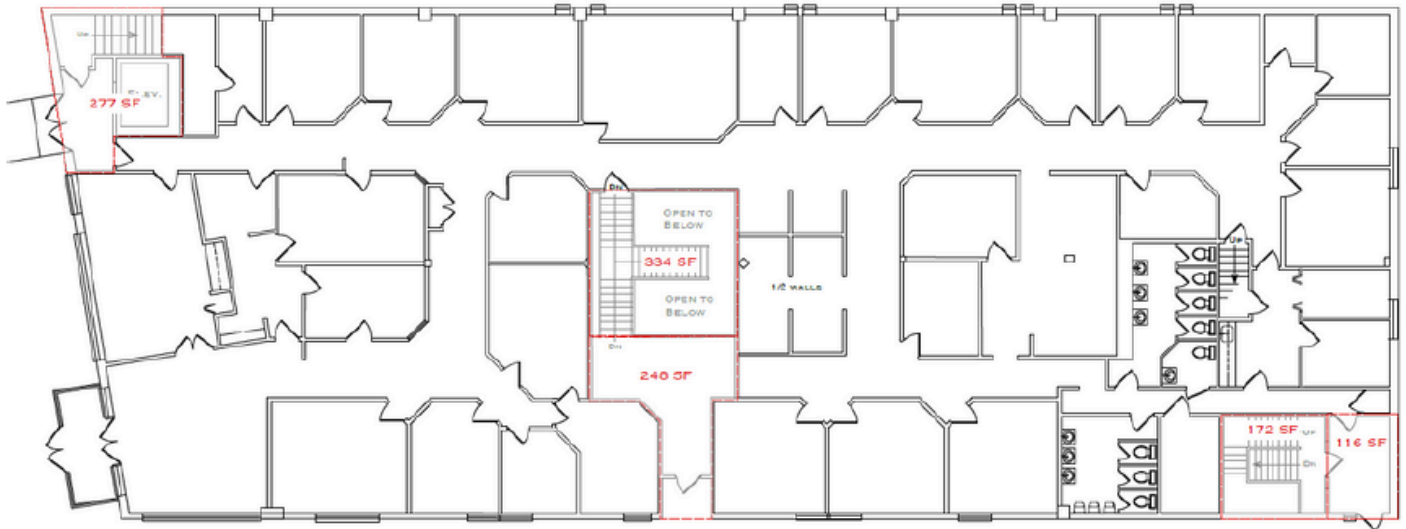


- Crust n Fire
- Starbucks
- Passariello's
- Saxby's
- The Bistro
- Kings Road Brewing Co.
- Crumb
- Cross Culture
- Acme
- CVS
- Just Bella
- Inkwood Book
- Haddonfield School of Music
- Ends of Earth Cigar Shoppe
- Duffy's Fine Chocolate

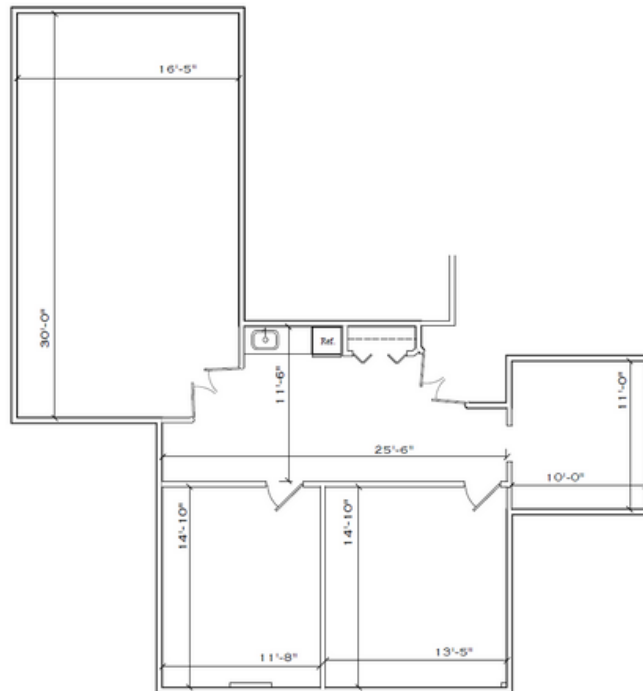
The foregoing information was furnished to us by sources which we deem to be reliable, but no warranty or representation is made as to the accuracy thereof. Subject to correction of errors, omissions, change of price, prior sale or withdrawal from market without notice.

FLOOR PLANS

First Floor +/-10,000 SF (Divisible)



Lower Level Suite 4 +/-1,400 SF



The foregoing information was furnished to us by sources which we deem to be reliable, but no warranty or representation is made as to the accuracy thereof. Subject to correction of errors, omissions, change of price, prior sale or withdrawal from market without notice.

ADDITIONAL PHOTOS



The foregoing information was furnished to us by sources which we deem to be reliable, but no warranty or representation is made as to the accuracy thereof. Subject to correction of errors, omissions, change of price, prior sale or withdrawal from market without notice.