

PROMINENT PROFESSIONAL SUITE FOR LEASE

IDEAL FOR
PROFESSIONAL
OR MEDICAL
OFFICE USE



**1916 OLD CUTHBERT ROAD
SUITE A1
CHERRY HILL, NJ**

Brian Goren
Senior Advisor
410.371.2208
brian.goren@wolfcre.com



The foregoing information was furnished to us by sources which we deem to be reliable, but no warranty or representation is made as to the accuracy thereof. Subject to correction of errors, omissions, change of price, prior sale or withdrawal from market without notice.



Wolf Commercial Real Estate
www.WolfCRE.com



PROPERTY DESCRIPTION

Location: 1916 Old Cuthbert Road
Suite A1
Cherry Hill, NJ 08034

Size/SF: +/-1,600 SF

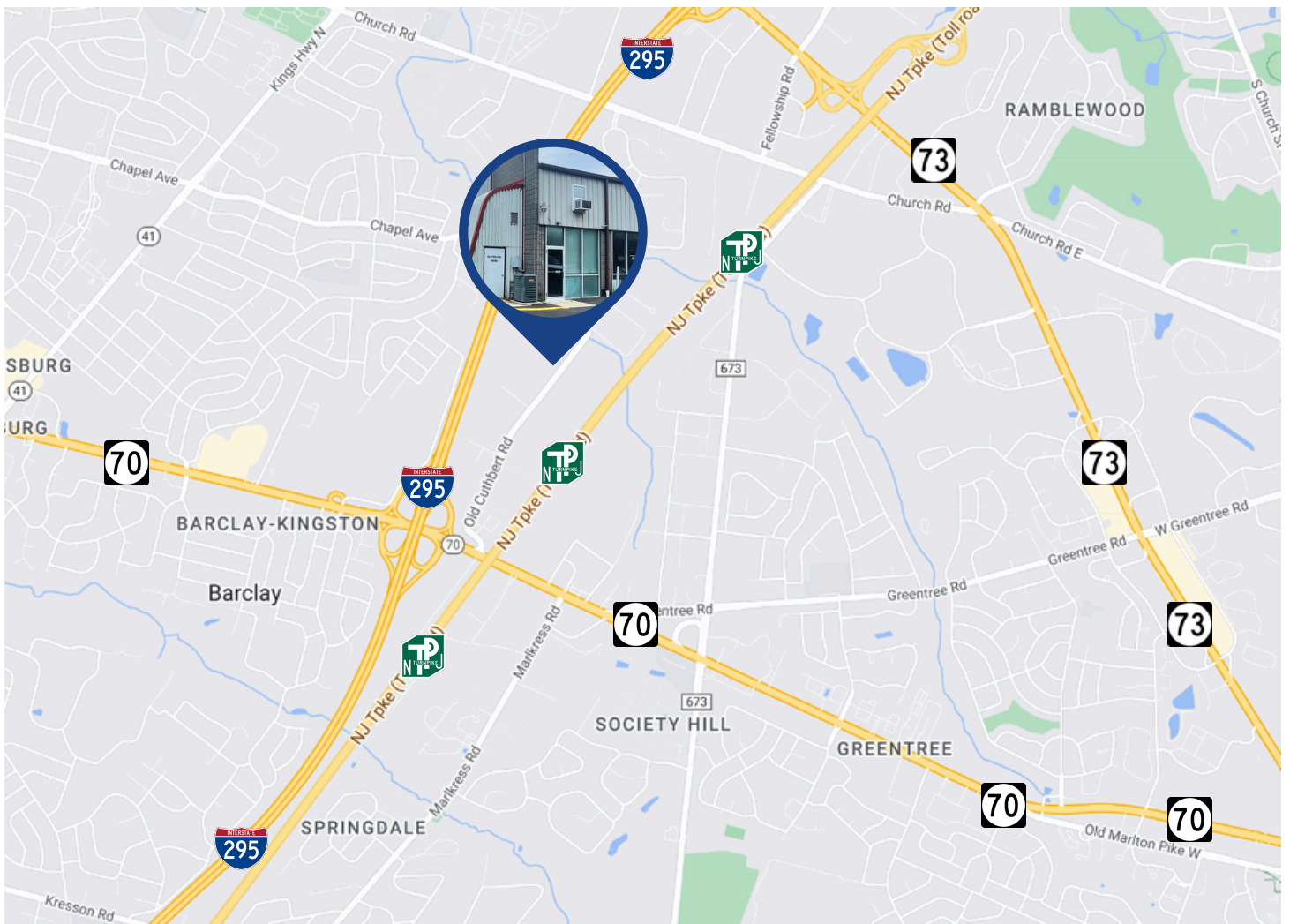
Lease Price: \$17.00 PSF

Signage: Directory & Suite Signage

PROPERTY AREA/HIGHLIGHTS

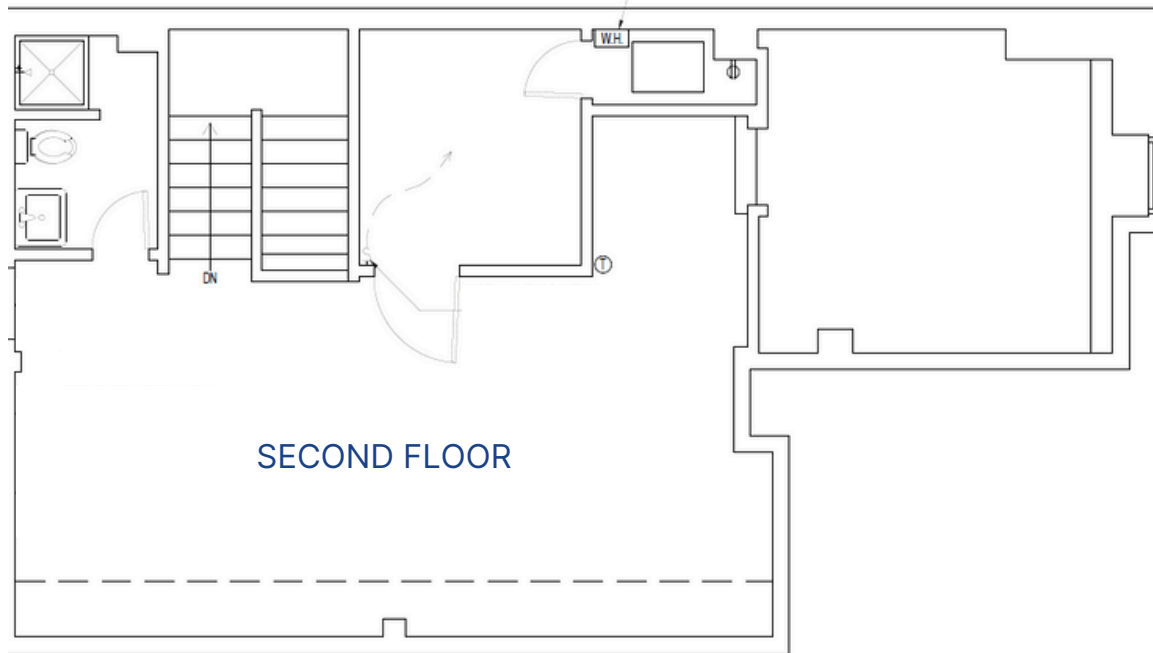
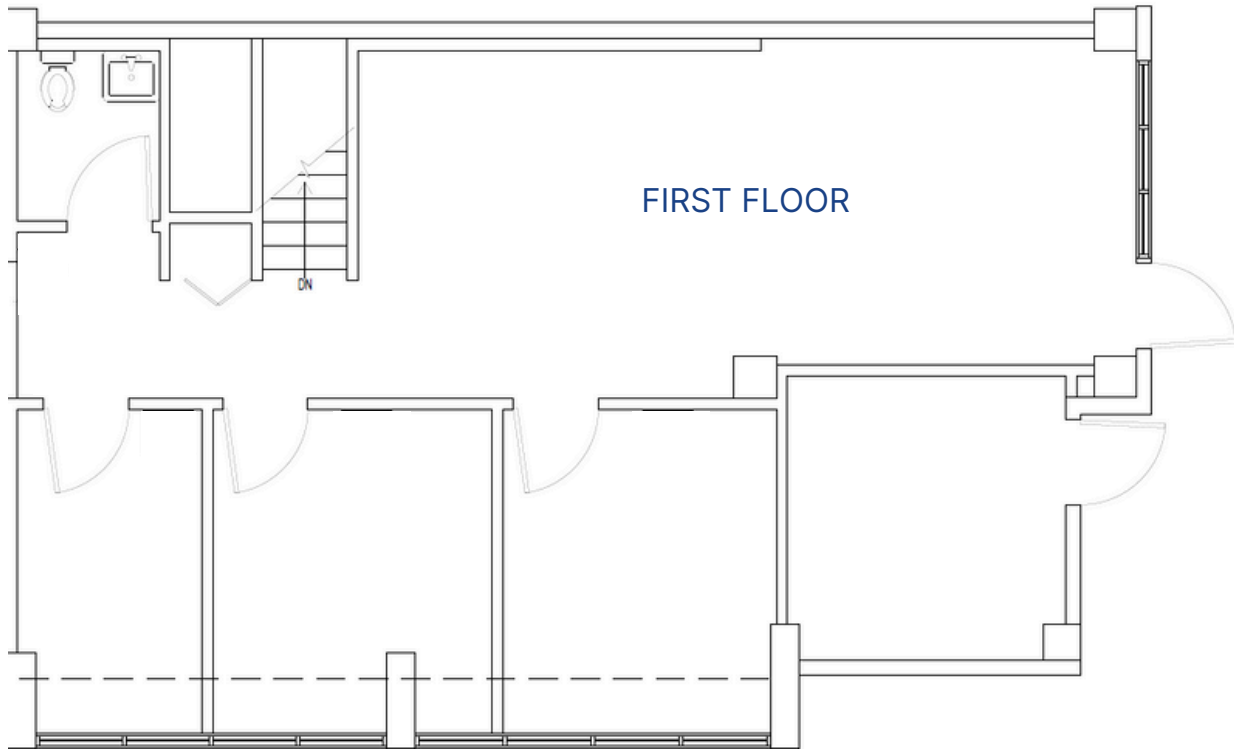
- Ideal for professional or medical office users
- Zoned Industrial
- Three (3) private offices
- Reception area
- Executive office
- Large conference room
- Recently renovated
- Easy access to Routes 70, 73, and 38, I-295, and NJ Turnpike

AERIAL MAP



The foregoing information was furnished to us by sources which we deem to be reliable, but no warranty or representation is made as to the accuracy thereof. Subject to correction of errors, omissions, change of price, prior sale or withdrawal from market without notice.

FLOOR PLAN



The foregoing information was furnished to us by sources which we deem to be reliable, but no warranty or representation is made as to the accuracy thereof. Subject to correction of errors, omissions, change of price, prior sale or withdrawal from market without notice.

ADDITIONAL PHOTOS



The foregoing information was furnished to us by sources which we deem to be reliable, but no warranty or representation is made as to the accuracy thereof. Subject to correction of errors, omissions, change of price, prior sale or withdrawal from market without notice.