

# PROMINENT PROFESSIONAL SUITE FOR LEASE

IDEAL FOR  
PROFESSIONAL  
OR MEDICAL  
OFFICE USE



**1916 OLD CUTHBERT ROAD  
SUITE A1  
CHERRY HILL, NJ**

**Brian Goren**  
Senior Advisor  
410.371.2208  
brian.goren@wolfcre.com



The foregoing information was furnished to us by sources which we deem to be reliable, but no warranty or representation is made as to the accuracy thereof. Subject to correction of errors, omissions, change of price, prior sale or withdrawal from market without notice.



**Wolf Commercial Real Estate**  
**www.WolfCRE.com**



## PROPERTY DESCRIPTION

**Location:** 1916 Old Cuthbert Road  
Suite A1  
Cherry Hill, NJ 08034

**Size/SF:** +/-1,600 SF

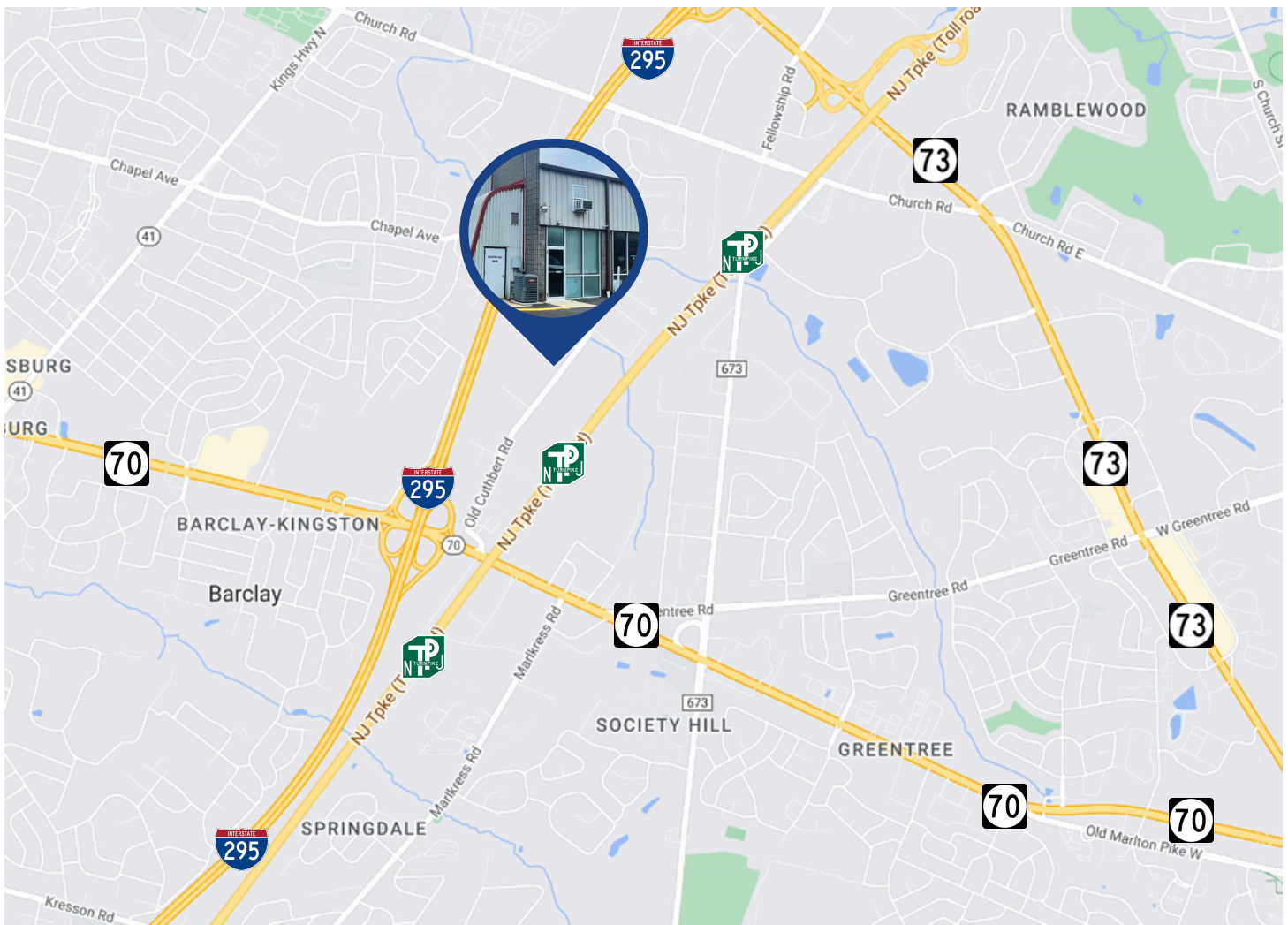
**Lease Price:** \$17.00 PSF

**Signage:** Directory & Suite Signage

## PROPERTY AREA/HIGHLIGHTS

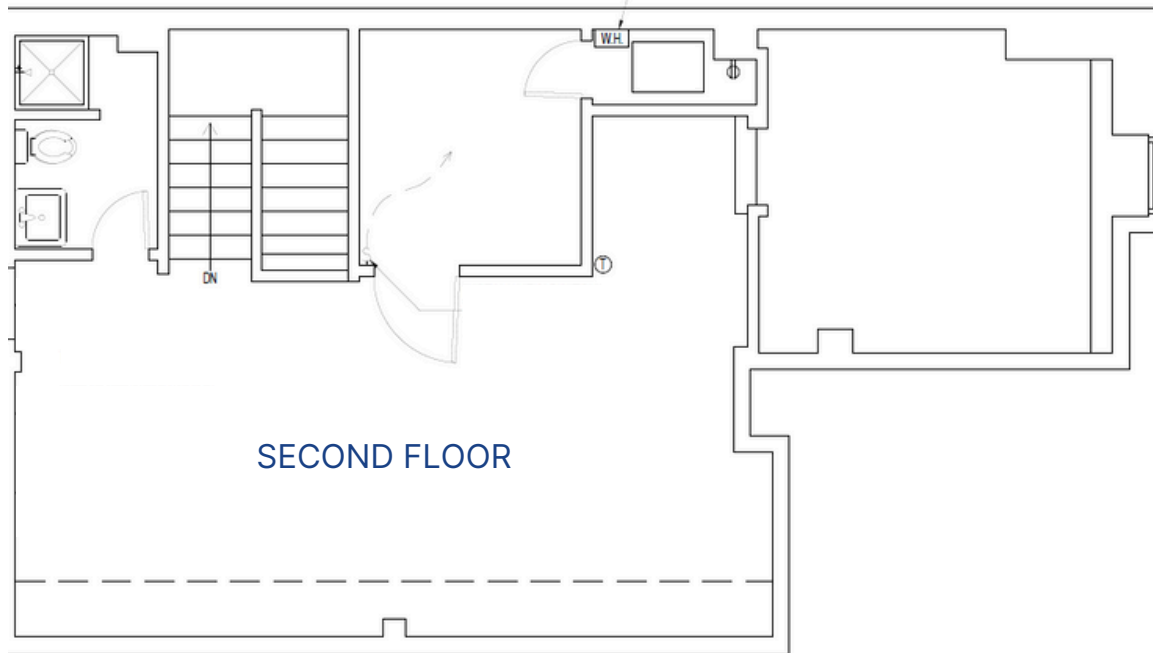
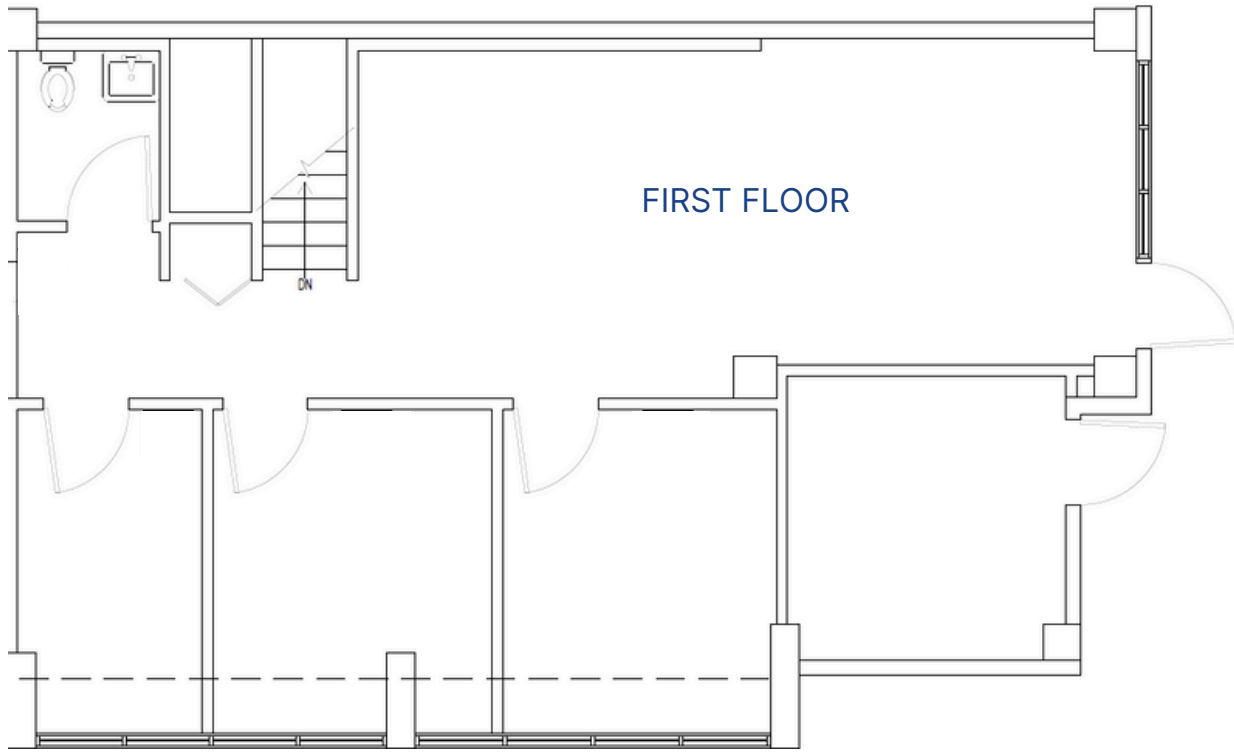
- Ideal for professional or medical office users
- Zoned Industrial
- Three (3) private offices
- Reception area
- Executive office
- Large conference room
- Recently renovated
- Easy access to Routes 70, 73, and 38, I-295, and NJ Turnpike

## AERIAL MAP



The foregoing information was furnished to us by sources which we deem to be reliable, but no warranty or representation is made as to the accuracy thereof. Subject to correction of errors, omissions, change of price, prior sale or withdrawal from market without notice.

**FLOOR PLAN**



The foregoing information was furnished to us by sources which we deem to be reliable, but no warranty or representation is made as to the accuracy thereof. Subject to correction of errors, omissions, change of price, prior sale or withdrawal from market without notice.

**ADDITIONAL PHOTOS**



The foregoing information was furnished to us by sources which we deem to be reliable, but no warranty or representation is made as to the accuracy thereof. Subject to correction of errors, omissions, change of price, prior sale or withdrawal from market without notice.