

PROMINENT MIXED USE SPACE FOR LEASE

IDEAL FOR
RETAIL OR
OFFICE
USERS



**1719 CHESTNUT STREET
PHILADELPHIA, PA**



John Mazurie
Senior Advisor
609.412.8690
john.mazurie@wolfcre.com

Joe Fox
Senior Advisor
484.772.5889
joseph.fox@wolfcre.com

The foregoing information was furnished to us by sources which we deem to be reliable, but no warranty or representation is made as to the accuracy thereof. Subject to correction of errors, omissions, change of price, prior sale or withdrawal from market without notice.



Wolf Commercial Real Estate
www.WolfCRE.com



PROPERTY DESCRIPTION

Location: 1719 Chestnut Street
Philadelphia, PA 19103

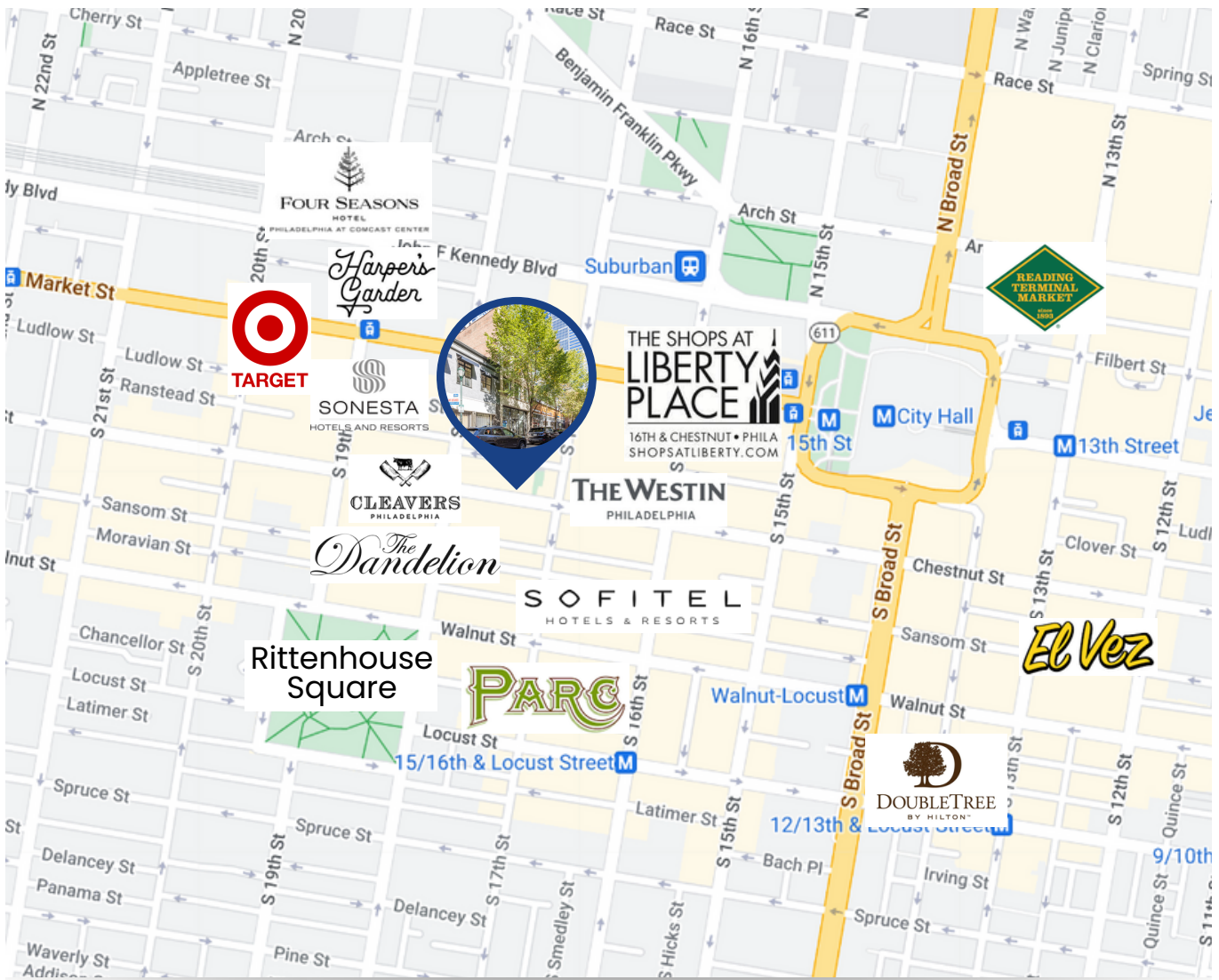
Size/SF: +/- 3,300 SF

Lease Price: Call for information

PROPERTY AREA/HIGHLIGHTS

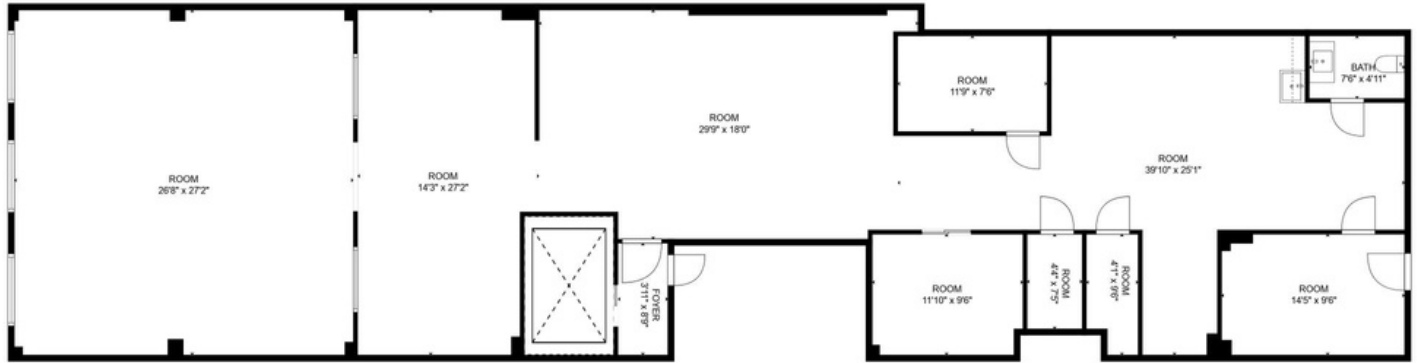
- Ideal for retail or office users
- Open floor layout with 3 private offices, and a conference room
- Elevator access
- Floor to ceiling windows at the front of the space
- Easily accessible to PATCO station at 16th & Locust
- Situated near various prominent retailers, hotels and restaurants

AERIAL MAP



The foregoing information was furnished to us by sources which we deem to be reliable, but no warranty or representation is made as to the accuracy thereof. Subject to correction of errors, omissions, change of price, prior sale or withdrawal from market without notice.

FLOOR PLAN



ADDITIONAL PHOTOS



The foregoing information was furnished to us by sources which we deem to be reliable, but no warranty or representation is made as to the accuracy thereof. Subject to correction of errors, omissions, change of price, prior sale or withdrawal from market without notice.