

# HIGHLY VISIBLE SUITE AVAILABLE FOR LEASE

FULLY  
FIT-OUT  
MEDICAL/  
PROFESSIONAL  
SUITE



**1101 WHITE HORSE ROAD  
SUITE 110  
VOORHEES, NJ**

**John Mozzillo**  
Executive Vice President  
856.816.6973  
[john.mozzillo@wolfcre.com](mailto:john.mozzillo@wolfcre.com)

**Jason Wolf**  
Managing Principal  
215.588.8800  
[jason.wolf@wolfcre.com](mailto:jason.wolf@wolfcre.com)



The foregoing information was furnished to us by sources which we deem to be reliable, but no warranty or representation is made as to the accuracy thereof.  
Subject to correction of errors, omissions, change of price, prior sale or withdrawal from market without notice.



**Wolf Commercial Real Estate**  
**[www.WolfCRE.com](http://www.WolfCRE.com)**



## PROPERTY DESCRIPTION

**Location:** 1101 White Horse Road  
Voorhees, NJ 08043

**Size/SF:** +/-6,127 SF

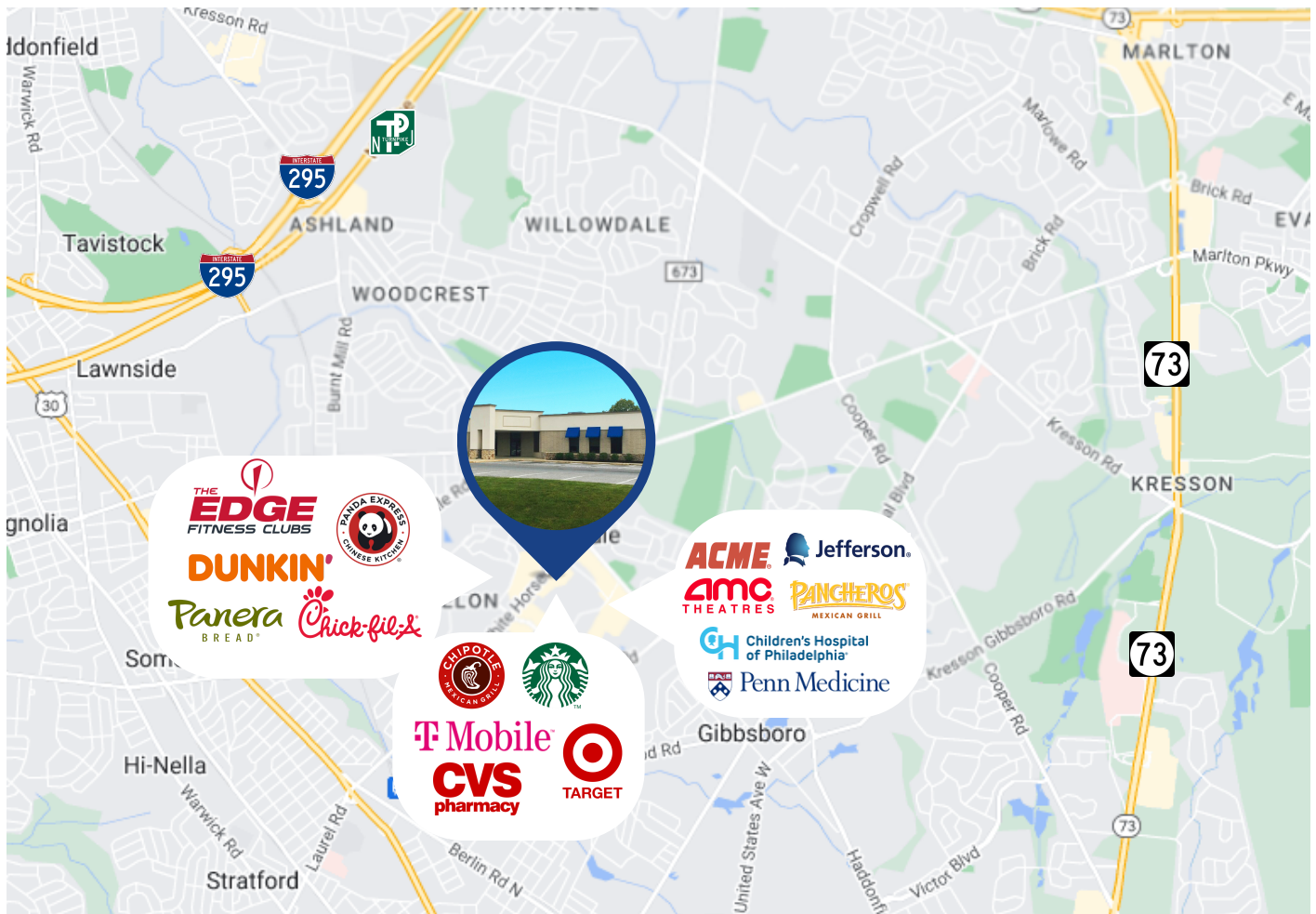
**Lease Price:** Call for information

**Signage:** Building & pylon signage

## PROPERTY AREA/HIGHLIGHTS

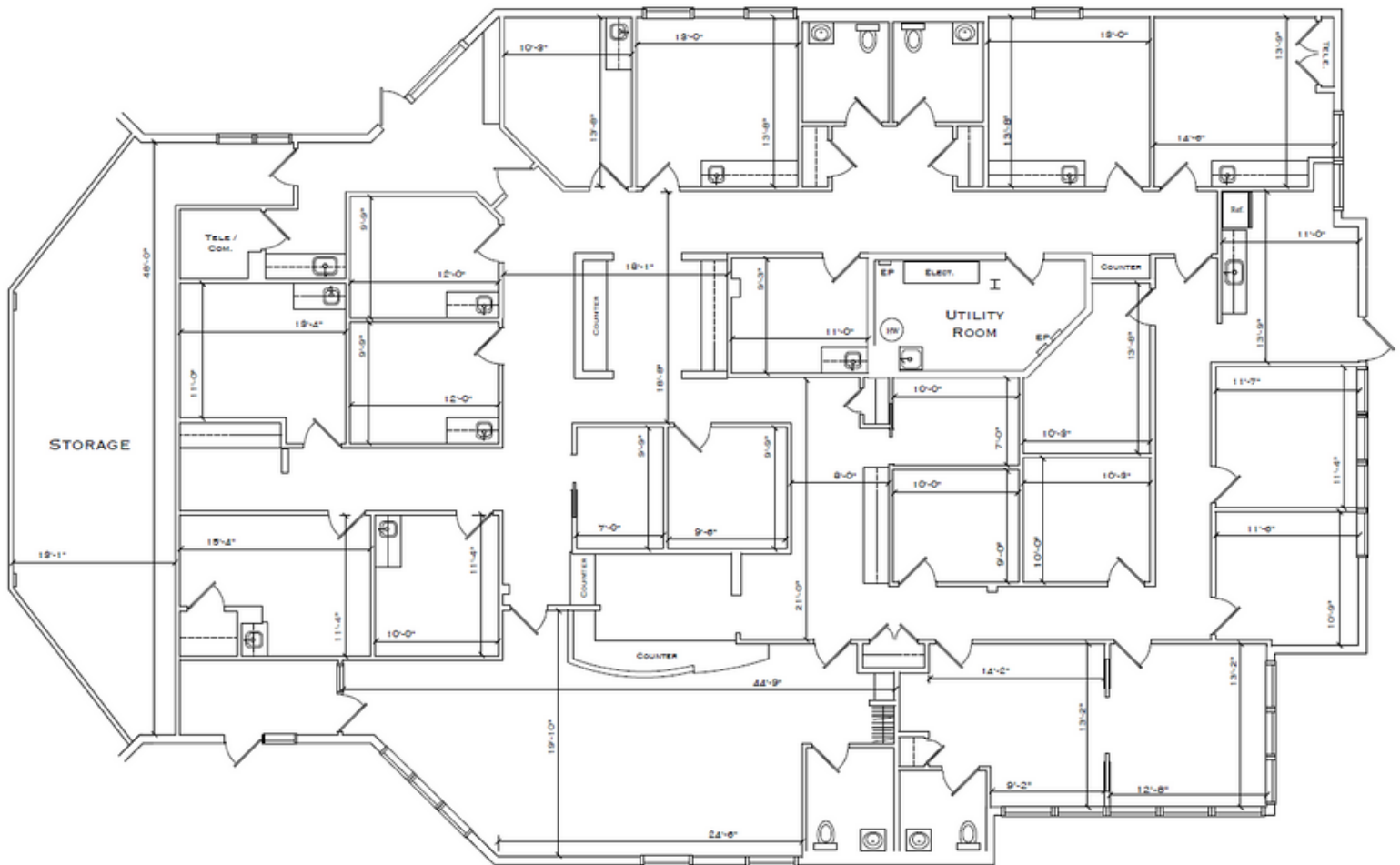
- Fully fit-out medical office suite
- Available for immediate occupancy
- Ample parking
- Property sits along heavily traveled White Horse Road (20,134 VPD)
- Well-maintained and landscaped
- Surrounded by numerous notable retailers and healthcare providers
- Easy access to Route 73, I-295, NJ Turnpike and White Horse Pike

## AERIAL MAP



The foregoing information was furnished to us by sources which we deem to be reliable, but no warranty or representation is made as to the accuracy thereof. Subject to correction of errors, omissions, change of price, prior sale or withdrawal from market without notice.

## FLOOR PLAN



The foregoing information was furnished to us by sources which we deem to be reliable, but no warranty or representation is made as to the accuracy thereof. Subject to correction of errors, omissions, change of price, prior sale or withdrawal from market without notice.



## ADDITIONAL PHOTOS



The foregoing information was furnished to us by sources which we deem to be reliable, but no warranty or representation is made as to the accuracy thereof. Subject to correction of errors, omissions, change of price, prior sale or withdrawal from market without notice.