

# PROMINENT FLEX PROPERTY AVAILABLE

FLEX BUILDING,  
CONTRACTOR  
YARD,  
SHOWROOM &  
SINGLE FAMILY



## 659 SWEDESBORO ROAD GIBBSTOWN, NJ

**Ryan Barikian**  
Vice President  
856.383.5355  
ryan.barikian@wolfcre.com



The foregoing information was furnished to us by sources which we deem to be reliable, but no warranty or representation is made as to the accuracy thereof.  
Subject to correction of errors, omissions, change of price, prior sale or withdrawal from market without notice.



**Wolf Commercial Real Estate**  
**www.WolfCRE.com**



## PROPERTY DESCRIPTION

**Location:** 659 Swedesboro Road  
Gibbstown, NJ 08027

**Single Family:** +/-1,500 SF  
Well water/Septic  
3 Bed  
1.5 Bath

**Size/SF:** Two Flex Buildings (+/-2,250 SF)

- +/-1,500 SF Shop
- +/-750 SF Showroom

**Sale Price:** Call for information

**Acreage:** 5.74 acres of land

**Signage:** Monument signage

### Additional Details:

**Ceiling Height:** 13' Ceiling Height - Shop  
10' Ceiling Height - Showroom

- Existing business for sale as well
- Perfect for landscaping company or contractor needing outside storage/lay-down yard
- Easy access to Route 130, I-295 and both the Commodore Barry and Delaware Memorial Bridges

**Drive-ins:** Shop

- One 10'x12'
- One 8'x8'

Showroom

- Two 8'x10'

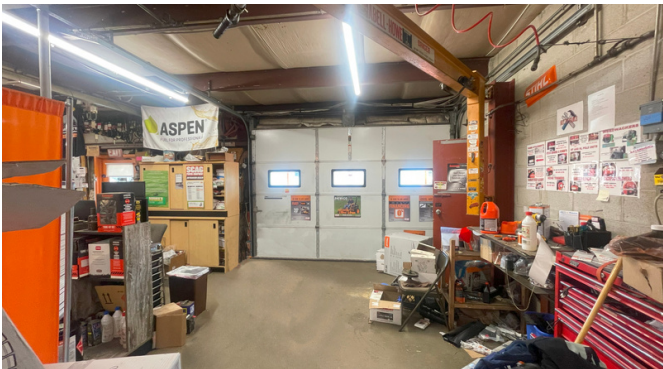
## AERIAL MAP



The foregoing information was furnished to us by sources which we deem to be reliable, but no warranty or representation is made as to the accuracy thereof. Subject to correction of errors, omissions, change of price, prior sale or withdrawal from market without notice.



## ADDITIONAL PHOTOS



The foregoing information was furnished to us by sources which we deem to be reliable, but no warranty or representation is made as to the accuracy thereof. Subject to correction of errors, omissions, change of price, prior sale or withdrawal from market without notice.



## TAX MAP



The foregoing information was furnished to us by sources which we deem to be reliable, but no warranty or representation is made as to the accuracy thereof. Subject to correction of errors, omissions, change of price, prior sale or withdrawal from market without notice.