

PROMINENT PROFESSIONAL BUILDING FOR LEASE

HIGHLY
VISIBLE
ROUTE 70
LOCATION



**1951 ROUTE 70 EAST
CHERRY HILL, NJ**

Jason Wolf
Managing Principal
215.588.8800
jason.wolf@wolfcre.com



The foregoing information was furnished to us by sources which we deem to be reliable, but no warranty or representation is made as to the accuracy thereof.
Subject to correction of errors, omissions, change of price, prior sale or withdrawal from market without notice.



Wolf Commercial Real Estate
www.WolfCRE.com



PROPERTY DESCRIPTION

Location: 1951 Route 70 East
Cherry Hill, NJ 08003

Size/SF: +/-3,000 SF

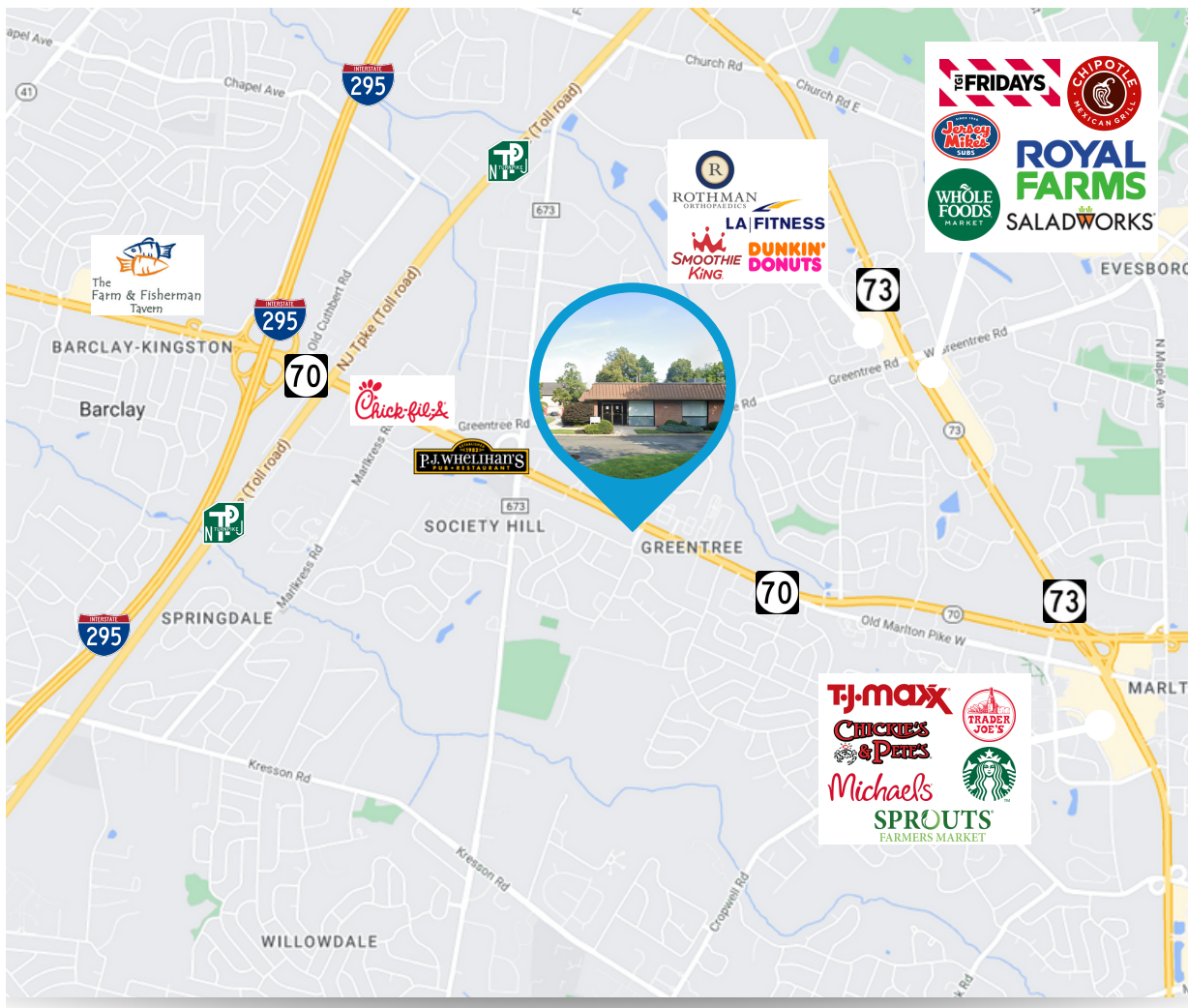
Lease Price: Call for information

Signage: Monument pylon & building

PROPERTY AREA/HIGHLIGHTS

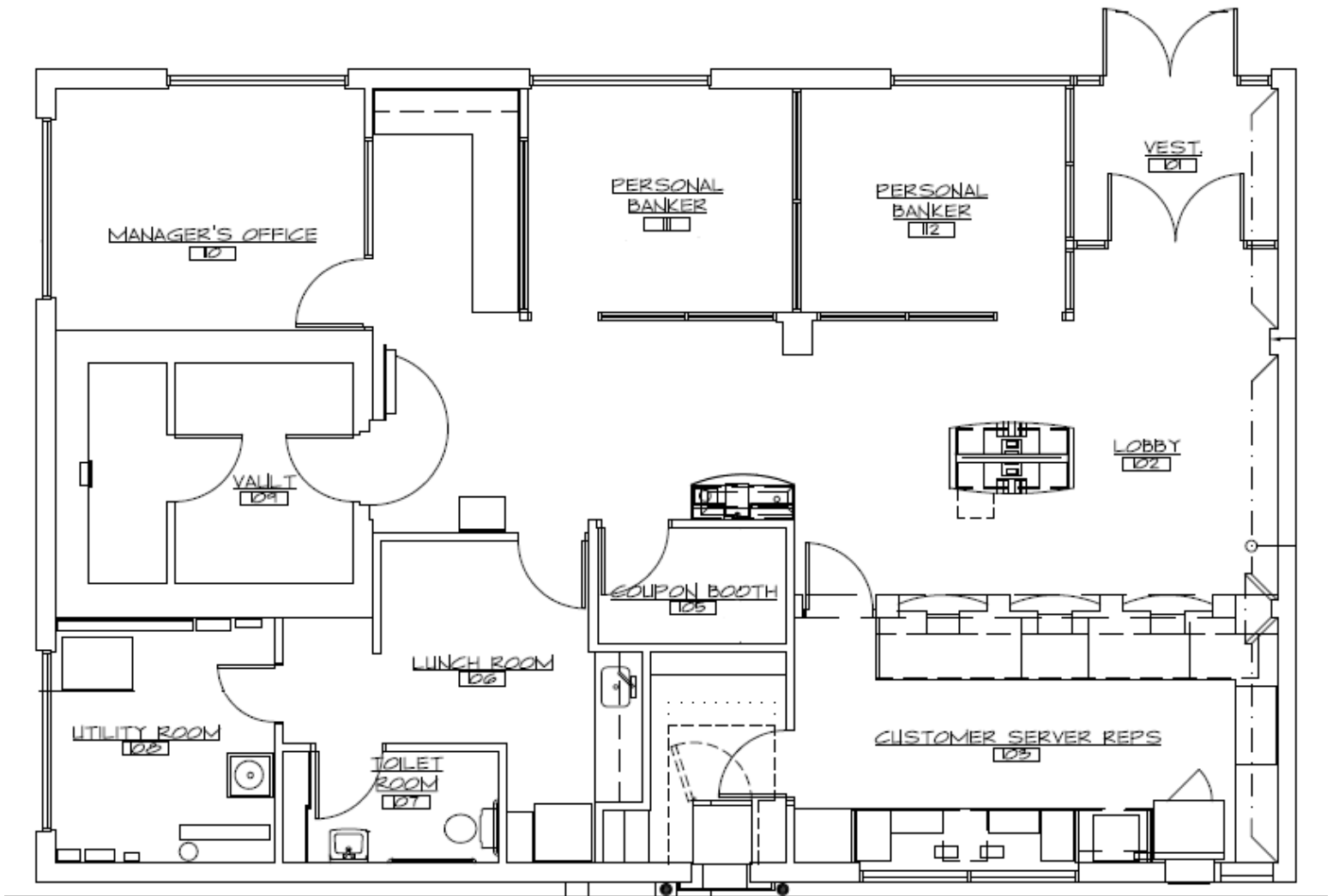
- Ideal for professional office users
- Available for immediate occupancy
- Drive-thru available
- Ample parking
- Situated directly off heavily traveled Route 70 (54,517 VPD)
- Easy access to Route 73, I-295 and NJ Turnpike
- Close proximity to various retailers, restaurants and medical facilities

RETAILER MAP



The foregoing information was furnished to us by sources which we deem to be reliable, but no warranty or representation is made as to the accuracy thereof. Subject to correction of errors, omissions, change of price, prior sale or withdrawal from market without notice.

FLOOR PLAN



The foregoing information was furnished to us by sources which we deem to be reliable, but no warranty or representation is made as to the accuracy thereof. Subject to correction of errors, omissions, change of price, prior sale or withdrawal from market without notice.