

# PROMINENT OFFICE SPACE AVAILABLE FOR LEASE



## 100 HADDONTOWNE COURT CHERRY HILL, NJ

**Brian Goren**  
Senior Advisor  
410.371.2208  
brian.goren@wolfcre.com

**Evan Zweben**  
Executive Vice President  
856.261.5548  
evan.zweben@wolfcre.com



The foregoing information was furnished to us by sources which we deem to be reliable, but no warranty or representation is made as to the accuracy thereof.  
Subject to correction of errors, omissions, change of price, prior sale or withdrawal from market without notice.



**Wolf Commercial Real Estate**  
**www.WolfCRE.com**



## PROPERTY DESCRIPTION

**Location:** 100 Haddontowne Court  
Cherry Hill, NJ 08034

**Size/SF:** +/- 1,180 SF Total

**Lease Price:** \$3,500/mo

## PROPERTY AREA/HIGHLIGHTS

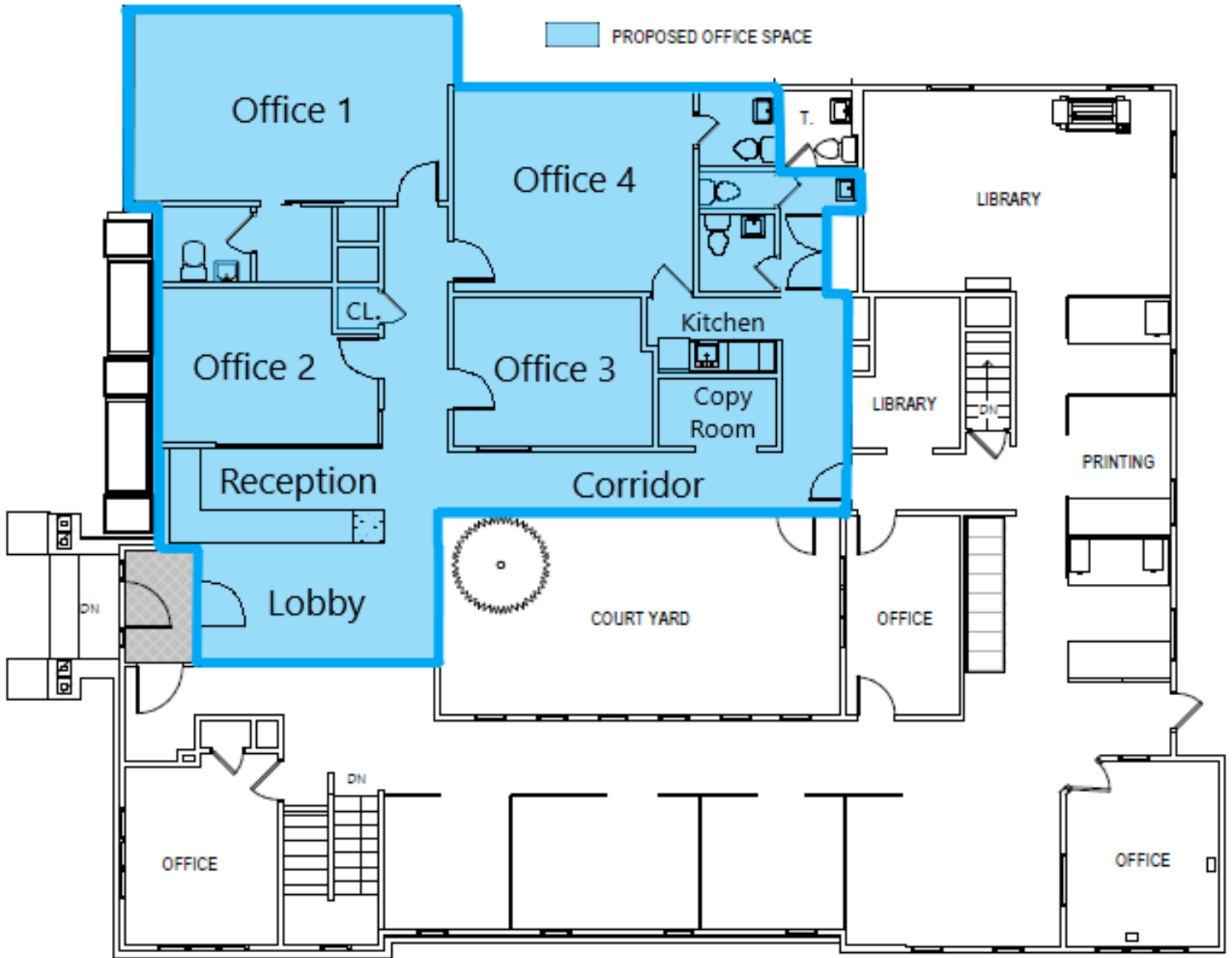
- Ideal for professional office users
- Four (4) private offices
- Two (2) restrooms in private offices
- Open reception and waiting area
- Kitchenette and two (2) public bathrooms
- Storage closet
- Shared courtyard
- Ample parking
- Direct access to I-295 and NJ Turnpike
- Close proximity to prominent Downtown Haddonfield and Woodcrest PATCO Station

## AERIAL MAP



The foregoing information was furnished to us by sources which we deem to be reliable, but no warranty or representation is made as to the accuracy thereof. Subject to correction of errors, omissions, change of price, prior sale or withdrawal from market without notice.

**FLOOR PLAN**



The foregoing information was furnished to us by sources which we deem to be reliable, but no warranty or representation is made as to the accuracy thereof. Subject to correction of errors, omissions, change of price, prior sale or withdrawal from market without notice.



**ADDITIONAL IMAGES**



The foregoing information was furnished to us by sources which we deem to be reliable, but no warranty or representation is made as to the accuracy thereof. Subject to correction of errors, omissions, change of price, prior sale or withdrawal from market without notice.