

# Class "A" Office Suites For Sublease

50 Lake Center, Marlton, NJ



## CONTACT US

**Evan Zweben**

*Executive VP*

856.261.5548

evan.zweben@wolfcre.com

**Erin Warwick**

*Executive VP*

609.744.9964

erin.warwick@wolfcre.com



The foregoing information was furnished to us by sources which we deem to be reliable, but no warranty or representation is made as to the accuracy thereof. Subject to correction of errors, omissions, change of price, prior sale or withdrawal from market without notice.



**Wolf Commercial Real Estate**  
**www.WolfCRE.com**



Main Lobby



## BUILDING AMENITIES & INFORMATION

- 4-story Class "A" office building
- Recently renovated common areas
- Serene views with scenic walking path around lake
- 400 striped parking spaces (4.5 per 1,000 SF)
- Strong ownership with proven track record
- Deli within walking distance

## SUBLEASE INFORMATION

- **Suite 201: 10,060 SF**
- **Suite 300: 23,571 SF**
  - New CAT 6 cabling in place (dual-drop to each location)
  - Recently installed Tenant card-access system

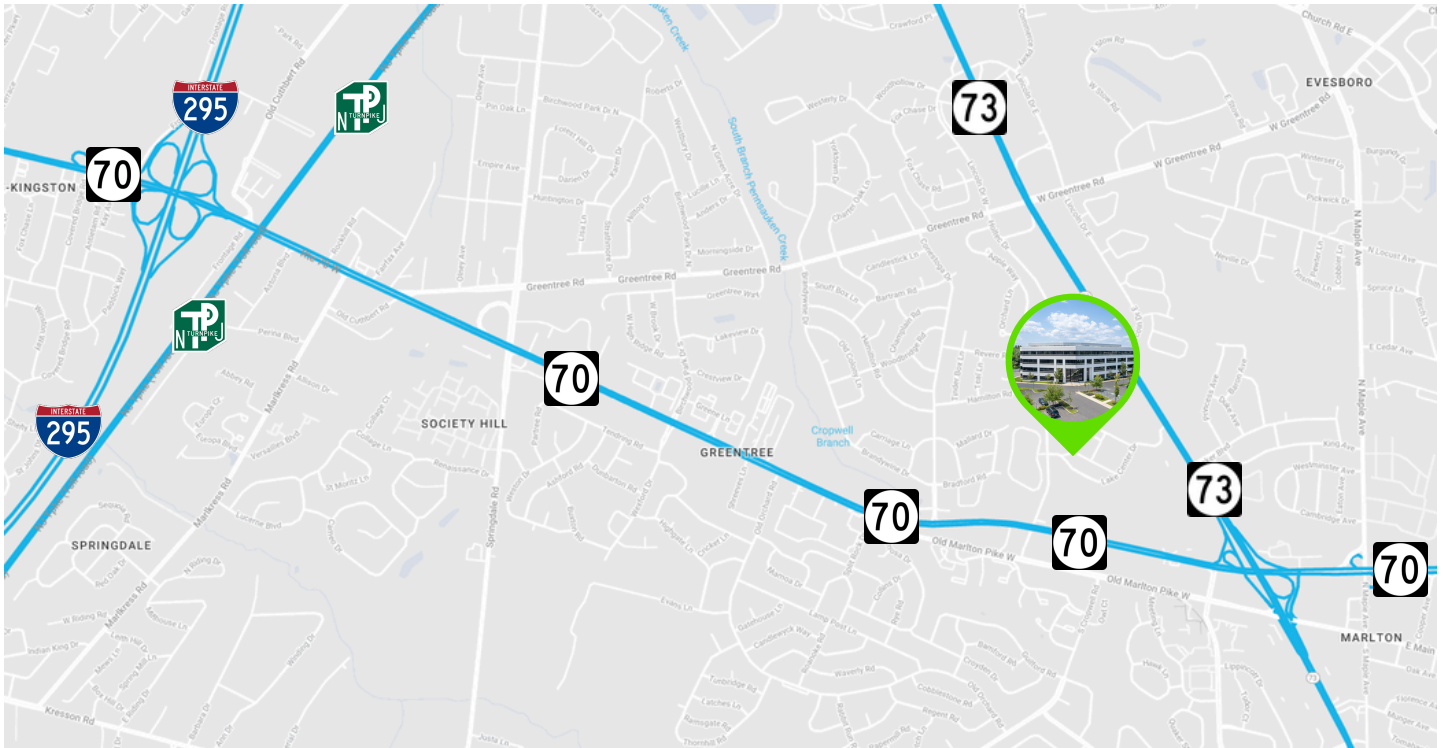


Walking Path with Lake

The foregoing information was furnished to us by sources which we deem to be reliable, but no warranty or representation is made as to the accuracy thereof. Subject to correction of errors, omissions, change of price, prior sale or withdrawal from market without notice.

## LOCATION HIGHLIGHTS

- Located within Lake Center Executive Park with entrances on Route 73 & Cropwell Road
- Employees & visitors have easy access to Routes 70, 73, I-295 and NJ Turnpike



### LODGING

- Hyatt Place Mt. Laurel
- Holiday Inn Express
- Hampton Inn Philadelphia/Mt. Laurel

### BANKING & GAS

- TD Bank
- Chase Bank
- Republic Bank
- Wawa
- Royal Farms
- Sunoco

### RECREATION

- Kohl's
- Wineworks
- Staples
- HomeGoods
- CVS
- Michael's
- TJ Maxx
- Trader Joe's
- Pep Boys
- Planet Fitness
- Whole Foods
- LA Fitness
- Barnes & Noble
- Joe Canal's
- Hand & Stone
- Jiffy Lube

### DINING

- Shake Shack
- Fleming's Steak House
- Primo Hoagies
- honeygrow
- Olga's Diner
- Chick-fil-A
- Mission BBQ
- TGI Friday's
- Starbucks
- Marlton Diner
- Chipotle
- Chickie's & Pete's
- Osushi
- Dunkin Donuts
- Smoothie King
- MOD Pizza

The foregoing information was furnished to us by sources which we deem to be reliable, but no warranty or representation is made as to the accuracy thereof. Subject to correction of errors, omissions, change of price, prior sale or withdrawal from market without notice.

## FLOOR PLAN

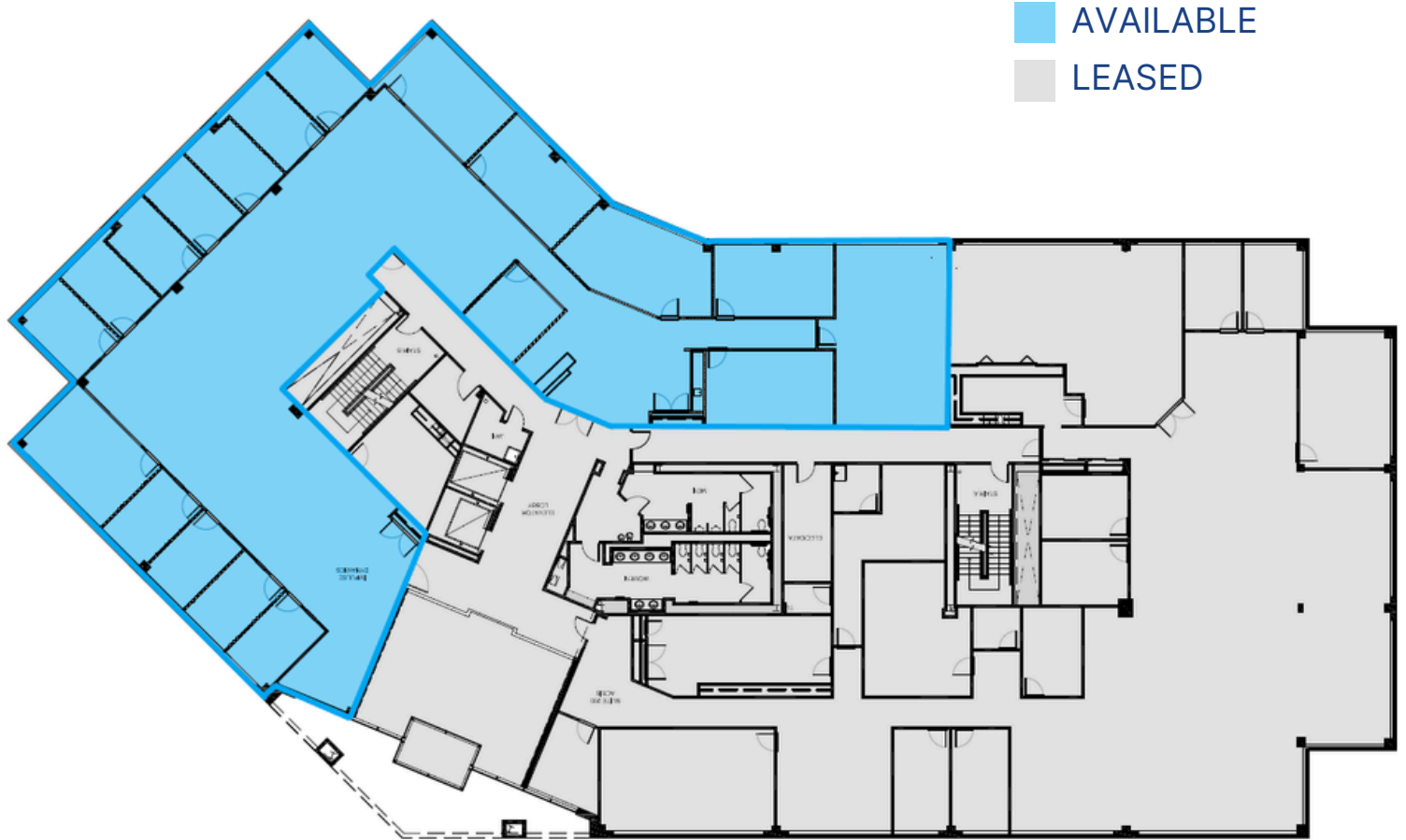
SUITE 110: 2,122 SF



The foregoing information was furnished to us by sources which we deem to be reliable, but no warranty or representation is made as to the accuracy thereof. Subject to correction of errors, omissions, change of price, prior sale or withdrawal from market without notice.

**FLOOR PLAN**

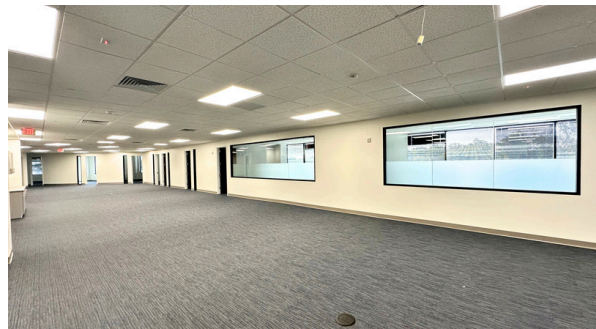
SUITE 201: 10,060 SF



The foregoing information was furnished to us by sources which we deem to be reliable, but no warranty or representation is made as to the accuracy thereof. Subject to correction of errors, omissions, change of price, prior sale or withdrawal from market without notice.

**FLOOR PLAN**

SUITE 300: 23,571 SF



The foregoing information was furnished to us by sources which we deem to be reliable, but no warranty or representation is made as to the accuracy thereof. Subject to correction of errors, omissions, change of price, prior sale or withdrawal from market without notice.