

PROMINENT OFFICE CONDO AVAILABLE FOR SALE

THE
PAVILIONS
AT
GREENTREE



**651 ROUTE 73 NORTH
SUITE 307
MARLTON, NJ**

Brian Goren
Senior Advisor
410.371.2208
brian.goren@wolfcre.com



The foregoing information was furnished to us by sources which we deem to be reliable, but no warranty or representation is made as to the accuracy thereof.
Subject to correction of errors, omissions, change of price, prior sale or withdrawal from market without notice.



Wolf Commercial Real Estate
www.WolfCRE.com



PROPERTY DESCRIPTION

Location: 651 Route 73 North
Suite 307
Marlton, NJ 08053

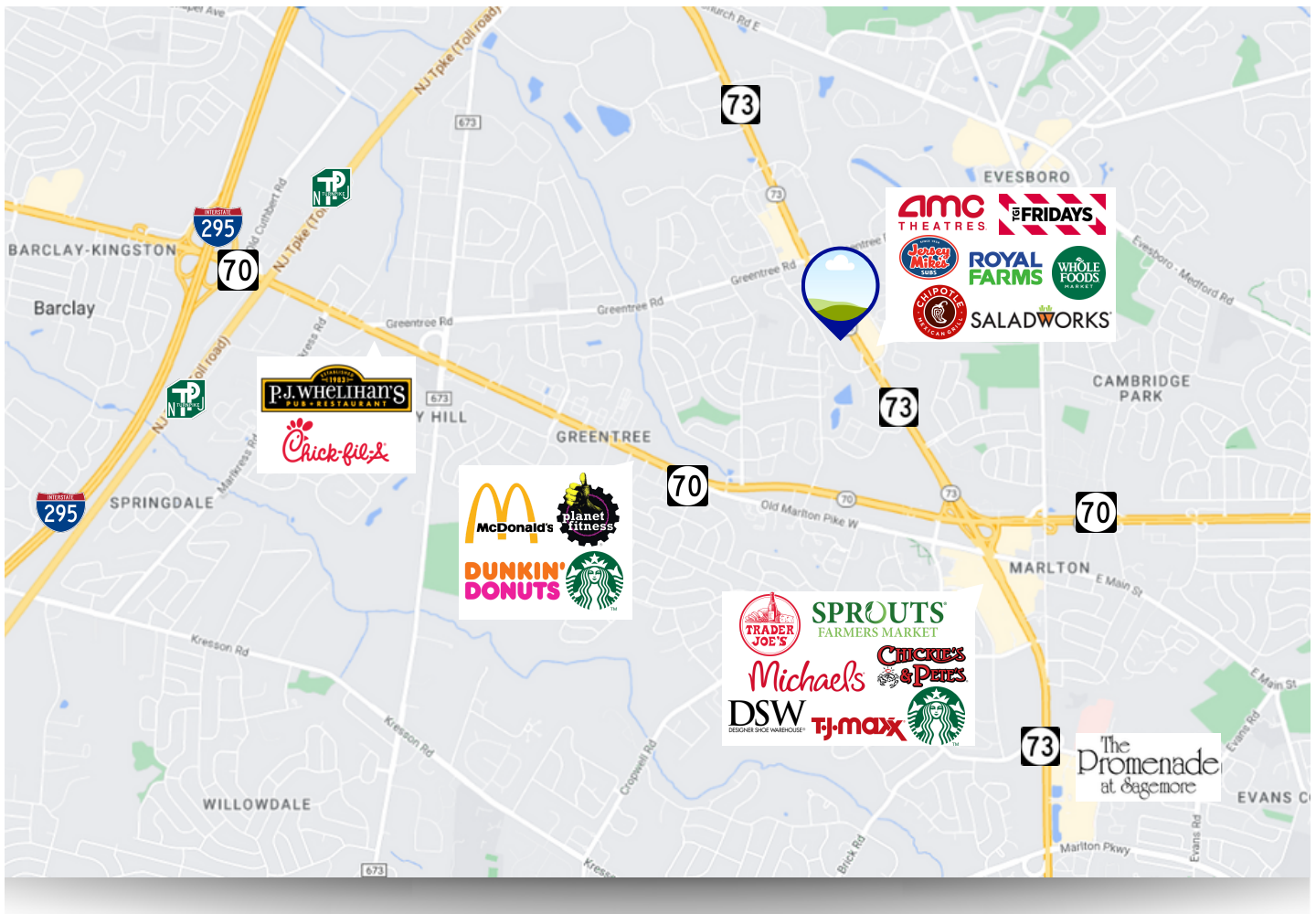
Size/SF: +/- 1,212 SF

Sale Price: Call for information

PROPERTY AREA/HIGHLIGHTS

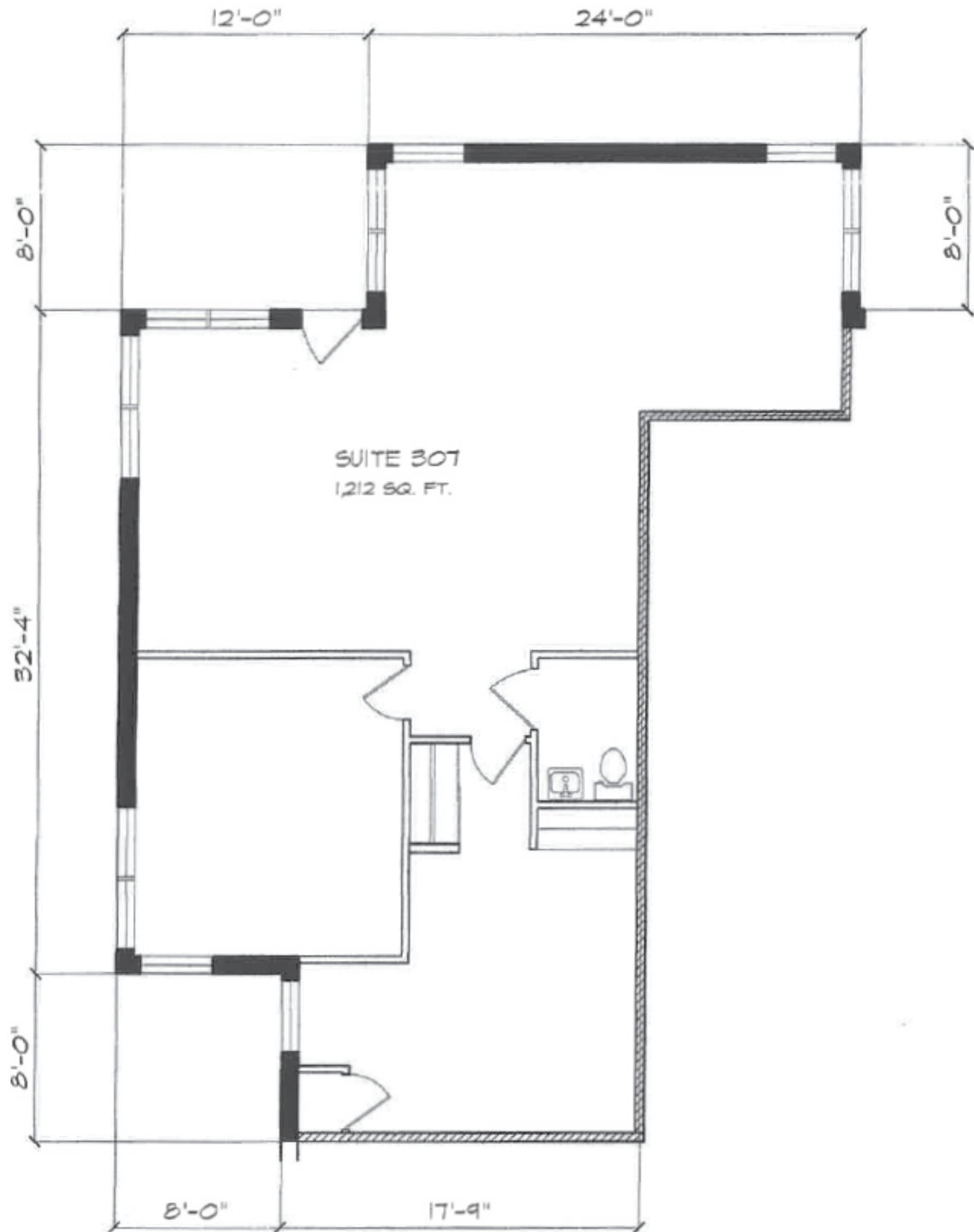
- Single story office condo
- Ideal for professional office users
- Cathedral ceilings with skylights
- Open floor plan
- Reception area
- Two private offices
- Kitchenette and bathroom
- Easy access to Routes 73, 70, I-295 and NJ Turnpike
- Close to various retailers & restaurants

RETAILER MAP



The foregoing information was furnished to us by sources which we deem to be reliable, but no warranty or representation is made as to the accuracy thereof. Subject to correction of errors, omissions, change of price, prior sale or withdrawal from market without notice.

FLOOR PLAN



The foregoing information was furnished to us by sources which we deem to be reliable, but no warranty or representation is made as to the accuracy thereof. Subject to correction of errors, omissions, change of price, prior sale or withdrawal from market without notice.

ADDITIONAL IMAGES



**PRIVATE OFFICES
OPEN FLOOR PLAN
RECEPTION AREA
KITCHENETTE**



The foregoing information was furnished to us by sources which we deem to be reliable, but no warranty or representation is made as to the accuracy thereof. Subject to correction of errors, omissions, change of price, prior sale or withdrawal from market without notice.