

PROMINENT VOORHEES DEVELOPMENT OPPORTUNITY



**710 CENTENNIAL BOULEVARD
VOORHEES, NJ**



Jason Wolf
Managing Principal
215.588.8800
jason.wolf@wolfcre.com

The foregoing information was furnished to us by sources which we deem to be reliable, but no warranty or representation is made as to the accuracy thereof.
Subject to correction of errors, omissions, change of price, prior sale or withdrawal from market without notice.



Wolf Commercial Real Estate
www.WolfCRE.com



PROPERTY DESCRIPTION

Location: 710 Centennial Blvd.
Voorhees, NJ 08043

Size/SF: +/- 3 acres of land

Sale Price: Call for information

Zoning: GB-2

PROPERTY AREA/HIGHLIGHTS

- Ideal for multiple uses such as: retail medical, daycare facility, office and recreational facilities
- Utility Providers:
 - Electric: PSE&G
 - Gas: South Jersey Gas
- Close proximity to Virtua Hospital, Cooper Health, Quest Diagnostics, CVS & Walgreens Pharmacies
- Easy access to Routes 70 and 73, I-295 and NJ Turnpike

Aerial

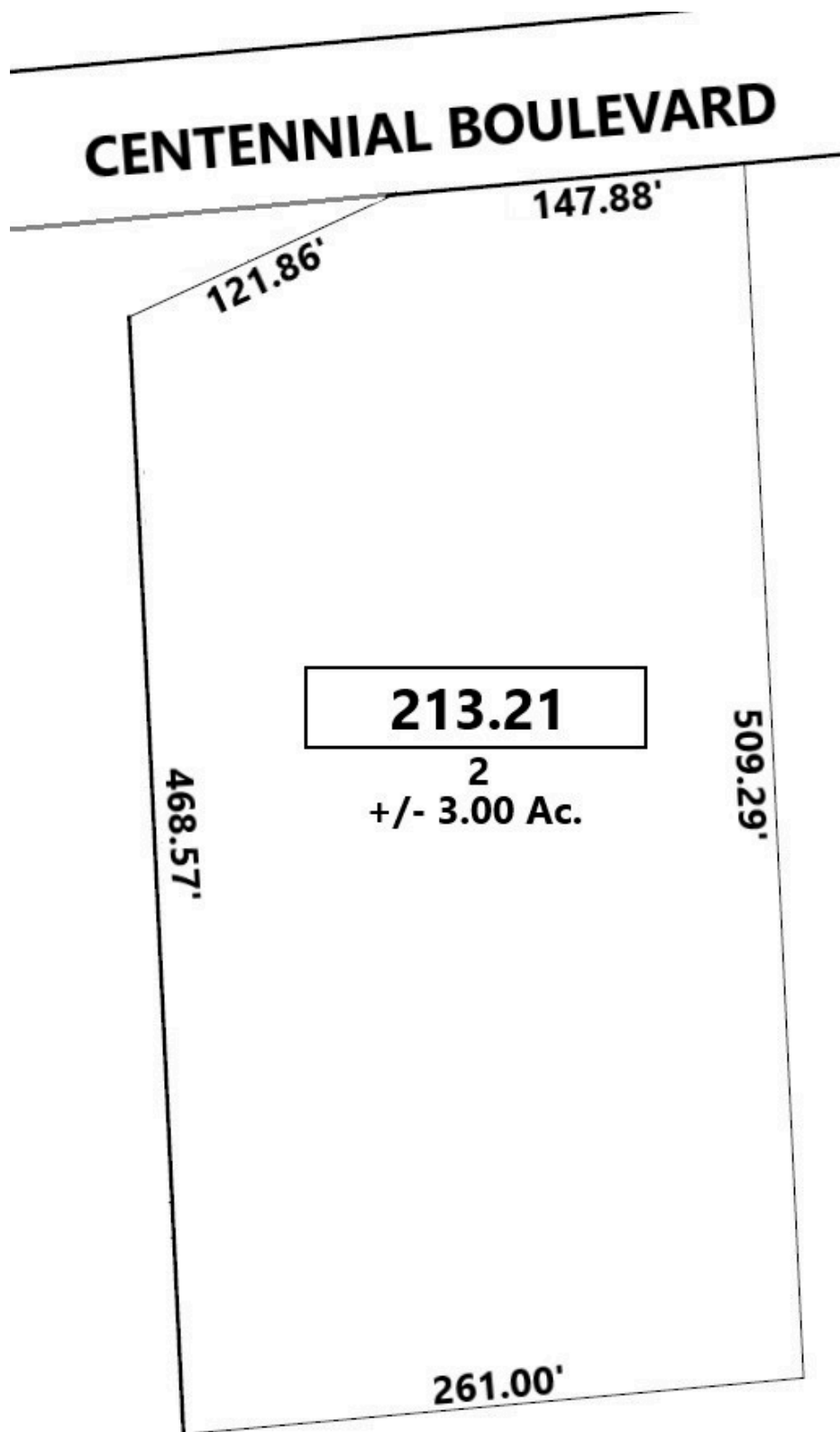


Demographics

	1 Mile	3 Miles	5 Miles
Average HH Income	\$159,561	\$147,089	\$126,915
Total Households	3,736	25,276	73,914
Total Population	9,234	66,429	190,742

The foregoing information was furnished to us by sources which we deem to be reliable, but no warranty or representation is made as to the accuracy thereof. Subject to correction of errors, omissions, change of price, prior sale or withdrawal from market without notice.

Tax Map



The foregoing information was furnished to us by sources which we deem to be reliable, but no warranty or representation is made as to the accuracy thereof.
Subject to correction of errors, omissions, change of price, prior sale or withdrawal from market without notice.