

UNIQUE OPPORTUNITY AT RODIN PLACE

JOIN PHILADELPHIA
PEDIATRIC DENTISTRY,
ADVOCARE
FAIRMOUNT
PEDIATRICS &
ADOLESCENT
MEDICINE, WILLS EYE
PHYSICIANS, AND
CLEMENTINE
MONTESSORI AND
NEURABILITIES



2000 HAMILTON STREET PHILADELPHIA, PA

**BROKER
BONUS**
\$1/SF

Todd Monahan
Managing Director & Exec. VP
610.213.1647
todd.monahan@wolfcre.com

Bethany Brown
Vice President 267.226.6602
bethany.brown@wolfcre.com



The foregoing information was furnished to us by sources which we deem to be reliable, but no warranty or representation is made as to the accuracy thereof.
Subject to correction of errors, omissions, change of price, prior sale or withdrawal from market without notice.



Wolf Commercial Real Estate
www.WolfCRE.com



PROPERTY DESCRIPTION

Location: 2000 Hamilton Street
Philadelphia, PA 19130

**Size/
SF Available:** Suite 303: 3,370 SF

Lease Price: Call for information

**Current
Conditions:**

- 1 large A perimeter office
- 4 interior offices or huddle rooms
- 1 medium sized conference room
- 1 large conference or training room 24.5' x 25.5'
- Kitchenette
- Large open work area

PROPERTY AREA/HIGHLIGHTS

- Ideal for medical office users
- Great space directly on 3rd floor elevator lobby
- Safe and secure parking
- 10 Tesla Super Charger charging stations
- Situated in the Art Museum/Fairmount Area
- Close proximity to active convenient national retailers: Target and Whole Foods
- Join Philadelphia Pediatric Dentistry, Advocate Fairmount Pediatrics & Adolescent Medicine, Wills Eye Physicians, Clementine Montessori and Neurabilities

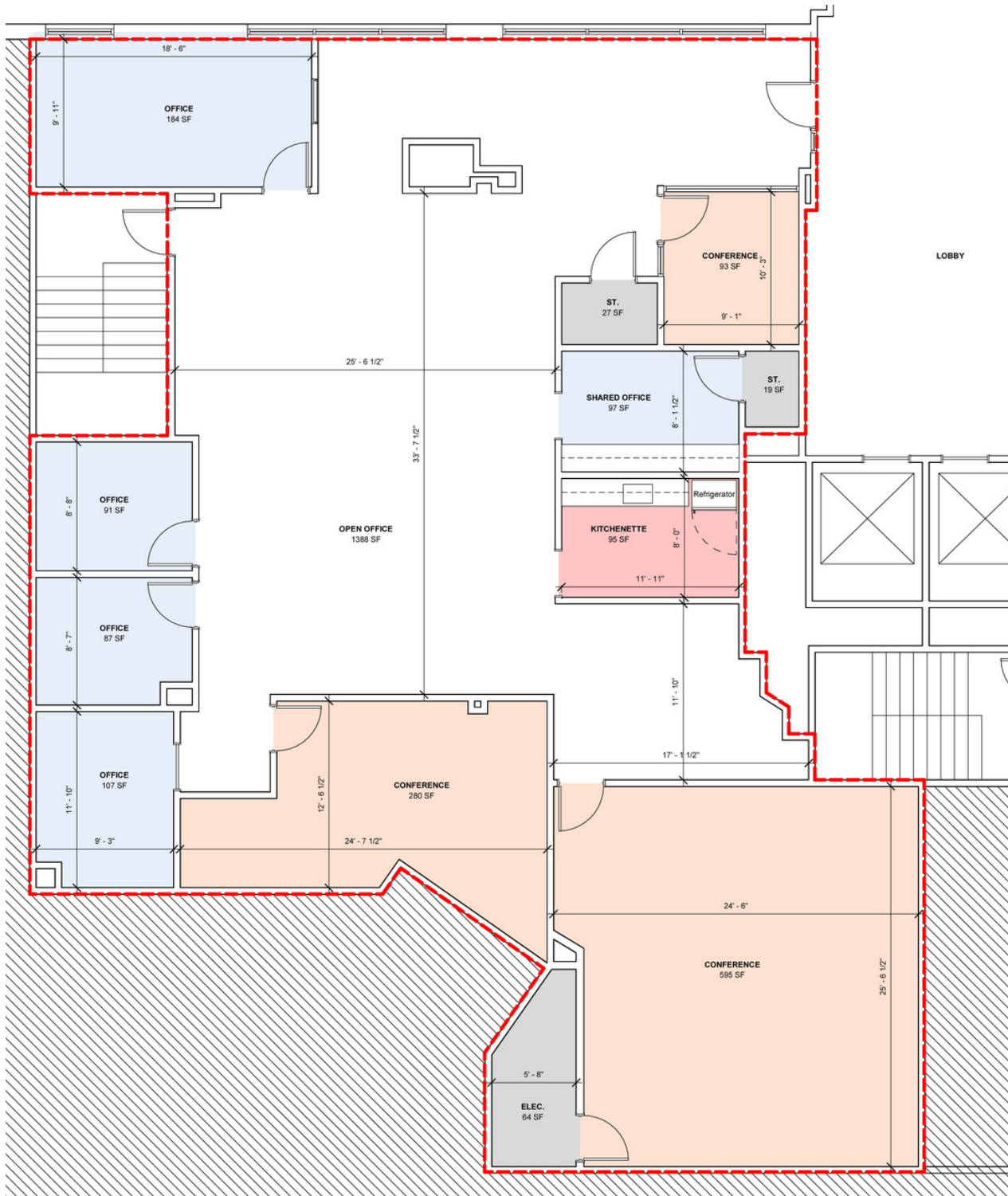


2020 DEMOGRAPHICS

	.25 Miles	.5 Miles	1 Mile
Est. Population	5,730	20,488	76,514
Est. Households	3,492	12,291	40,908
Est. Avg. HH Income	\$131,031	\$129,225	\$115,856

The foregoing information was furnished to us by sources which we deem to be reliable, but no warranty or representation is made as to the accuracy thereof. Subject to correction of errors, omissions, change of price, prior sale or withdrawal from market without notice.

**FLOOR PLAN
SUITE 303: 3,988 SF**



The foregoing information was furnished to us by sources which we deem to be reliable, but no warranty or representation is made as to the accuracy thereof. Subject to correction of errors, omissions, change of price, prior sale or withdrawal from market without notice.