

PROMINENT LAND SITE AVAILABLE FOR SALE

DEVELOPMENT
OPPORTUNITY



1919 BURLINGTON-MOUNT HOLLY ROAD WESTAMPTON, NJ

Evan Zweben
Executive Vice President
856.261.5548
evan.zweben@wolfcre.com



The foregoing information was furnished to us by sources which we deem to be reliable, but no warranty or representation is made as to the accuracy thereof.
Subject to correction of errors, omissions, change of price, prior sale or withdrawal from market without notice.



Wolf Commercial Real Estate
www.WolfCRE.com



PROPERTY DESCRIPTION

Location: 1919 Burlington-Mount Holly Road
Westampton, NJ 08060

Size/SF: +/- 110.34 acres

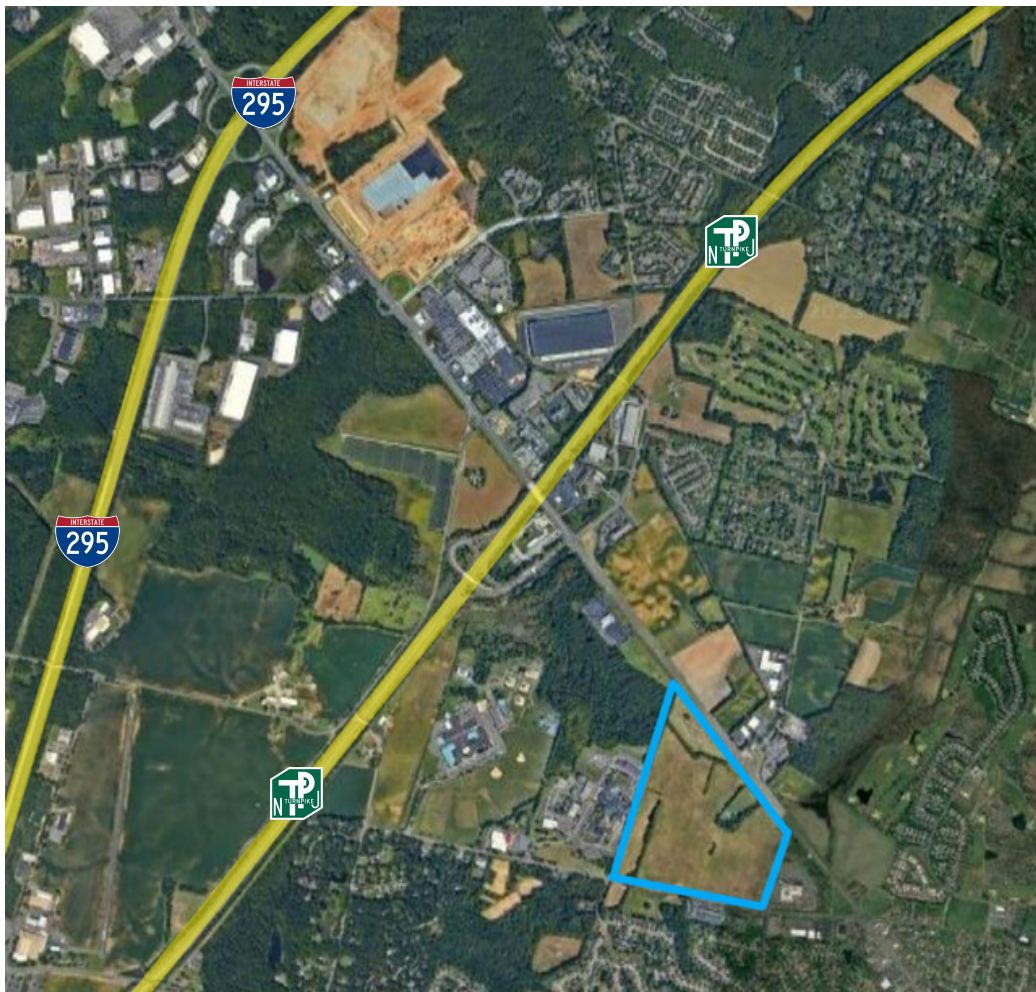
Sale Price: Call for information

Zoning: OR-1 and Commercial

PROPERTY AREA/HIGHLIGHTS

- Zoned Office Research 1 (OR-1) & Commercial (C)
 - Offices for business, executive, professional and administrative
 - Laboratories dedicated to research, design & experiment
 - Banks and financial institutions
 - Conference centers
 - Child-care centers
 - Retail and restaurants
- Situated on heavily traveled Route 541 (Burlington-Mt. Holly Road)
- Less than 1 mile to NJ Turnpike & 2 miles to I-295
- 3 Miles to Virtua Hospital of Mount Holly
- Surrounded by residential, restaurants and retailers

AERIAL MAP



The foregoing information was furnished to us by sources which we deem to be reliable, but no warranty or representation is made as to the accuracy thereof. Subject to correction of errors, omissions, change of price, prior sale or withdrawal from market without notice.