



1779 S. BURLINGTON ROAD | BRIDGETON, NJ

PROPERTY DESCRIPTION

Location	1779 S. Burlington Road Bridgeton, NJ 08302
Size / SF Available	+/- 11.65 acres of land
Sale Price	Call for information
Property / Area Description	<ul style="list-style-type: none"> • Zoned General Industry/Industrial • Eligible for 5-year tax abatement • 9 miles from Route 55 • Join National Neighbors: Lassonde, Perdue, and Americold

AERIAL MAP

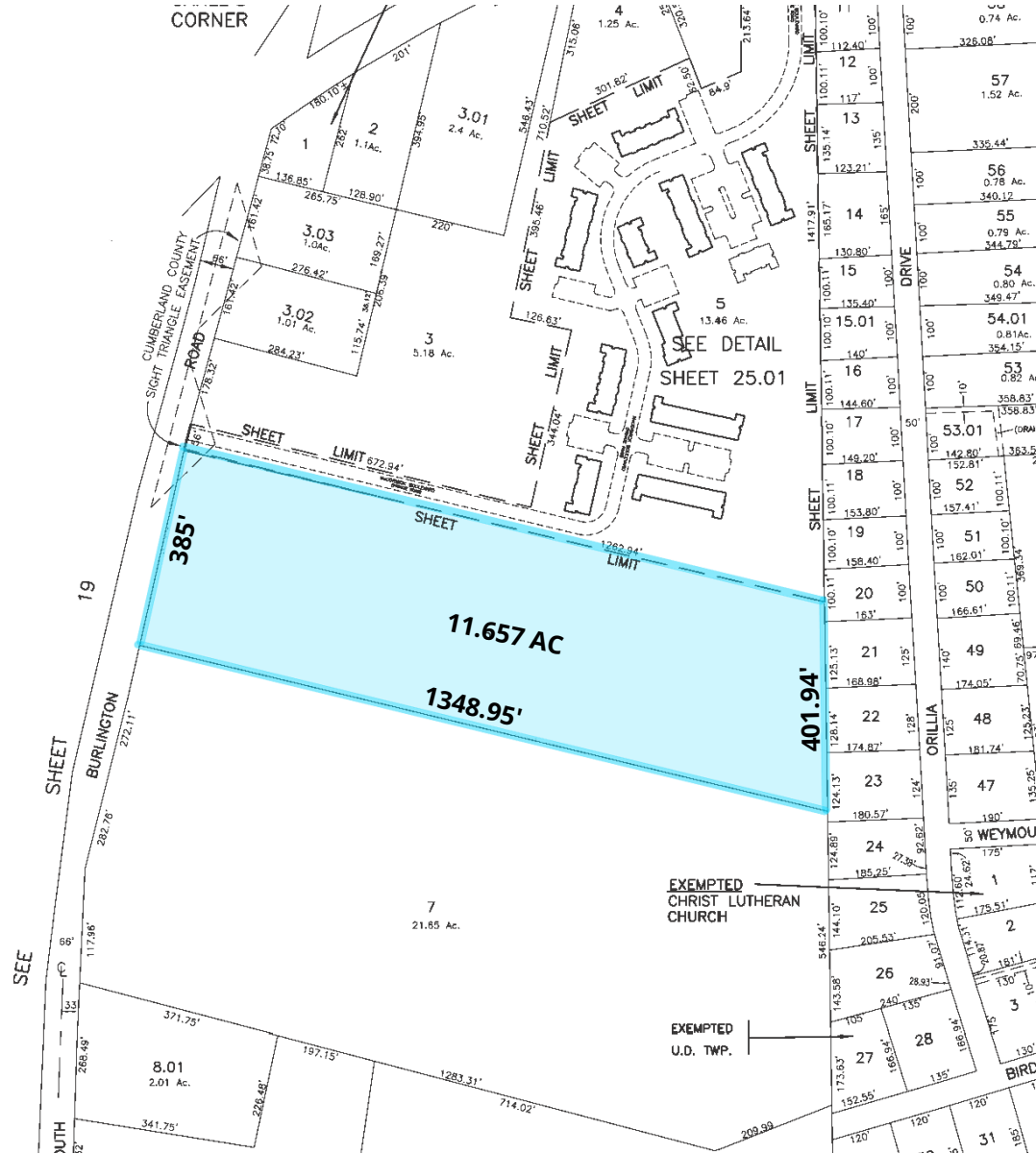


Contact Us

Ryan Barikian
Vice President
856.383.5355
ryan.barikian@wolfcre.com

The foregoing information was furnished to us by sources which we deem to be reliable, but no warranty or representation is made as to the accuracy thereof. Subject to correction of errors, omissions, change of price, prior sale or withdrawal from market without notice.

TAX MAP



The foregoing information was furnished to us by sources which we deem to be reliable, but no warranty or representation is made as to the accuracy thereof. Subject to correction of errors, omissions, change of price, prior sale or withdrawal from market without notice.