

1360 ROUTE 77 | BRIDGETON, NJ

PROPERTY DESCRIPTION

Location 1360 Route 77
Bridgeton, NJ 08302

Size / SF Available +/- 8.45 acres of land

Sale Price Call for information

Property / Area Description

- Zoned General Industry/Industrial
- Located in the Upper Deerfield Redevelopment Zone
- Eligible for tax pilots
- Eligible for 5 year tax abatement
- 8 miles from Route 55
- Join National Neighbors: Lassonde, Perdue, and Americold

Contact Us

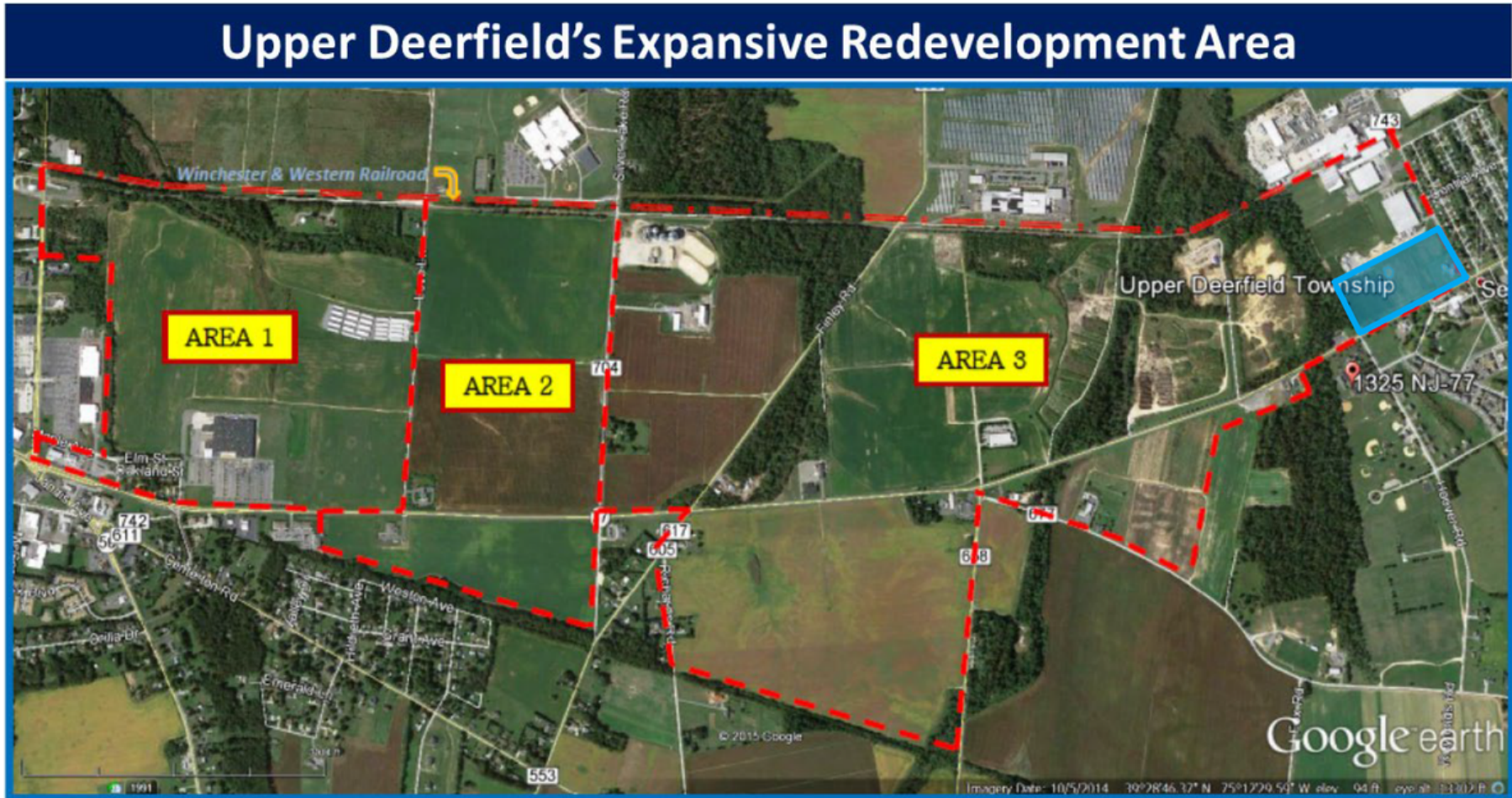
Ryan Barikian
Vice President
856.383.5355
ryan.barikian@wolfcre.com

AERIAL MAP



The foregoing information was furnished to us by sources which we deem to be reliable, but no warranty or representation is made as to the accuracy thereof. Subject to correction of errors, omissions, change of price, prior sale or withdrawal from market without notice.

REDEVELOPMENT MAP



The foregoing information was furnished to us by sources which we deem to be reliable, but no warranty or representation is made as to the accuracy thereof. Subject to correction of errors, omissions, change of price, prior sale or withdrawal from market without notice.