

**1360 ROUTE 77 | BRIDGETON, NJ**



## PROPERTY DESCRIPTION

<b>Location</b>	1360 Route 77 Bridgeton, NJ 08302
<b>Size / SF Available</b>	+/- 8.45 acres of land
<b>Sale Price</b>	Call for information
<b>Property / Area Description</b>	<ul style="list-style-type: none"> <li>• Zoned General Industry/Industrial</li> <li>• Located in the Upper Deerfield Redevelopment Zone</li> <li>• Eligible for tax pilots</li> <li>• Eligible for 5 year tax abatement</li> <li>• 8 miles from Route 55</li> <li>• Join National Neighbors: Lasonde, Perdue, and Americold</li> </ul>

## Contact Us

Ryan Barikian  
Vice President  
856.383.5355  
ryan.barikian@wolfcre.com

## AERIAL MAP

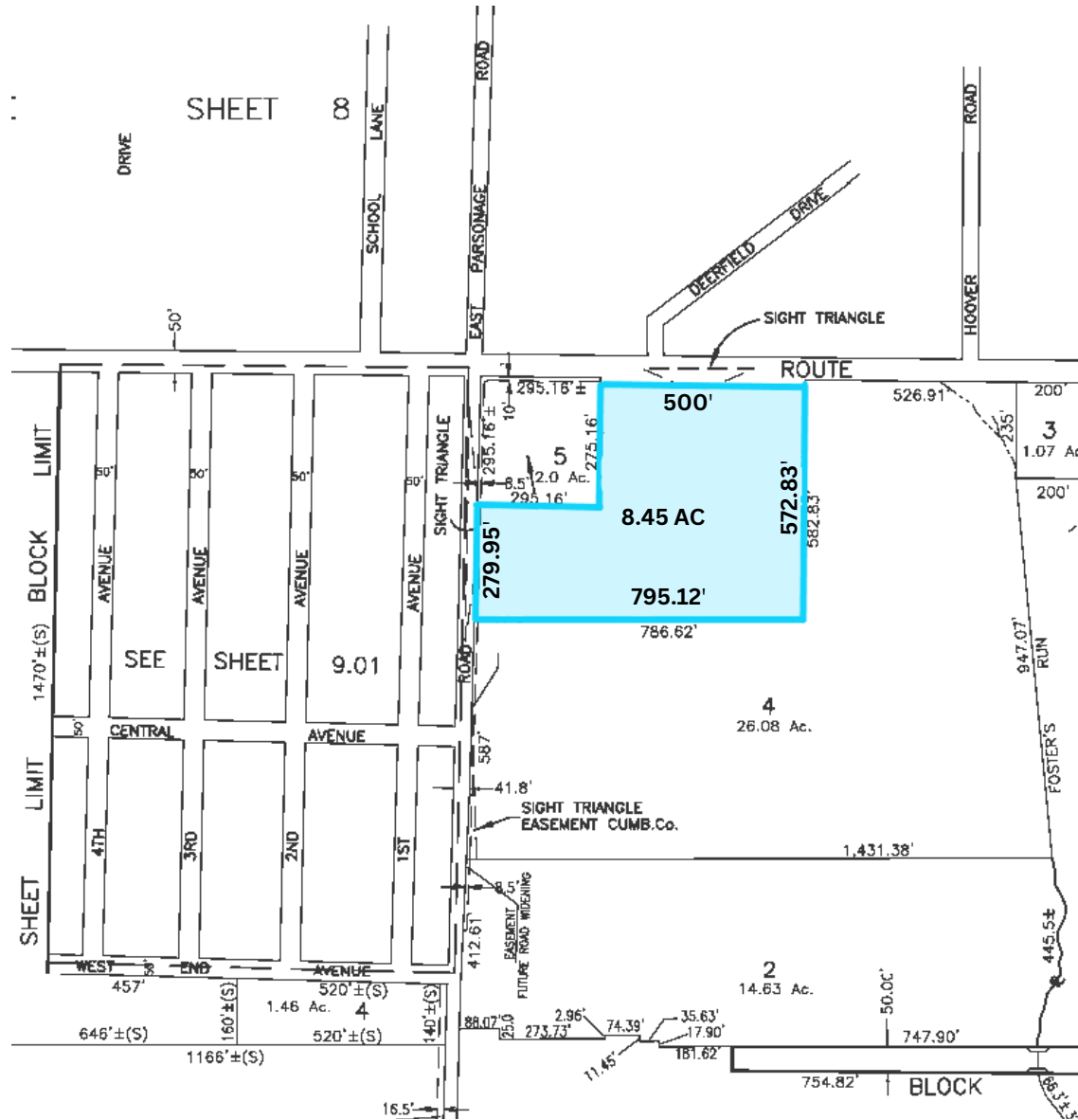


The foregoing information was furnished to us by sources which we deem to be reliable, but no warranty or representation is made as to the accuracy thereof. Subject to correction of errors, omissions, change of price, prior sale or withdrawal from market without notice.

# 1360 ROUTE 77, BRIDGETON, NJ 08302



## TAX MAP



The foregoing information was furnished to us by sources which we deem to be reliable, but no warranty or representation is made as to the accuracy thereof. Subject to correction of errors, omissions, change of price, prior sale or withdrawal from market without notice.

