

# PREMIER OFFICE SUITE



## AVAILABLE FOR LEASE

1934 OLNEY AVE, CHERRY HILL, NJ



Wolf Commercial Real Estate  
[www.WolfCRE.com](http://www.WolfCRE.com)



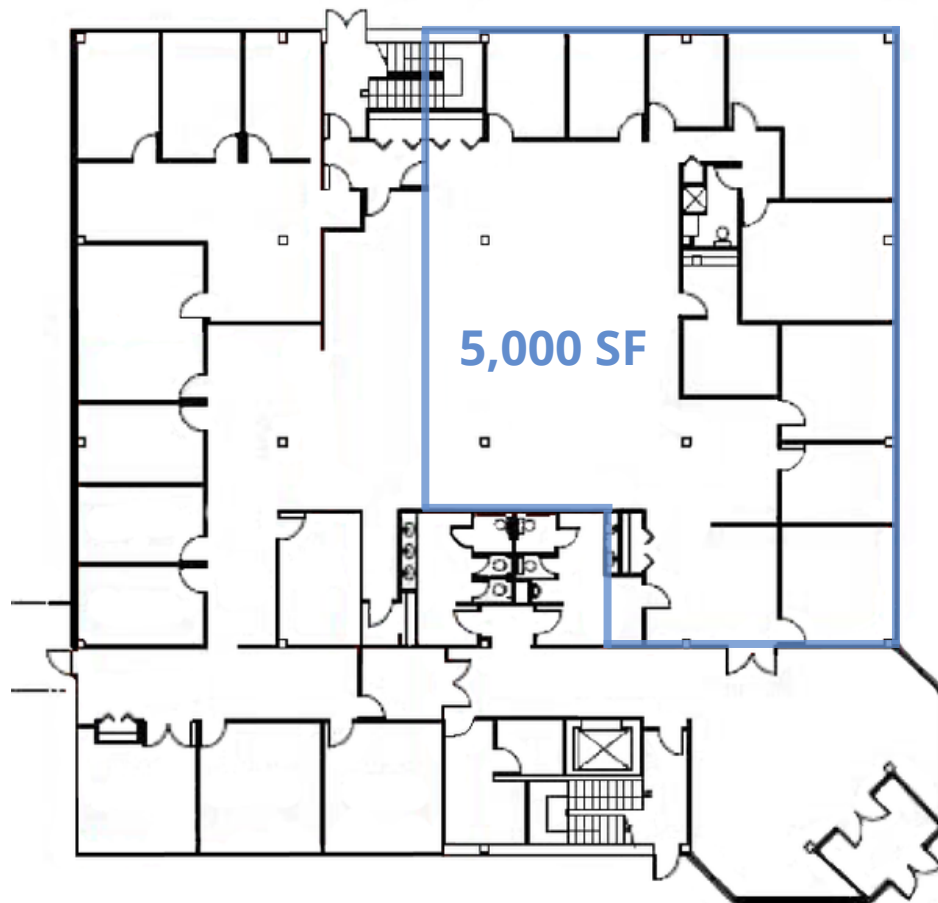
MARLTON, NJ | PHILADELPHIA, PA

## 1934 Olney Ave | Cherry Hill, NJ

- +/- 5,000 SF
- Ideal for professional office user
- 7 perimeter offices with bullpen open floor plan
- Wall to floor windowed conference room
- Kitchenette & bathroom
- Common Area
- Abundant parking
- Easy access to I-295 and Routes 70 and 73

## FLOOR PLANS

### FIRST FLOOR





# ADDITIONAL PICTURES



## CONTACT

Bethany Brown  
Vice President  
856.857.6396  
[bethany.brown@wolfcre.com](mailto:bethany.brown@wolfcre.com)

The foregoing information was furnished to us by sources which we deem to be reliable, but no warranty or representation is made as to the accuracy thereof. Subject to correction of errors, omissions, change of price, prior sale or withdrawal from market without notice.