



**PROMINENT MEDICAL/OFFICE CONDO AVAILABLE**



**525 S. ROUTE 73 | MARLTON, NJ**



**Wolf Commercial Real Estate**  
**[www.WolfCRE.com](http://www.WolfCRE.com)**





## PROPERTY DESCRIPTION

<b>Location</b>	525 Route 73 Suites 302-303 Marlton, NJ 08053
<b>Size / SF Available</b>	+/- 5,000 -10,000 SF Available for Sale or Lease
<b>Sale / Lease Price</b>	Call for information
<b>Property / Area Description</b>	<ul style="list-style-type: none"> <li>• Available for Sale or Lease</li> <li>• Former Orthopedic Practice</li> <li>• Medical buildout</li> <li>• 10+ private offices</li> <li>• Elevator Served Building</li> <li>• Ample Parking &amp; ADA Compliant</li> <li>• Situated near The Promenade at Sagemore and surrounded by high-end retailers and restaurants</li> <li>• Rare two-unit opportunity</li> <li>• Ideal for User/Investor</li> <li>• Directly accessible to Route 73 and Evesham Road</li> <li>• Minutes from Virtua Hospital</li> <li>• Easy access to route 70, I-295 and the NJ Turnpike</li> </ul>



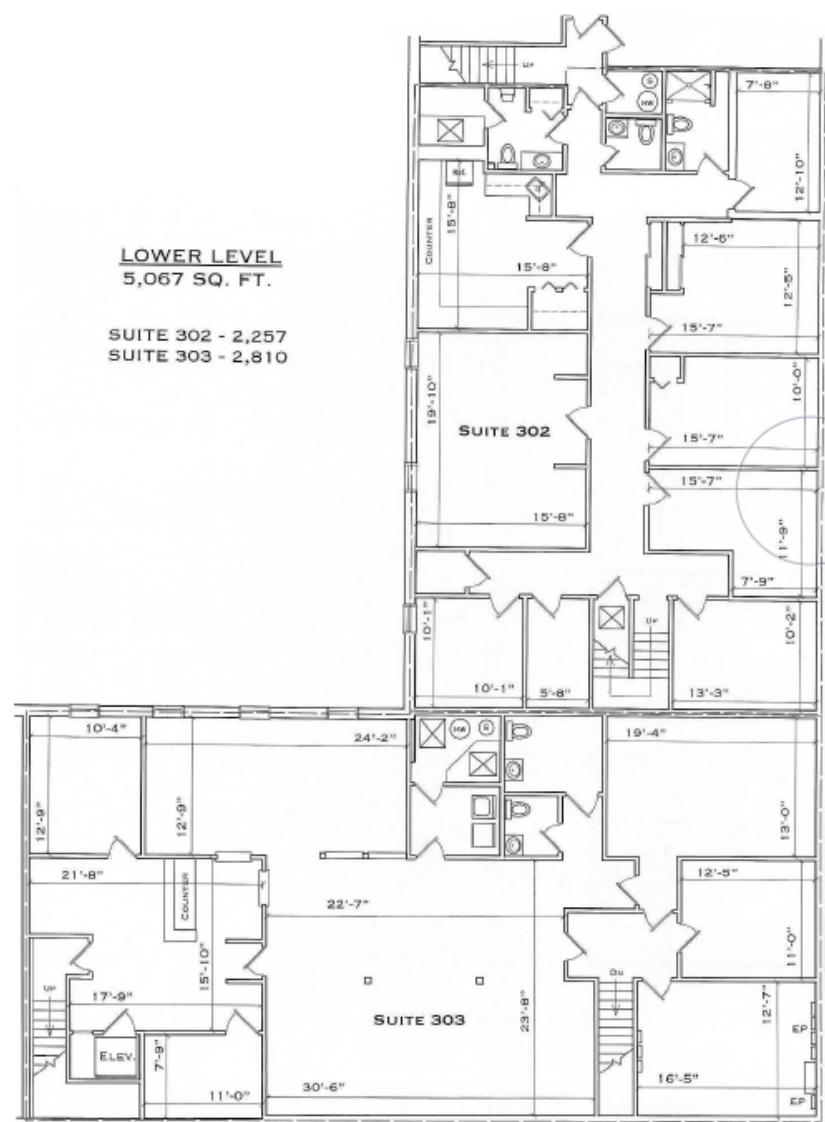
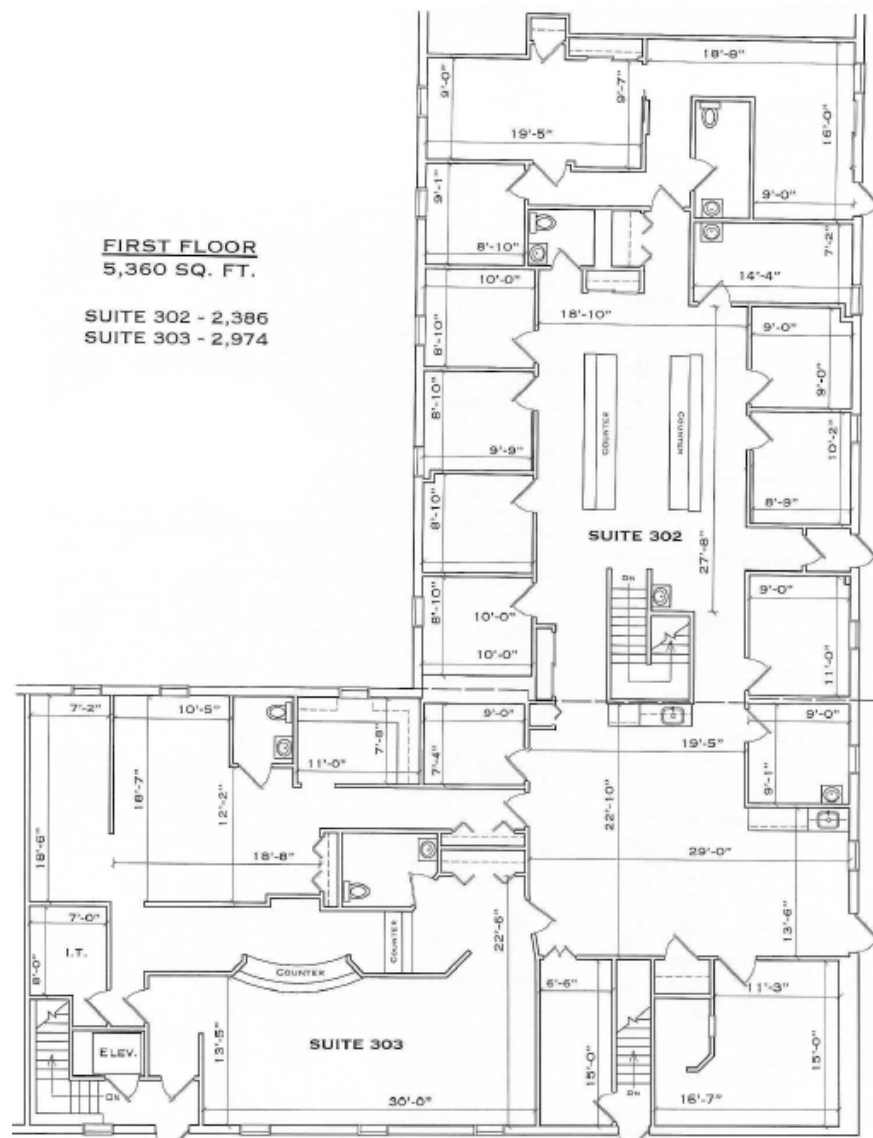
## Contact Us

Bethany Brown  
Vice President  
267.226.6602  
bethany.brown@wolfcre.com

follow us:    

The foregoing information was furnished to us by sources which we deem to be reliable, but no warranty or representation is made as to the accuracy thereof. Subject to correction of errors, omissions, change of price, prior sale or withdrawal from market without notice.

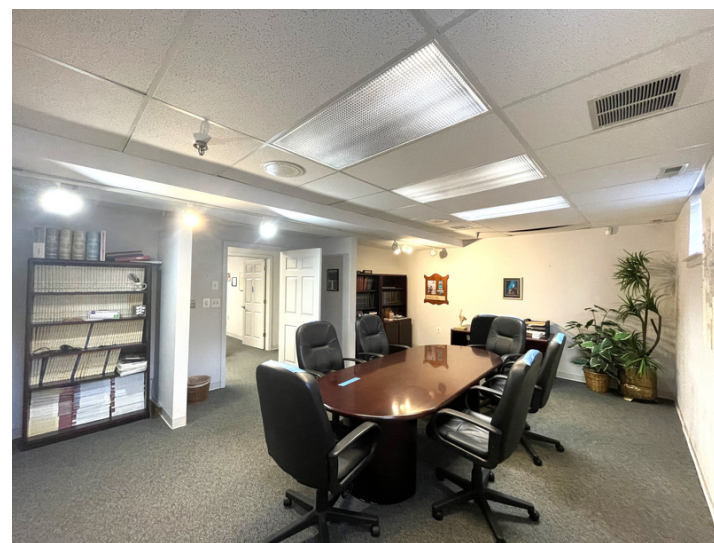
## FLOOR PLANS



The foregoing information was furnished to us by sources which we deem to be reliable, but no warranty or representation is made as to the accuracy thereof. Subject to correction of errors, omissions, change of price, prior sale or withdrawal from market without notice.



**ADDITIONAL IMAGES**



The foregoing information was furnished to us by sources which we deem to be reliable, but no warranty or representation is made as to the accuracy thereof. Subject to correction of errors, omissions, change of price, prior sale or withdrawal from market without notice.