

# MEDICAL OFFICE SPACE FOR LEASE



## 811 SUNSET ROAD BURLINGTON, NJ



**Evan Zweben**  
Executive Vice President  
856.261.5548  
[evan.zweben@wolfcre.com](mailto:evan.zweben@wolfcre.com)

The foregoing information was furnished to us by sources which we deem to be reliable, but no warranty or representation is made as to the accuracy thereof.  
Subject to correction of errors, omissions, change of price, prior sale or withdrawal from market without notice.



**Wolf Commercial Real Estate**  
**[www.WolfCRE.com](http://www.WolfCRE.com)**



## PROPERTY DESCRIPTION

**Location:** 811 Sunset Road  
Burlington, NJ 08016

**Size/SF Available:** Suite 104: +/- 842 SF  
Suite 102: +/- 3,564 SF

**Lease Price:** Call for information

**Signage:** Monument Signage  
on Sunset Road

## PROPERTY AREA/HIGHLIGHTS

- Single story medical office building
- Strong local ownership and property management
- Join Virtua Health, Labcorp, and Dorfner Dental
- Less than one (1) mile to Virtua's Willingboro Campus
- Acuity's Specialty Hospital, Cooper Health, and Larchmont Imaging located on same corridor

## SIGNAGE

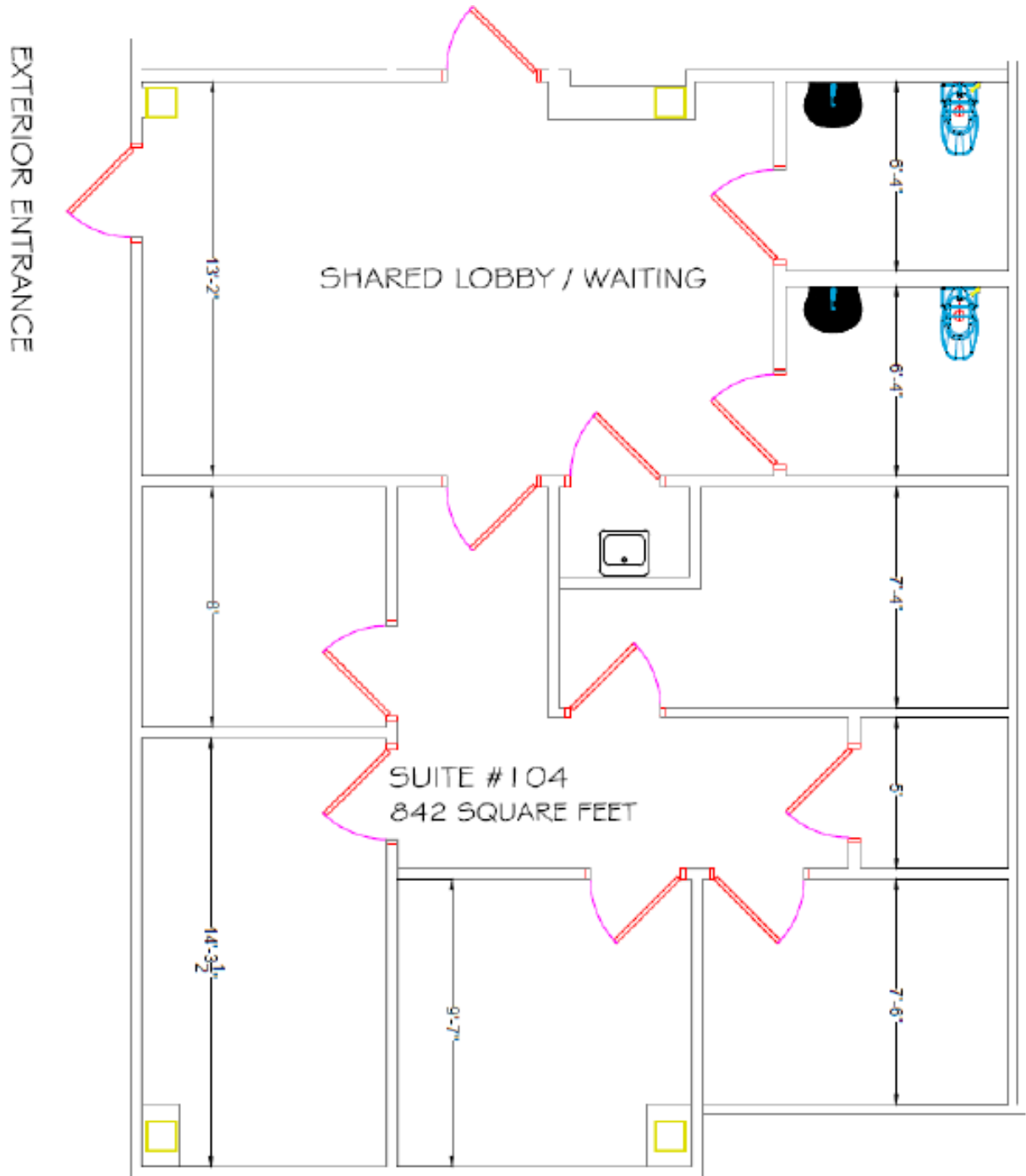


## AERIAL MAP

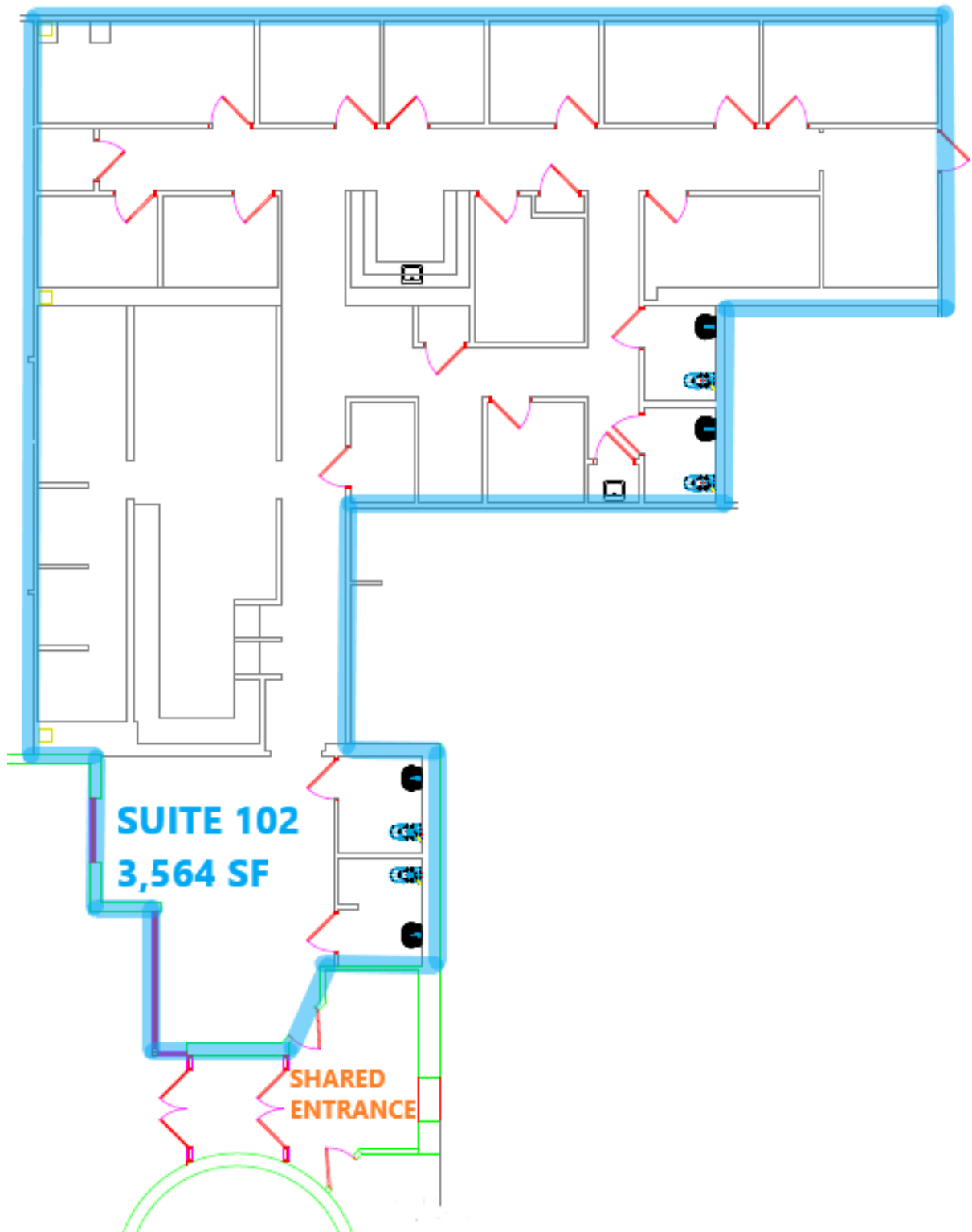


The foregoing information was furnished to us by sources which we deem to be reliable, but no warranty or representation is made as to the accuracy thereof. Subject to correction of errors, omissions, change of price, prior sale or withdrawal from market without notice.

**FLOOR PLANS**



The foregoing information was furnished to us by sources which we deem to be reliable, but no warranty or representation is made as to the accuracy thereof. Subject to correction of errors, omissions, change of price, prior sale or withdrawal from market without notice.

**FLOOR PLANS**

The foregoing information was furnished to us by sources which we deem to be reliable, but no warranty or representation is made as to the accuracy thereof.  
Subject to correction of errors, omissions, change of price, prior sale or withdrawal from market without notice.