

MEDICAL OFFICE SPACE FOR LEASE



**811 SUNSET ROAD
BURLINGTON, NJ**



Evan Zweben
Executive Vice President
856.261.5548
evan.zweben@wolfcre.com

The foregoing information was furnished to us by sources which we deem to be reliable, but no warranty or representation is made as to the accuracy thereof. Subject to correction of errors, omissions, change of price, prior sale or withdrawal from market without notice.



Wolf Commercial Real Estate
www.WolfCRE.com



PROPERTY DESCRIPTION

Location:	811 Sunset Road Burlington, NJ 08016
Size/SF Available:	Suite 102: +/-3,564 SF
Lease Price:	Call for information
Signage:	Monument Signage on Sunset Road

PROPERTY AREA/HIGHLIGHTS

- Single story medical office building
- Strong local ownership and property management
- Join Virtua Health, Labcorp, and Dorfner Dental
- Less than one (1) mile to Virtua's Willingboro Campus
- Acuity's Specialty Hospital, Cooper Health, and Larchmont Imaging located on same corridor

SIGNAGE

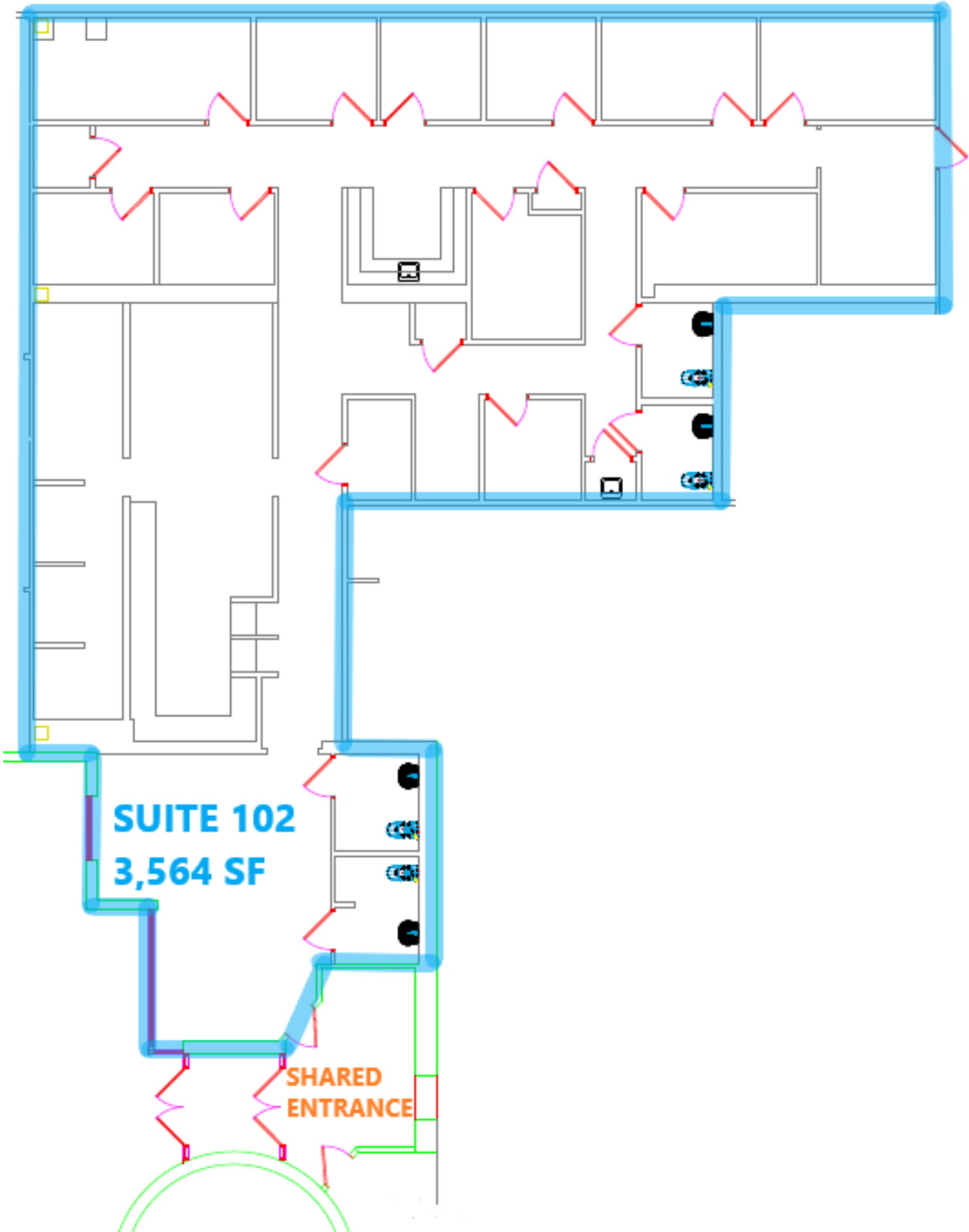


AERIAL MAP



The foregoing information was furnished to us by sources which we deem to be reliable, but no warranty or representation is made as to the accuracy thereof. Subject to correction of errors, omissions, change of price, prior sale or withdrawal from market without notice.

FLOOR PLANS



The foregoing information was furnished to us by sources which we deem to be reliable, but no warranty or representation is made as to the accuracy thereof. Subject to correction of errors, omissions, change of price, prior sale or withdrawal from market without notice.