

# PREMIER BUILD-TO-SUIT FLEX/INDUSTRIAL BUILDING



## 648 LOWER LANDING ROAD BLACKWOOD, NJ



**Ryan Barikian**  
Vice President  
856 383 5355  
[ryan.barikian@wolfcre.com](mailto:ryan.barikian@wolfcre.com)

The foregoing information was furnished to us by sources which we deem to be reliable, but no warranty or representation is made as to the accuracy thereof. Subject to correction of errors, omissions, change of price, prior sale or withdrawal from market without notice.



**Wolf Commercial Real Estate**  
[www.WolfCRE.com](http://www.WolfCRE.com)



## PROPERTY DESCRIPTION

**Location:** 648 Lower Landing Road  
Blackwood, NJ 08012

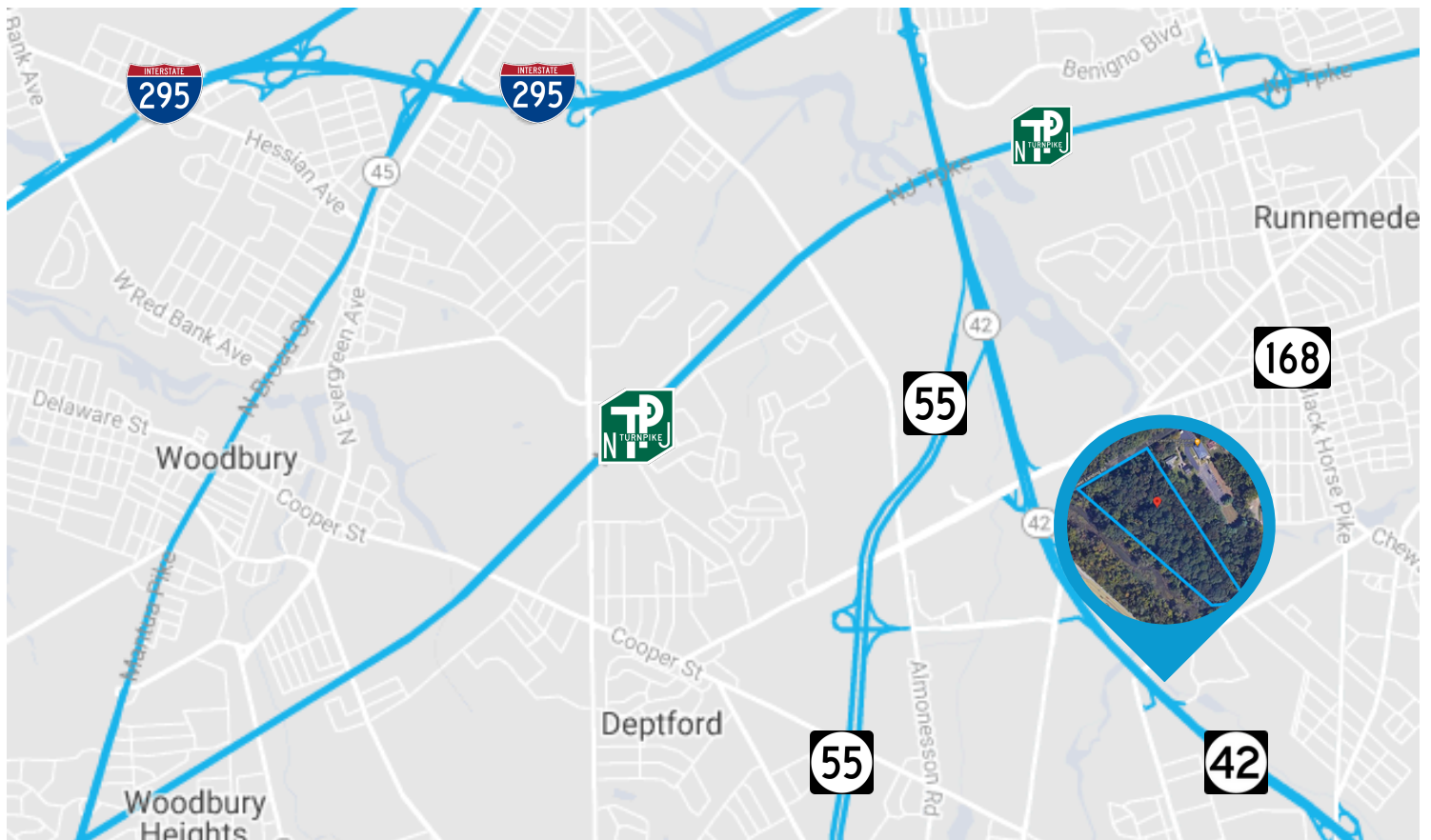
**Size/SF Available:** +/- 34,000 SF

**Sale/Lease Price:** Call For Information

## PROPERTY AREA/HIGHLIGHTS

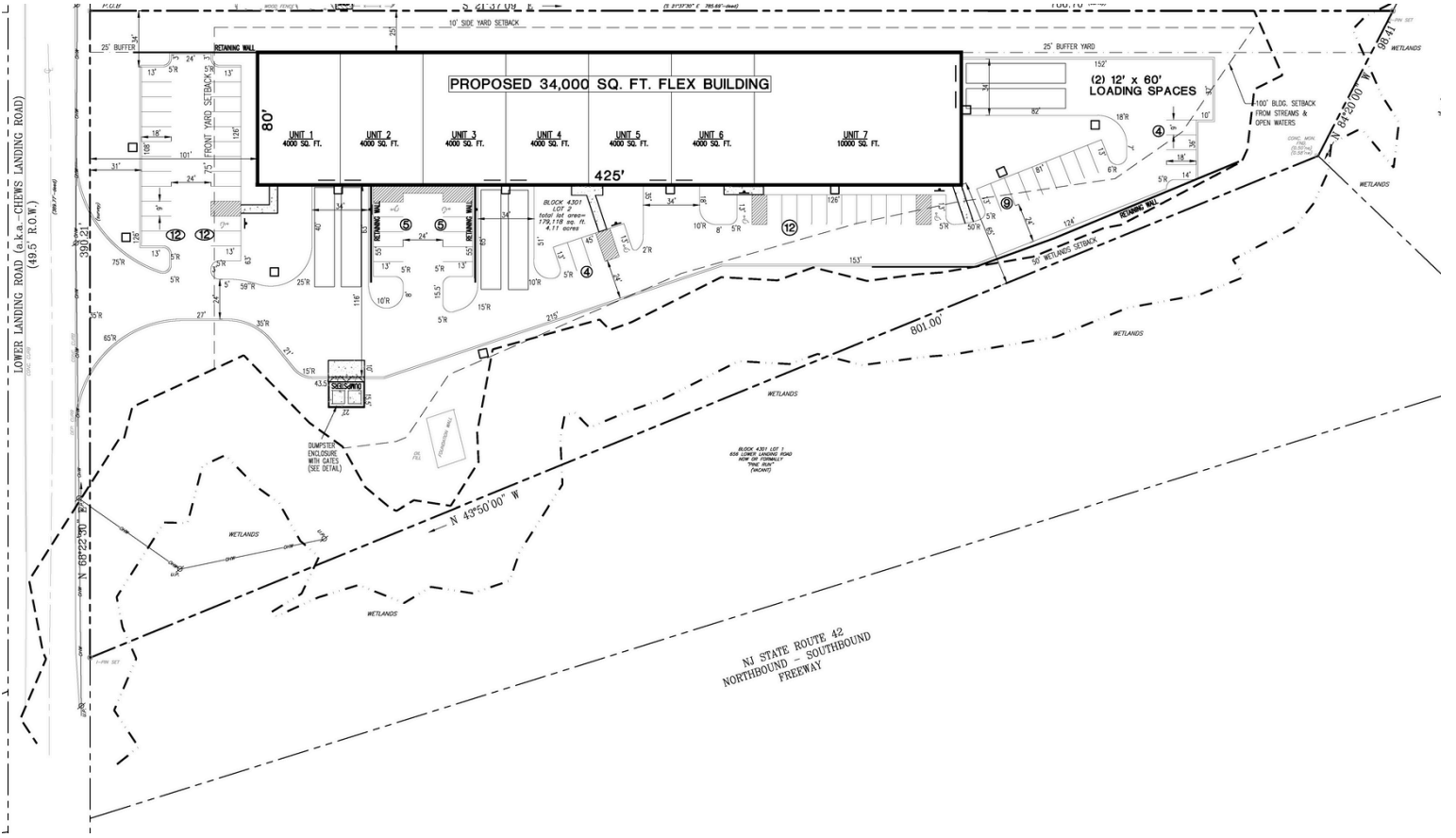
- Built-to-suit flex building
- Proposed (6) 4,000 SF flex units and (1) 10,000 SF flex unit
- Proposed 8 loading docks
- Situated on +/- 6.9 acres
- Minutes from Route 42/AC Expressway and Route 168/Black Horse Pike
- Close proximity to NJ Turnpike, I-295, and Route 55

### Aerial Map:



The foregoing information was furnished to us by sources which we deem to be reliable, but no warranty or representation is made as to the accuracy thereof. Subject to correction of errors, omissions, change of price, prior sale or withdrawal from market without notice.

## Site Plan:



The foregoing information was furnished to us by sources which we deem to be reliable, but no warranty or representation is made as to the accuracy thereof. Subject to correction of errors, omissions, change of price, prior sale or withdrawal from market without notice.