



OFFICE/LAB SPACE AVAILABLE FOR LEASE



2200 GARRY ROAD | CINNAMINSON, NJ



Wolf Commercial Real Estate
www.WolfCRE.com



PROPERTY DESCRIPTION

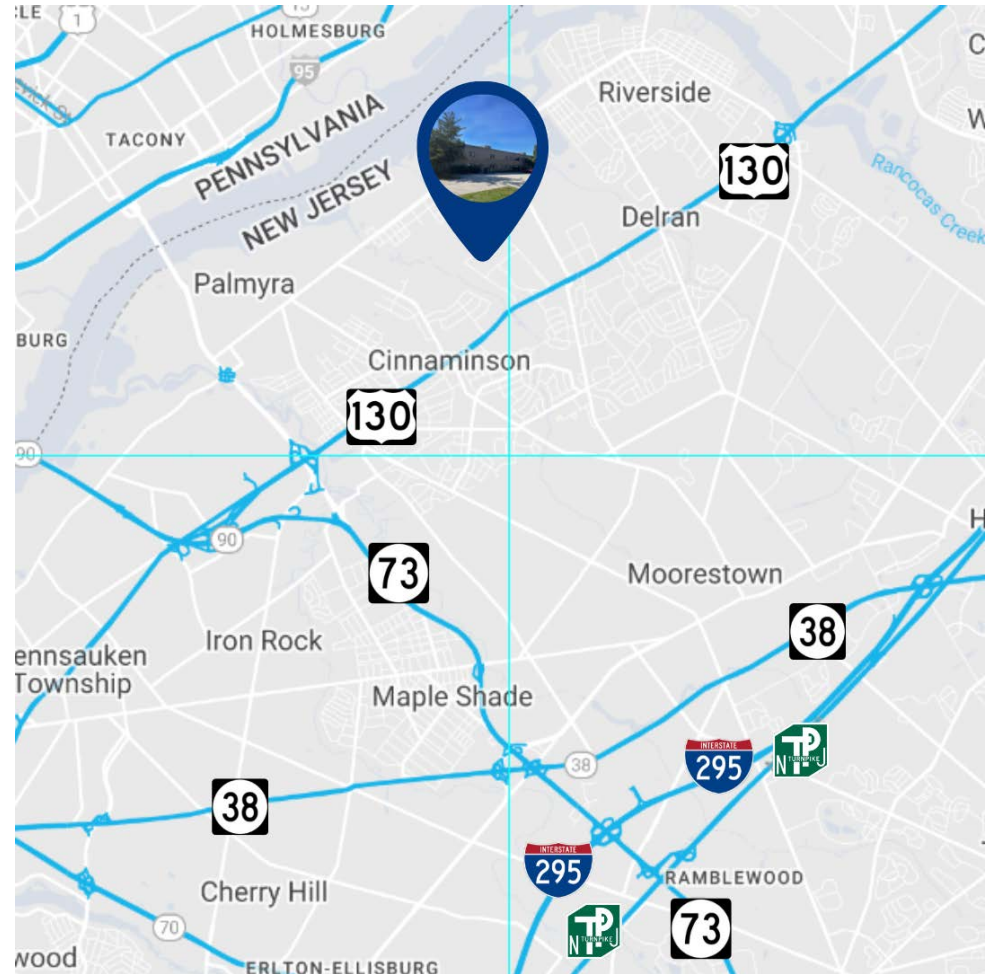
- Location** 2200 Garry Road
Cinnaminson, NJ 08077
- Size / SF Available** +/- 5,000 SF
- +/- 2,500 SF Office
 - +/- 2,500 SF Lab Space
- Lease Price** Call for information
- Property / Area Description**
- Available for immediate occupancy
 - Ideal for general lab or life science users
 - One (1) ISO clean room labs
 - Two (2) Negative pressure labs
 - Ample parking
 -
 -

| BRIDGES | MILEAGE |
|---------------------------|------------|
| Tacony-Palmyra Bridge | 5.4 miles |
| Burlington-Bristol Bridge | 10 miles |
| Ben Franklin Bridge | 10.4 miles |
| Walt Whitman Bridge | 12.3 miles |

| ROUTES | MILEAGE |
|-------------|-----------|
| Route 130 | 1 mile |
| Route 73 | 3.3 miles |
| I-295 | 7.2 miles |
| NJ Turnpike | 7.2 miles |

Contact Us

Bethany Brown
Vice President
267.226.6602
bethany.brown@wolfcre.com

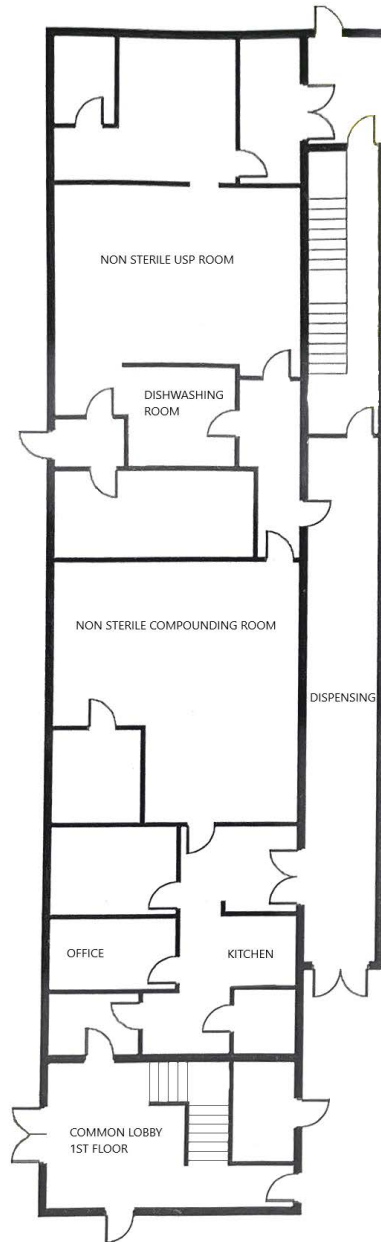


follow us:    

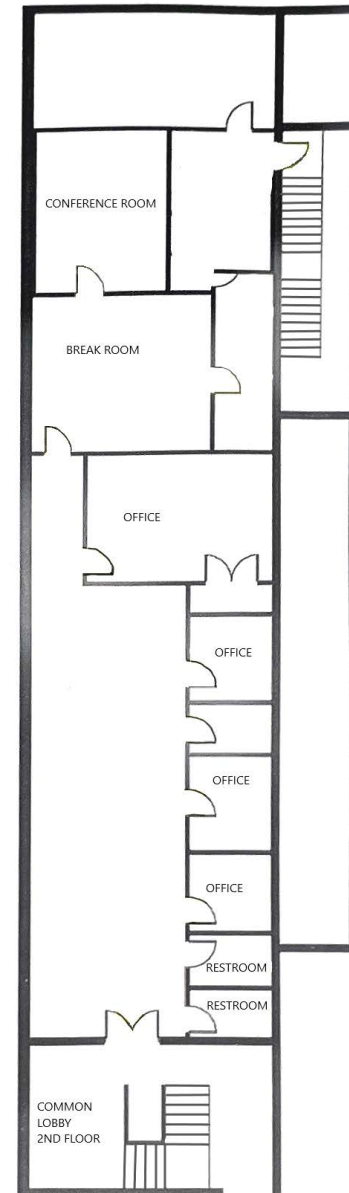
The foregoing information was furnished to us by sources which we deem to be reliable, but no warranty or representation is made as to the accuracy thereof. Subject to correction of errors, omissions, change of price, prior sale or withdrawal from market without notice.

FLOOR PLAN

FIRST FLOOR



SECOND FLOOR



The foregoing information was furnished to us by sources which we deem to be reliable, but no warranty or representation is made as to the accuracy thereof. Subject to correction of errors, omissions, change of price, prior sale or withdrawal from market without notice.

ADDITIONAL IMAGES



The foregoing information was furnished to us by sources which we deem to be reliable, but no warranty or representation is made as to the accuracy thereof. Subject to correction of errors, omissions, change of price, prior sale or withdrawal from market without notice.