

1711 HANCOCK LANE | BURLINGTON, NJ

PROPERTY DESCRIPTION

Location 11711 Hancock Lane
Burlington, NJ 08016

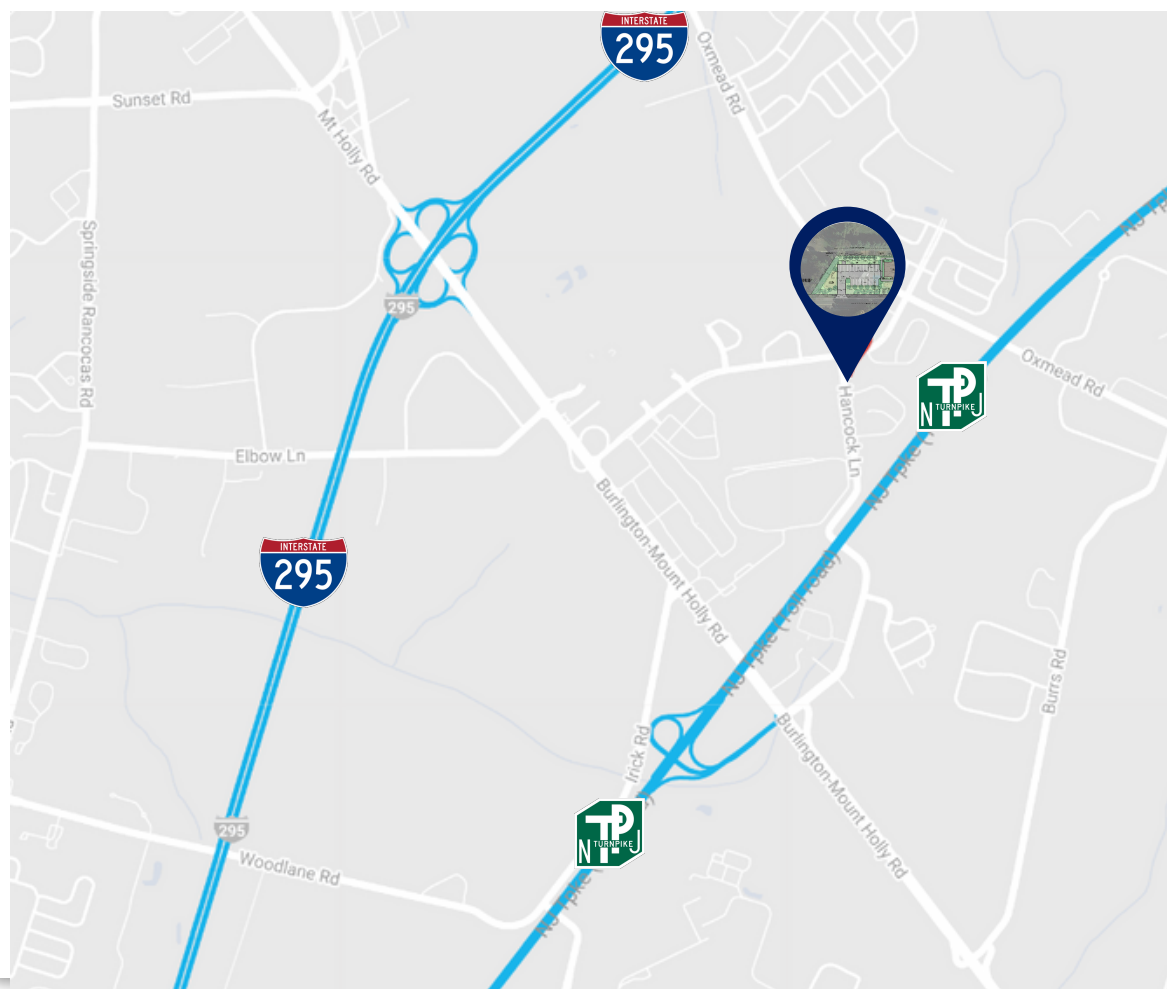
Size / SF Available +/- 10,000 SF

Sale / Lease Price Call for information

- Property / Area Description**
- Built-to-suit two story office building
 - Ideal for medical/professional office users
 - Located on the corner of Bromley Road and Hancock Lane
 - Situated on +/- .82 acres
 - Easy access to Burlington-Mount Holly Road, NJ Turnpike & I-295
 - Close proximity to various retailers, restaurants and hotels
 - Close proximity to multiple new industrial and residential developments

Contact Us

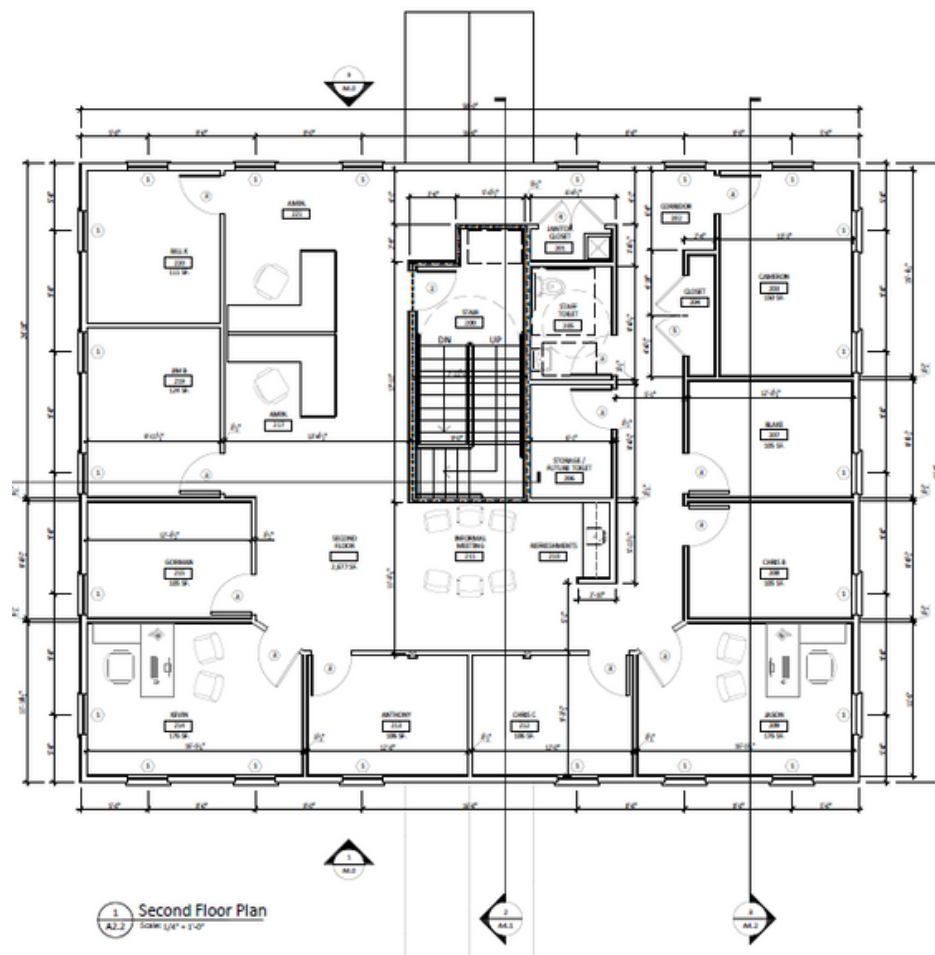
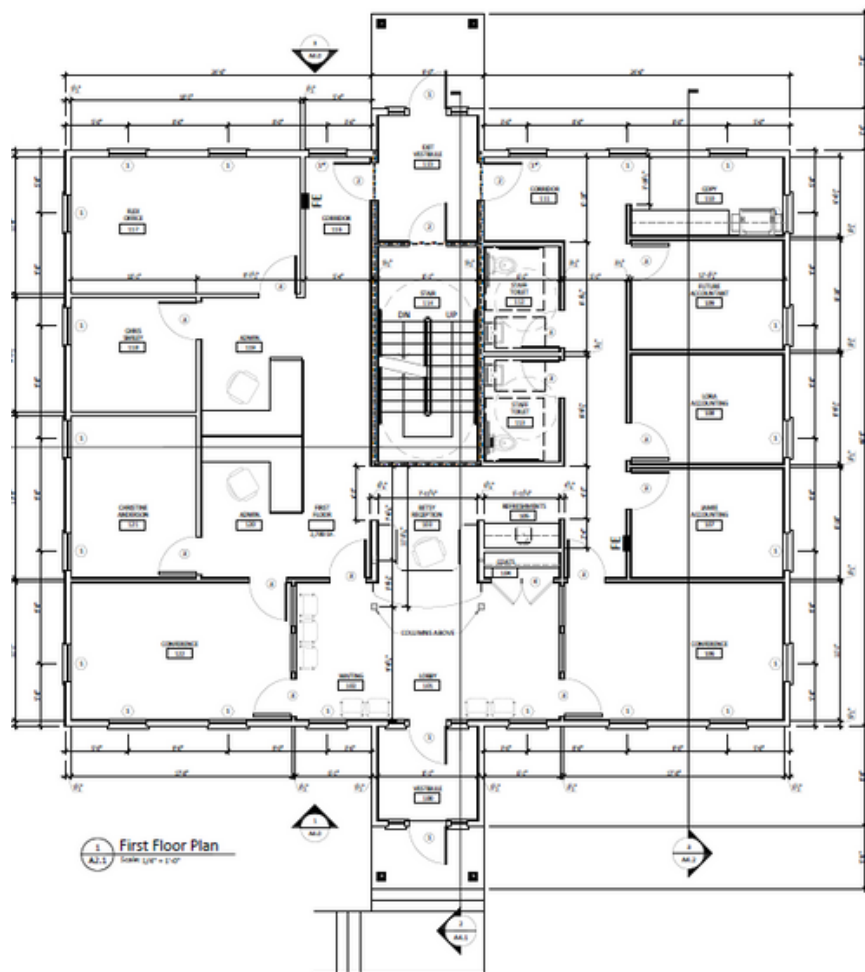
Ryan Barikian
Vice President
856.383.5355
ryan.barikian@wolfcre.com



follow us:    

The foregoing information was furnished to us by sources which we deem to be reliable, but no warranty or representation is made as to the accuracy thereof. Subject to correction of errors, omissions, change of price, prior sale or withdrawal from market without notice.

PROPOSED FLOOR PLANS



The foregoing information was furnished to us by sources which we deem to be reliable, but no warranty or representation is made as to the accuracy thereof. Subject to correction of errors, omissions, change of price, prior sale or withdrawal from market without notice.