



PROMINENT OFFICE SUITES AVAILABLE FOR LEASE IN MOORESTOWN



302 HARPER DRIVE | MOORESTOWN, NJ



Wolf Commercial Real Estate
www.WolfCRE.com



PROPERTY DESCRIPTION

Location 302 Harper Drive
Moorestown, NJ 08057

Size / SF Available

First Floor

- Suite 101: 2,965 SF
- Suite 102: 3,979 SF
- * 6,944 SF Contiguous

Second Floor

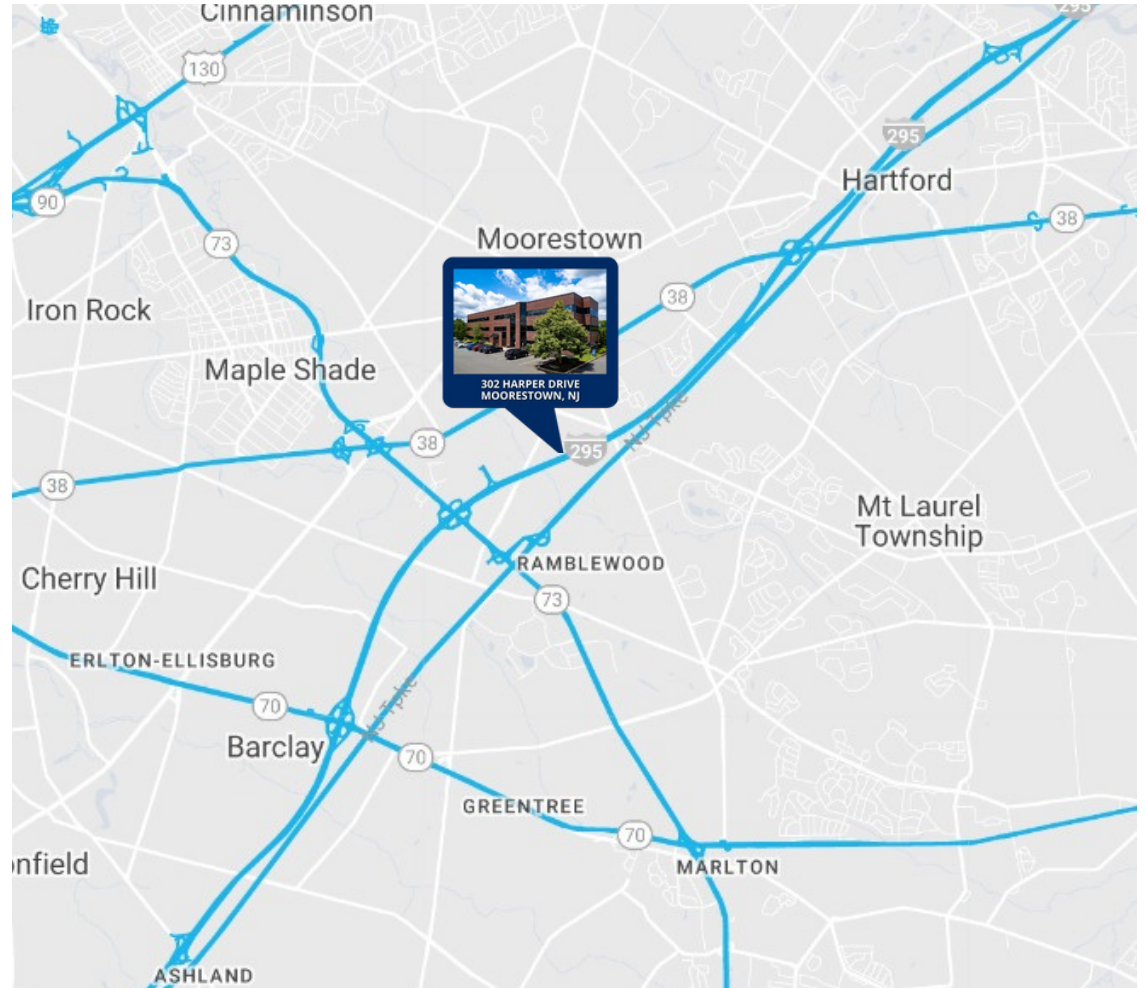
- Suite 200: 7,703 SF
- Suite 205: 4,190 SF
- * 11,893 SF Contiguous

Lease Price \$20.00/per SF + utilities

- Property / Area Description**
- +/- 36,232 SF office building situated on 2.2 acres
 - Corporate neighbors include Freedom Mortgage, PCS, Conrail and Oracle
 - Ample parking
 - Easy access to Route 38, I-295 and NJ Turnpike
 - Adjacent to the Moorestown Mall and East Gate Square
 - Situated near various professional offices, retailers, and restaurants

Contact Us

Evan Zweben
Executive Vice President
856.261.5548
evan.zweben@wolfcre.com

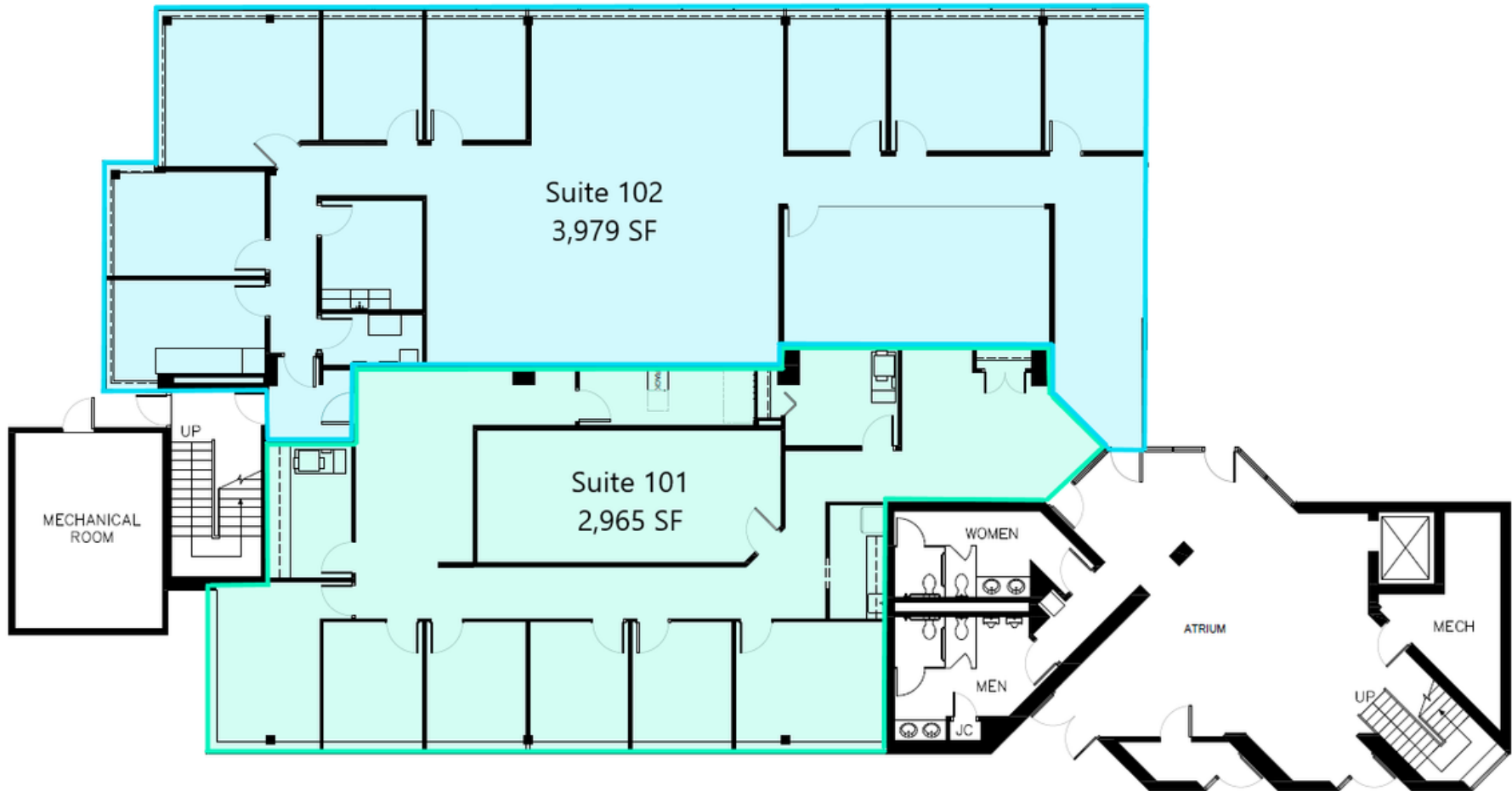


follow us:    

The foregoing information was furnished to us by sources which we deem to be reliable, but no warranty or representation is made as to the accuracy thereof. Subject to correction of errors, omissions, change of price, prior sale or withdrawal from market without notice.

FLOOR PLANS

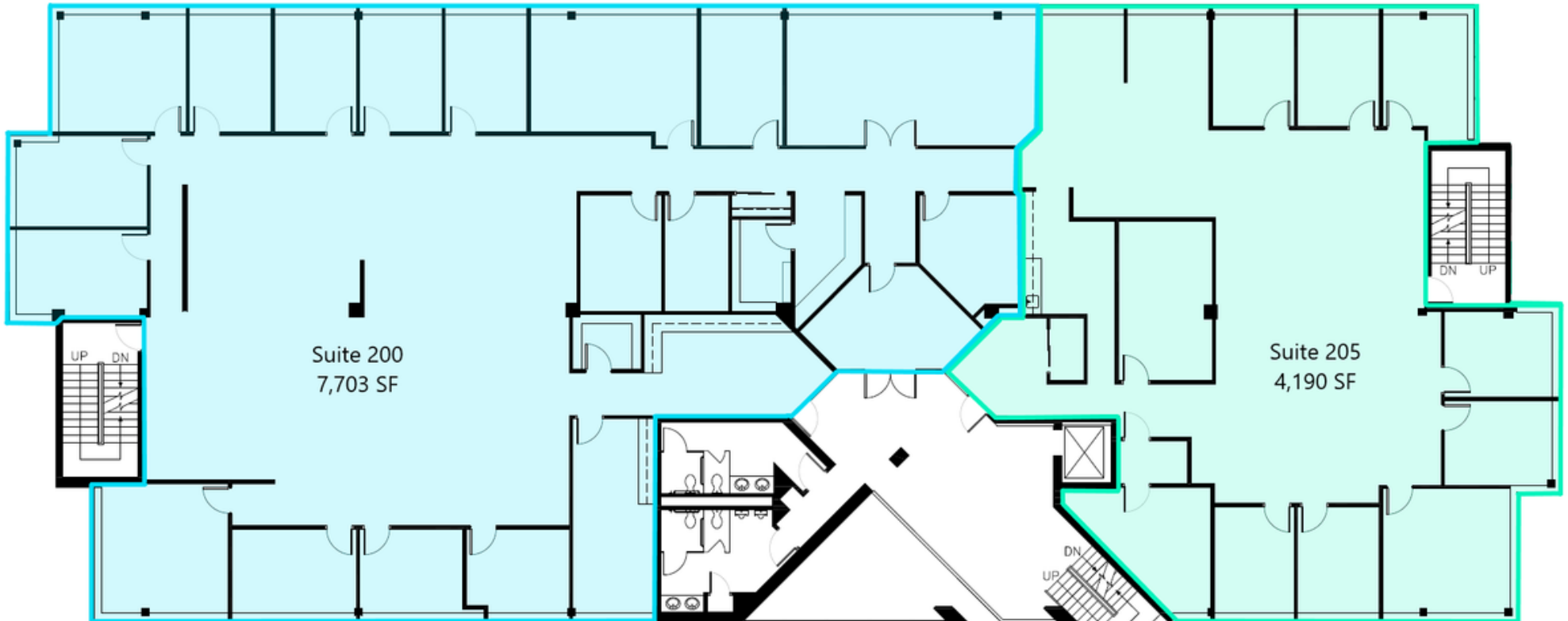
First Floor



The foregoing information was furnished to us by sources which we deem to be reliable, but no warranty or representation is made as to the accuracy thereof. Subject to correction of errors, omissions, change of price, prior sale or withdrawal from market without notice.

FLOOR PLANS

Second Floor



The foregoing information was furnished to us by sources which we deem to be reliable, but no warranty or representation is made as to the accuracy thereof. Subject to correction of errors, omissions, change of price, prior sale or withdrawal from market without notice.