



1155 MARLKRESS ROAD | CHERRY HILL, NJ

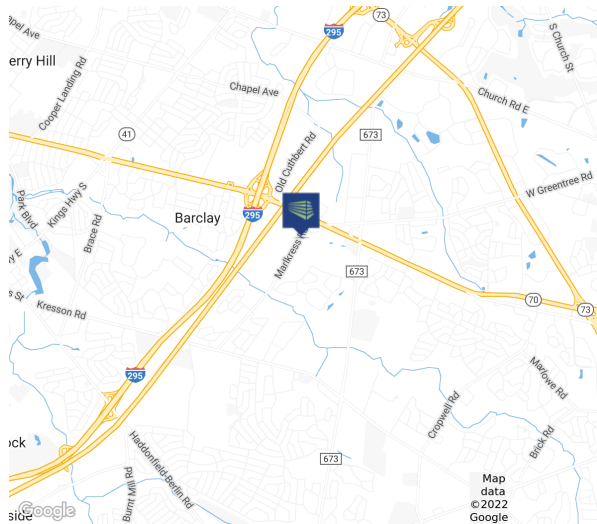
## PROPERTY DESCRIPTION

**Location** 1155 Markkress Road  
Cherry Hill, NJ 08003

**Size / SF Available** +/- 8,703 SF

**Sale / Lease Price** Call for information

- Property / Area Description**
- Office building situated on .83 acres
  - Ideal for medical/professional office users
  - Ample parking
  - Easy access to Route 70
  - Close proximity to I-295 and NJ Turnpike



## Contact Us

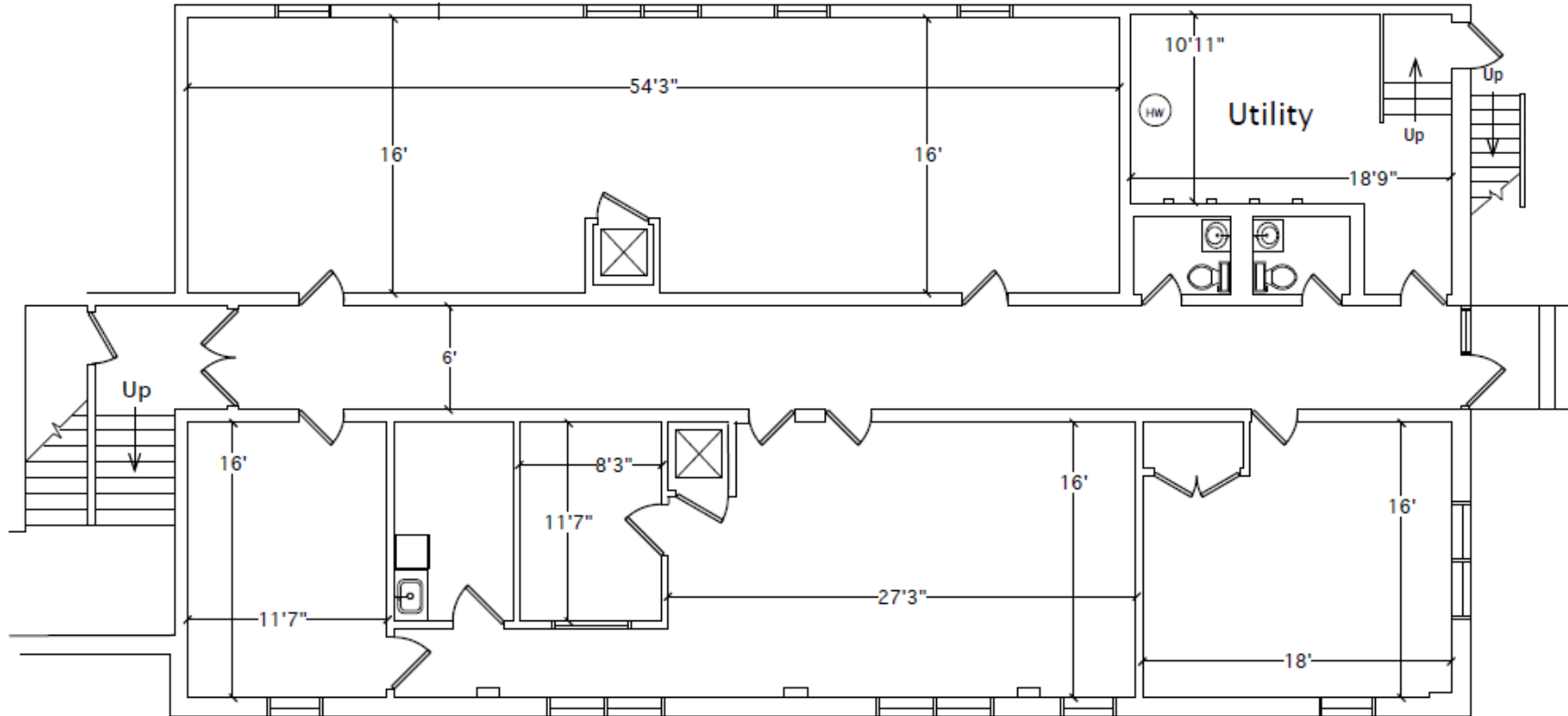
Evan Zweben  
Executive Vice President  
856.261.5548  
evan.zweben@wolfcre.com

follow us:    

The foregoing information was furnished to us by sources which we deem to be reliable, but no warranty or representation is made as to the accuracy thereof. Subject to correction of errors, omissions, change of price, prior sale or withdrawal from market without notice.

FLOOR PLANS

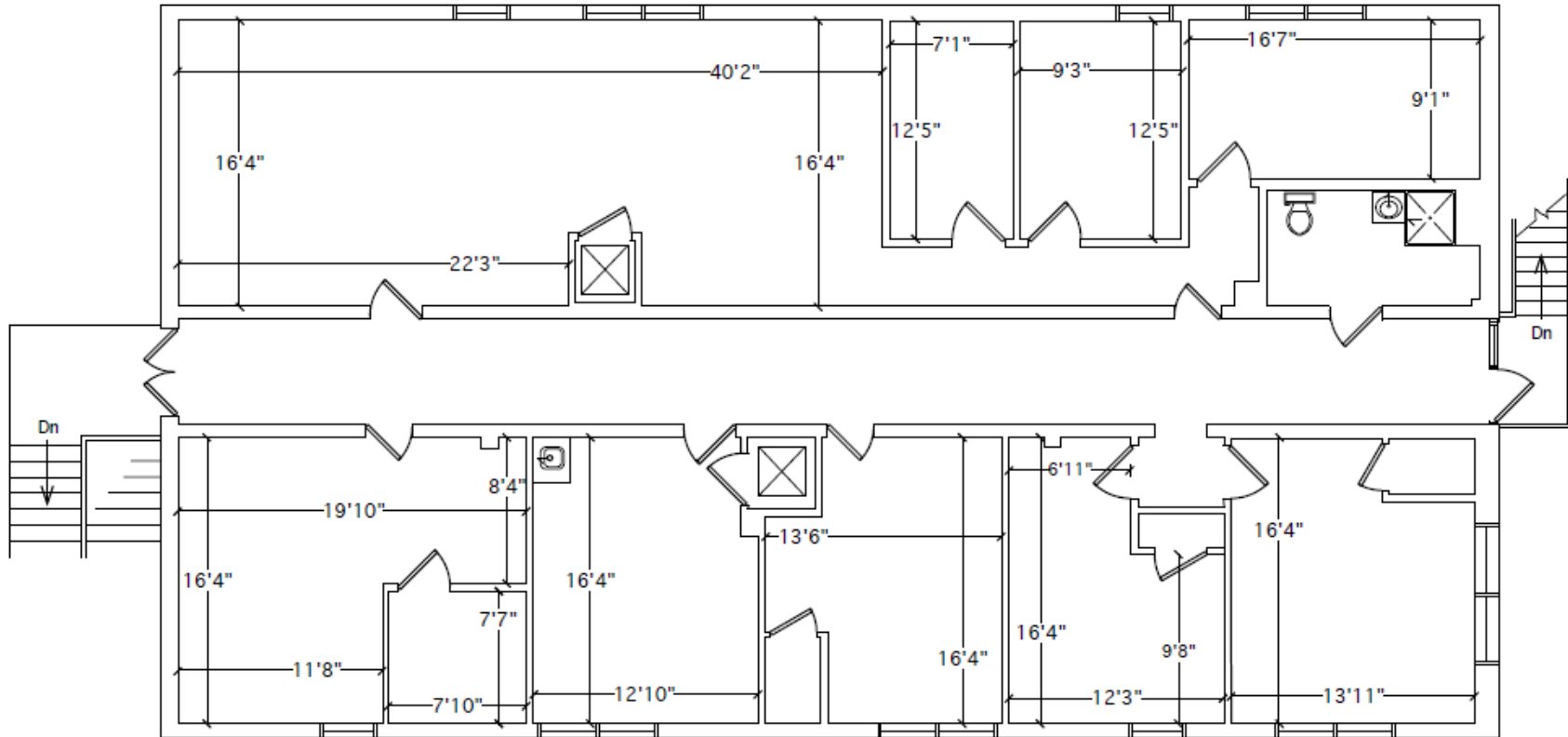
FIRST FLOOR  
3,214 SF



The foregoing information was furnished to us by sources which we deem to be reliable, but no warranty or representation is made as to the accuracy thereof. Subject to correction of errors, omissions, change of price, prior sale or withdrawal from market without notice.

FLOOR PLANS

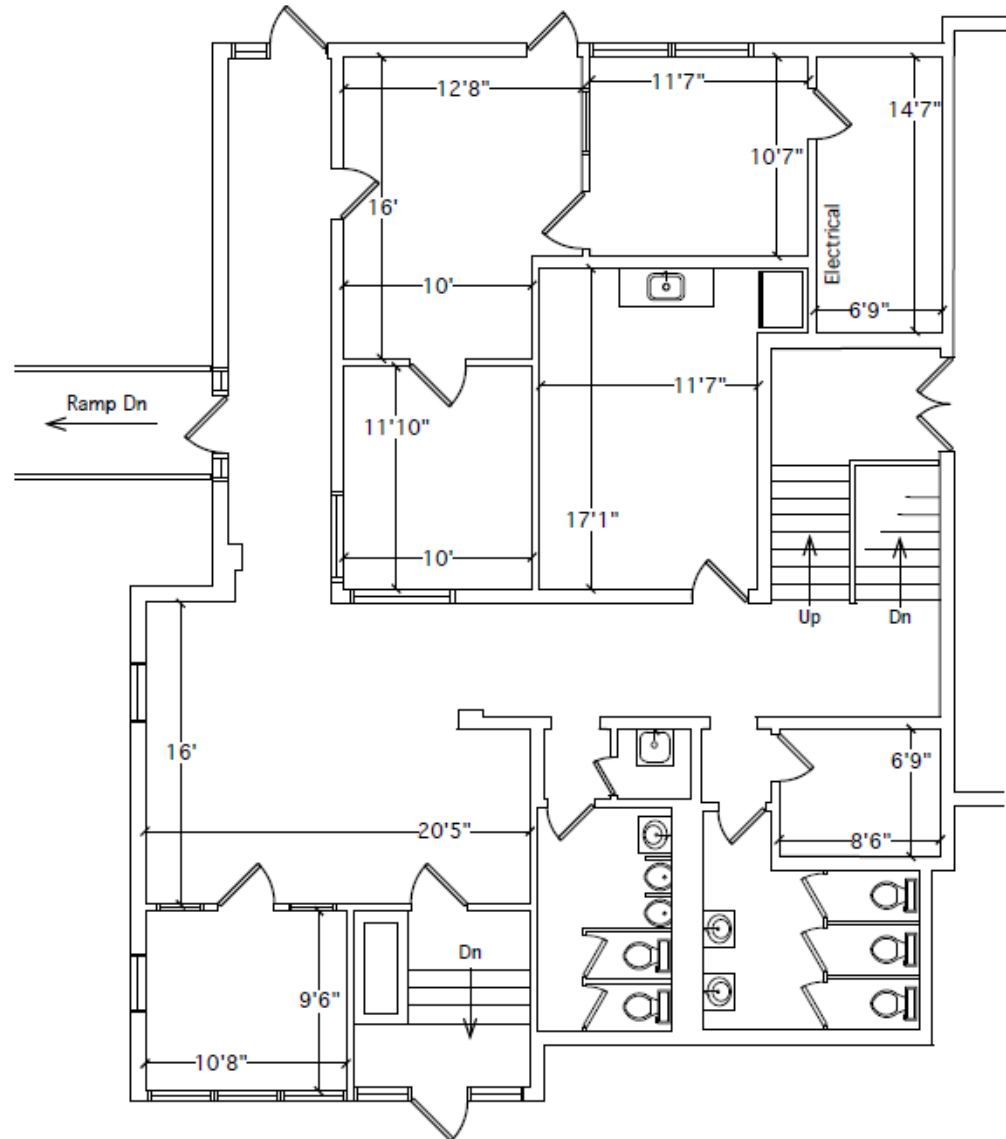
SECOND FLOOR  
3,214 SF



The foregoing information was furnished to us by sources which we deem to be reliable, but no warranty or representation is made as to the accuracy thereof. Subject to correction of errors, omissions, change of price, prior sale or withdrawal from market without notice.

FLOOR PLANS

MID-LEVEL FLOOR  
2,275 SF



The foregoing information was furnished to us by sources which we deem to be reliable, but no warranty or representation is made as to the accuracy thereof. Subject to correction of errors, omissions, change of price, prior sale or withdrawal from market without notice.