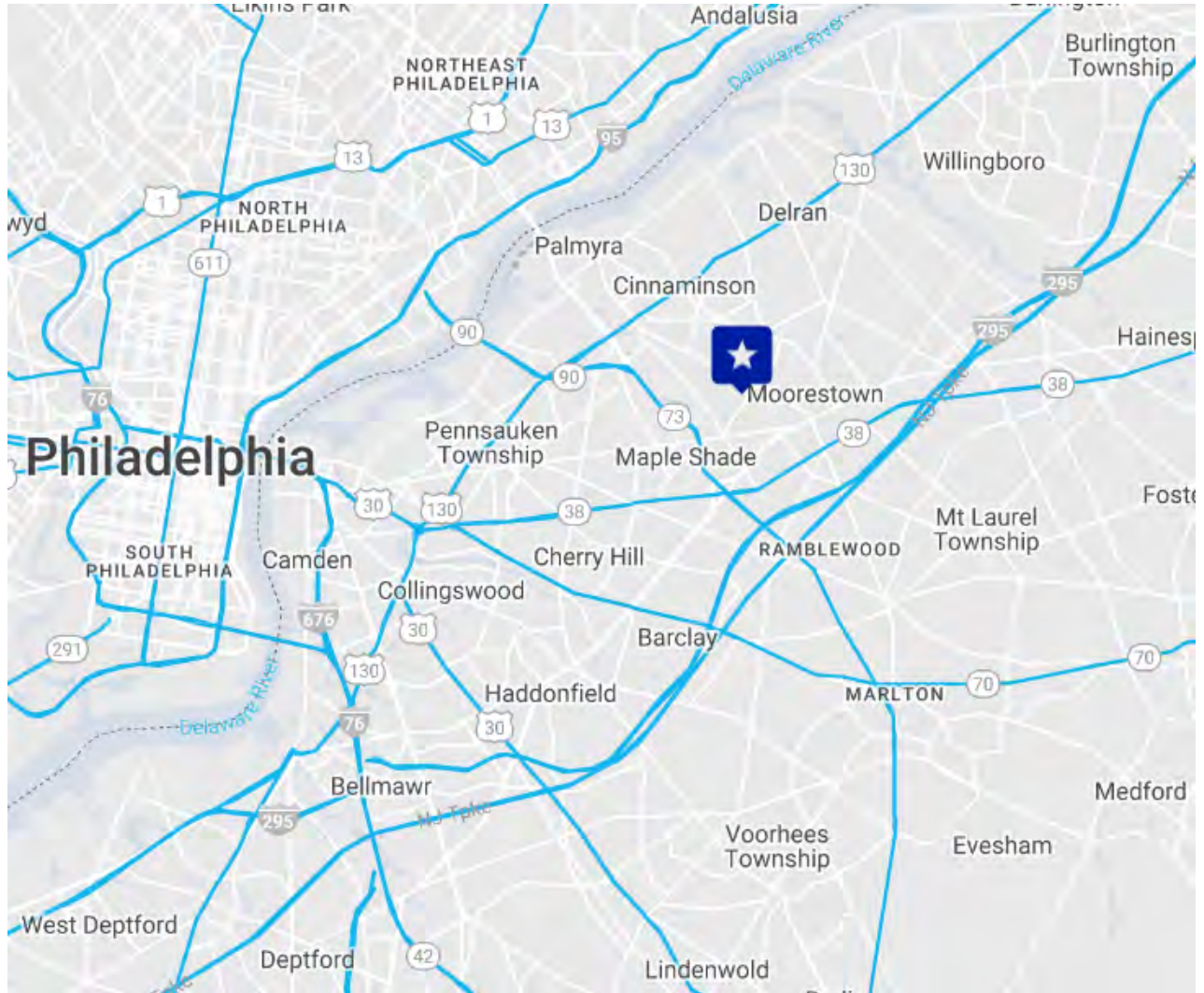




1249 GLEN AVENUE | MOORESTOWN, NJ

PROPERTY DESCRIPTION

Address	1249 Glen Avenue Moorestown, NJ 08057
Size	+/- 7,366 SF <ul style="list-style-type: none"> • Office: TBD • Warehouse: TBD
Loading Dock	(2) 8'x10' Dock doors with levelers
Drive-in	(1) 10'x12'
Call for information	Call for information
Features	<ul style="list-style-type: none"> • 23.5' Clear height • 240/480v 3-phase power • 6" reinforced concrete flooring • Warehouse is heated and air-conditioned • 12 car parking spaces • Zoned BP-1 • Q4 2022 occupancy

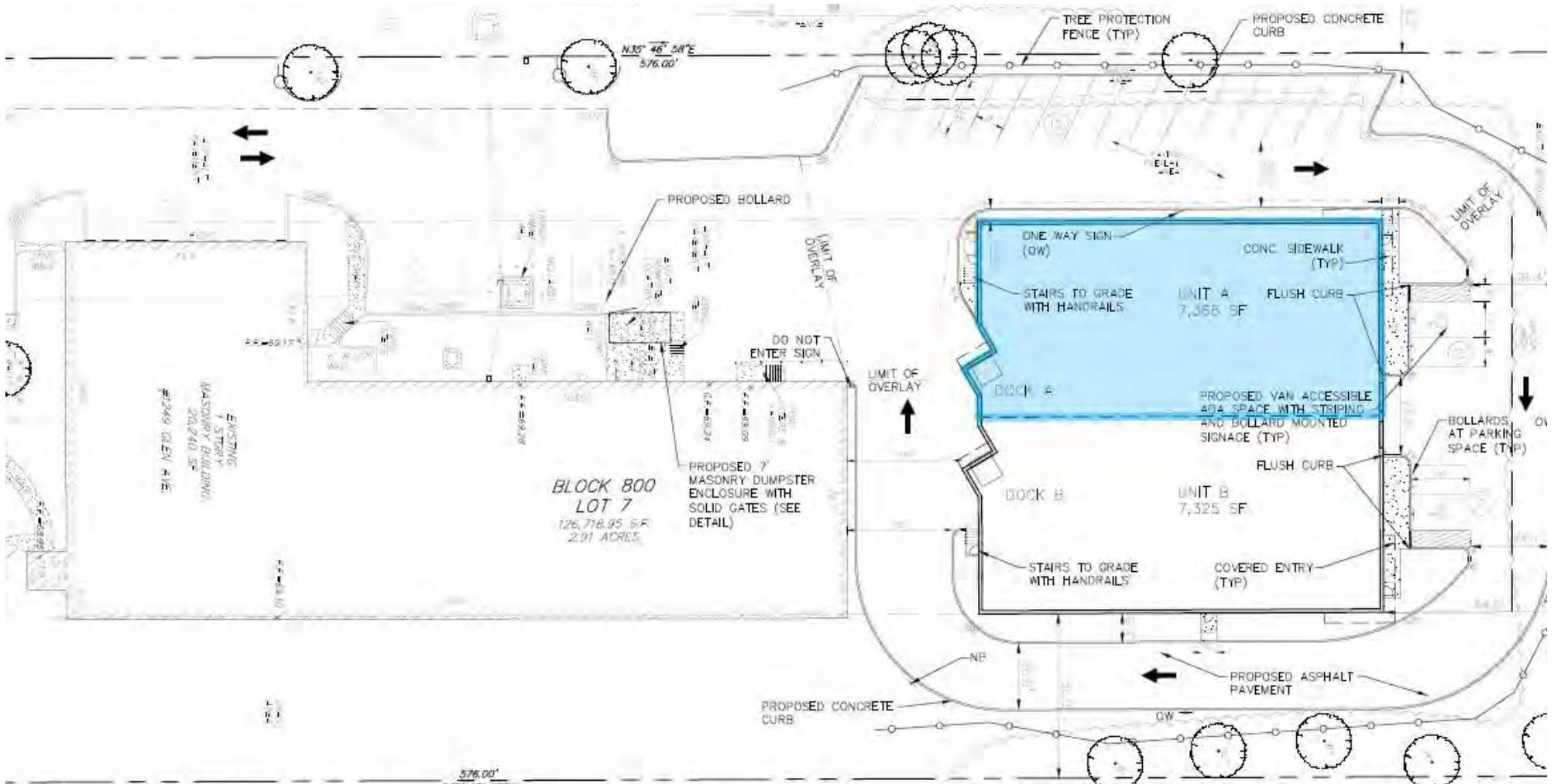


Contact Us

Phil Costa
 Vice President
 609.680.4942
 phil.costa@wolfcre.com

The foregoing information was furnished to us by sources which we deem to be reliable, but no warranty or representation is made as to the accuracy thereof. Subject to correction of errors, omissions, change of price, prior sale or withdrawal from market without notice.

SITE PLAN



The foregoing information was furnished to us by sources which we deem to be reliable, but no warranty or representation is made as to the accuracy thereof. Subject to correction of errors, omissions, change of price, prior sale or withdrawal from market without notice.

ADDITIONAL PICTURES



Images taken as of 9/18/2022

The foregoing information was furnished to us by sources which we deem to be reliable, but no warranty or representation is made as to the accuracy thereof. Subject to correction of errors, omissions, change of price, prior sale or withdrawal from market without notice.