

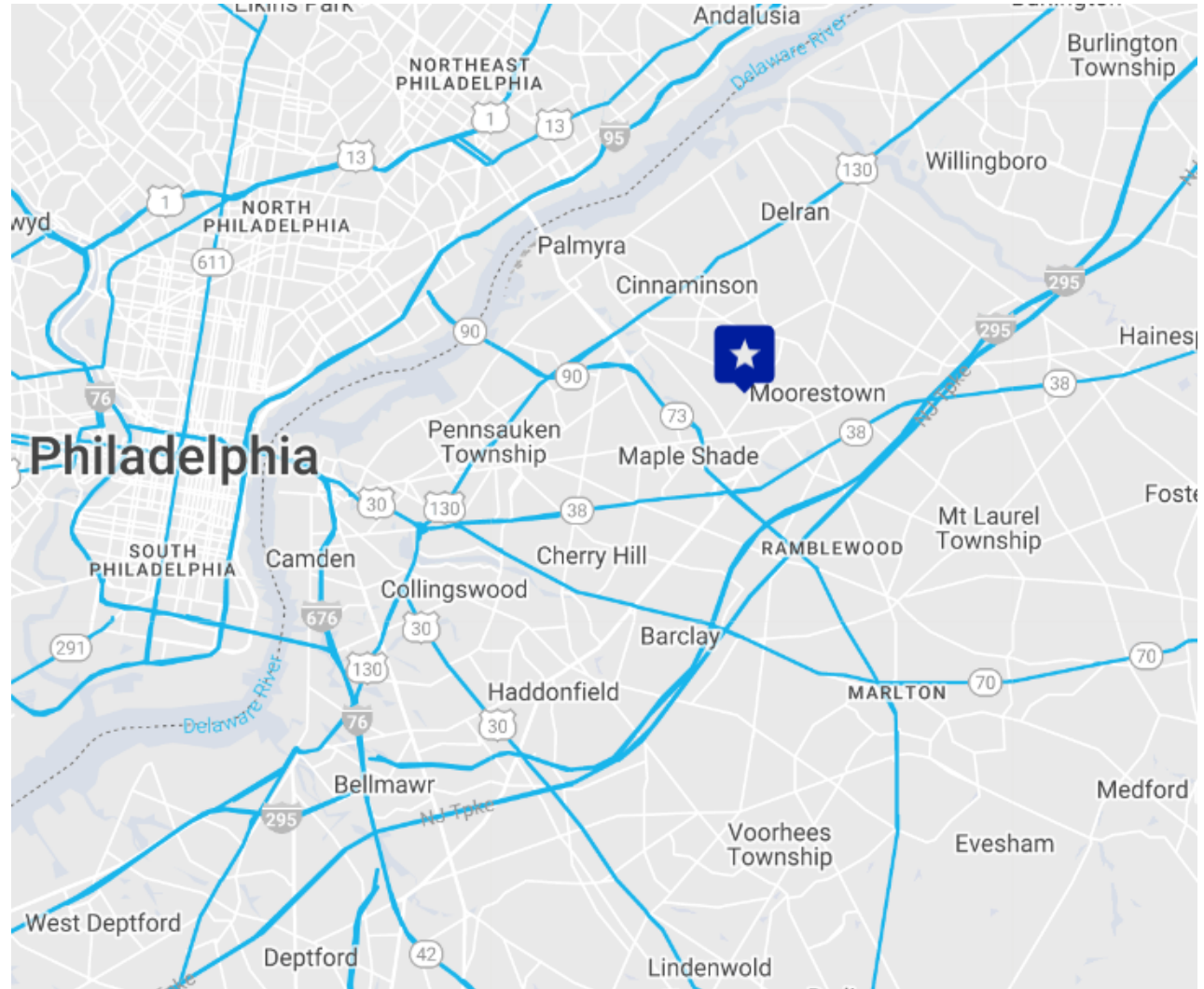
1249 GLEN AVENUE | MOORESTOWN, NJ

## PROPERTY DESCRIPTION

Uxl j }rxw	1249 Glen Avenue Moorestown, NJ 08057
\r.n'8\OJ 6j nj kun	+/- 7,366 SF <ul style="list-style-type: none"> <li>Office: TBD</li> <li>Warehouse: TBD</li> </ul>
Loading Dock	(2) 8'x10' Dock doors with levelers
Drive-in	(1) 10'x12'
Unj   nY{rl n	Call for information
Y{xy n{ }, '8J {nj } Mh   {ry}rxw	<ul style="list-style-type: none"> <li>23.5' Clear height</li> <li>240/480v 3-phase power</li> <li>6" reinforced concrete flooring</li> <li>Warehouse is heated and air-conditioned</li> <li>12 car parking spaces</li> <li>Zoned BP-1</li> <li>Q3 2022 occupancy</li> </ul>

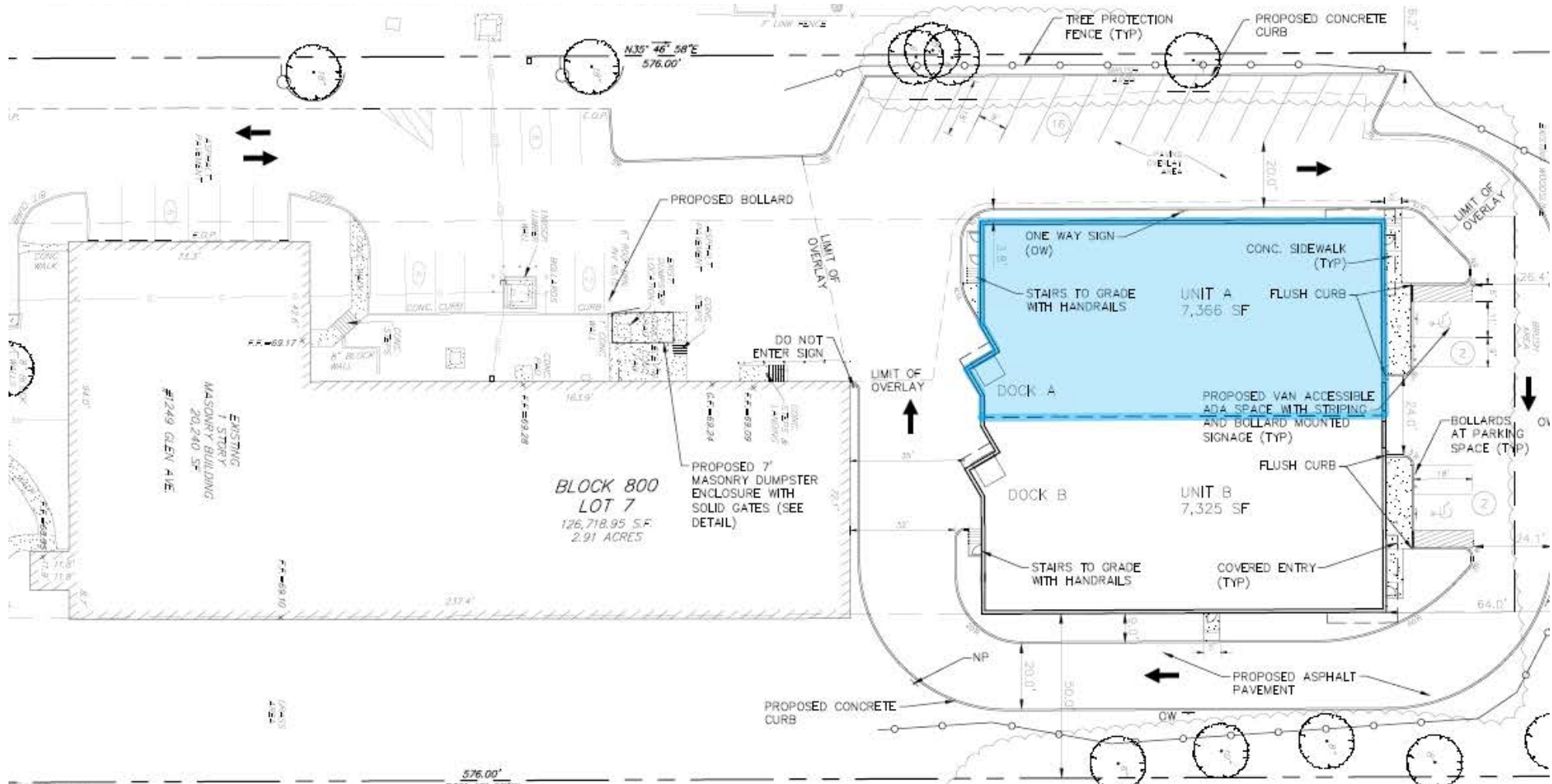
## Contact Us

Sean Kelly  
Vice President  
856 630 5806  
sean.kelly@wolfcre.com



The foregoing information was furnished to us by sources which we deem to be reliable, but no warranty or representation is made as to the accuracy thereof. Subject to correction of errors, omissions, change of price, prior sale or withdrawal from market without notice.

SITE PLAN



The foregoing information was furnished to us by sources which we deem to be reliable, but no warranty or representation is made as to the accuracy thereof. Subject to correction of errors, omissions, change of price, prior sale or withdrawal from market without notice.



ADDITIONAL PICTURES



The foregoing information was furnished to us by sources which we deem to be reliable, but no warranty or representation is made as to the accuracy thereof. Subject to correction of errors, omissions, change of price, prior sale or withdrawal from market without notice.