

# HIGHLY VISIBLE PROFESSIONAL OFFICE/MEDICAL BUILDING FOR SALE



**1099 WHITE HORSE ROAD  
VOORHEES, NJ**



**Evan Zweben**  
Executive Vice President  
856.261.5548  
evan.zweben@wolfcre.com

The foregoing information was furnished to us by sources which we deem to be reliable, but no warranty or representation is made as to the accuracy thereof. Subject to correction of errors, omissions, change of price, prior sale or withdrawal from market without notice.



**Wolf Commercial Real Estate**  
**www.WolfCRE.com**



## PROPERTY DESCRIPTION

**Location:** 1099 White Horse Road  
Voorhees, NJ 08043

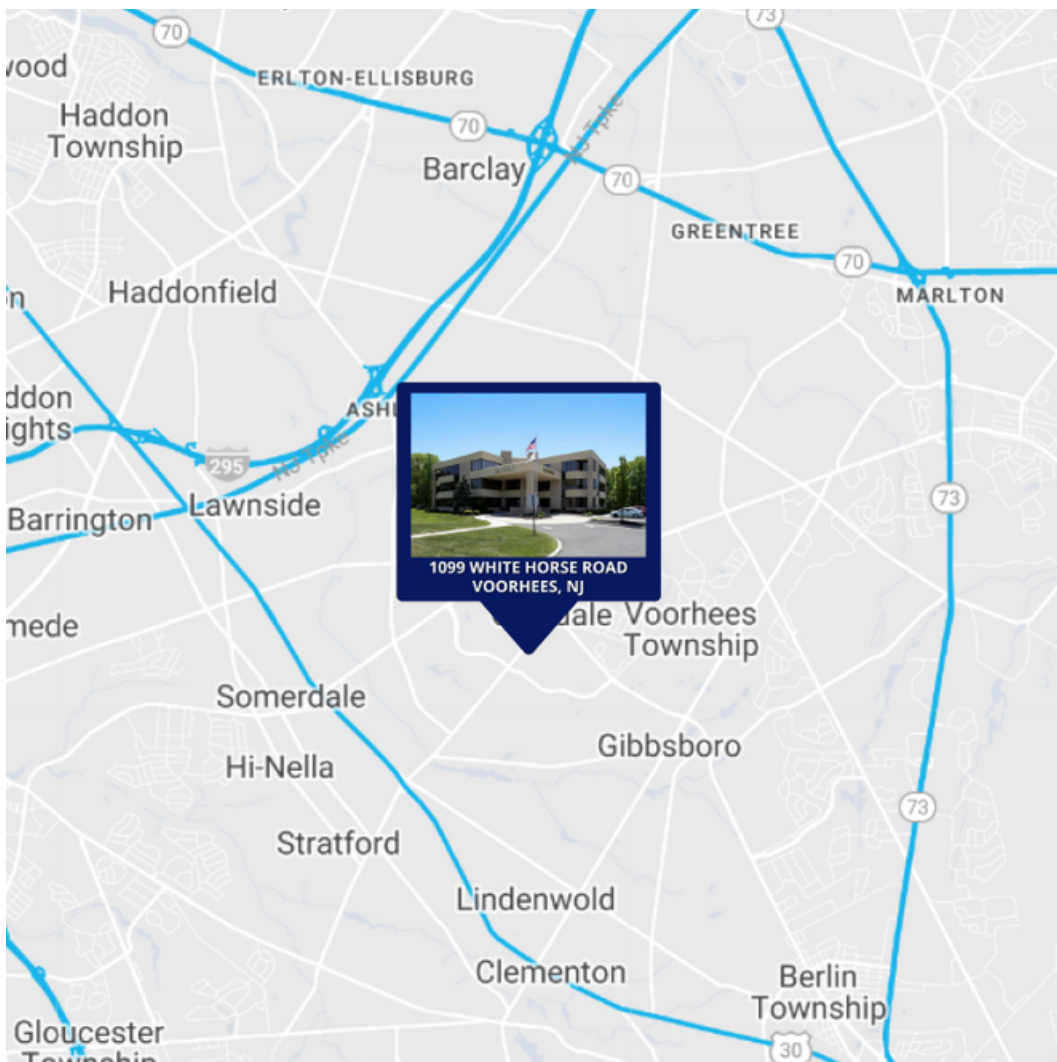
**Size/SF Available:** +/- 30,000 SF

**Sale Price:** \$1,750,000.00

## PROPERTY AREA/HIGHLIGHTS

- Three story building
- Ideal for office users
- Situated in densely populated area
- Minutes from PATCO Train Station
- Surrounded by various national retailers and restaurants
- Less than 5 miles from I-295, White Horse Pike, and NJ Turnpike

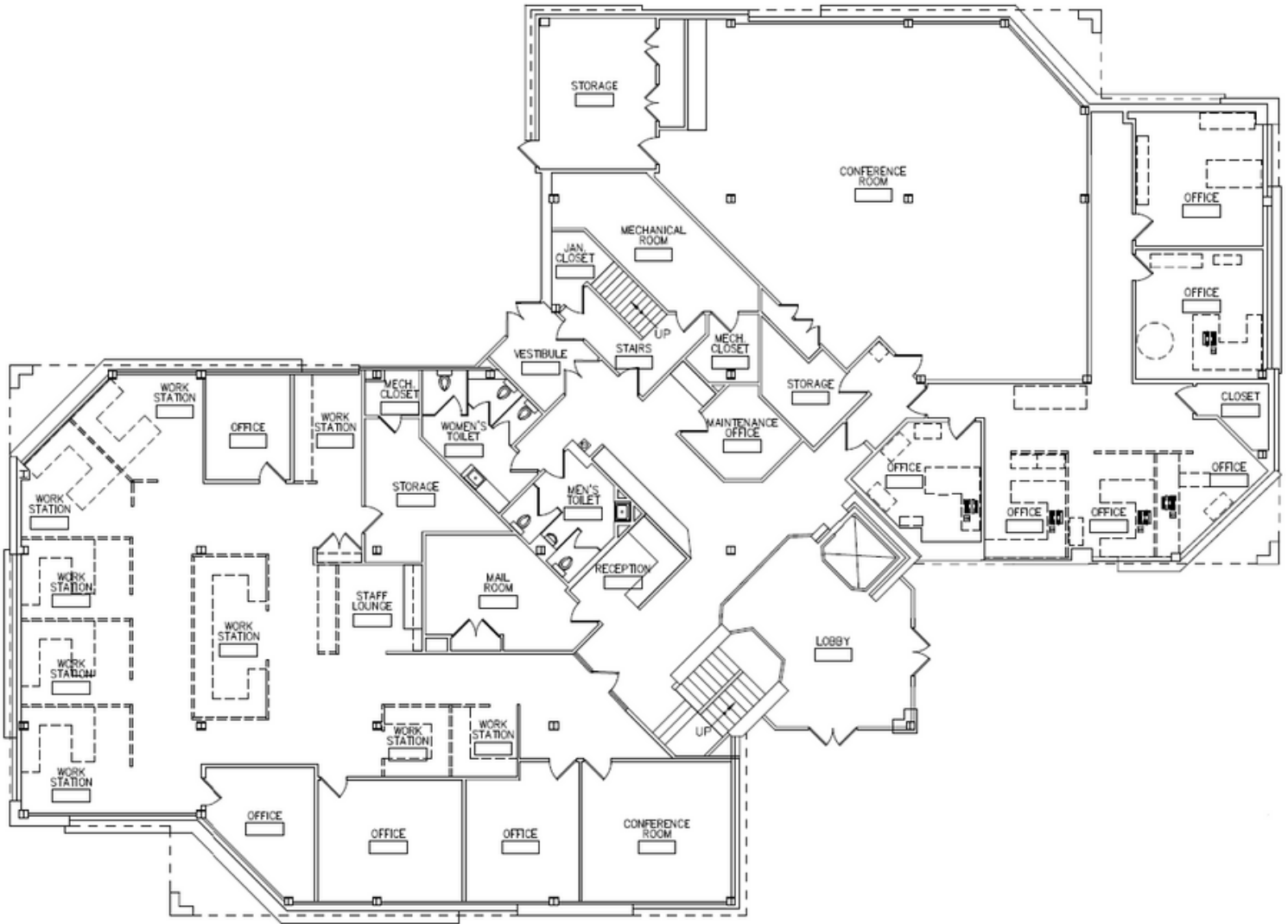
## AERIAL MAP



The foregoing information was furnished to us by sources which we deem to be reliable, but no warranty or representation is made as to the accuracy thereof. Subject to correction of errors, omissions, change of price, prior sale or withdrawal from market without notice.

## FLOOR PLANS

### FIRST FLOOR



The foregoing information was furnished to us by sources which we deem to be reliable, but no warranty or representation is made as to the accuracy thereof. Subject to correction of errors, omissions, change of price, prior sale or withdrawal from market without notice.

## FLOOR PLANS

### SECOND FLOOR

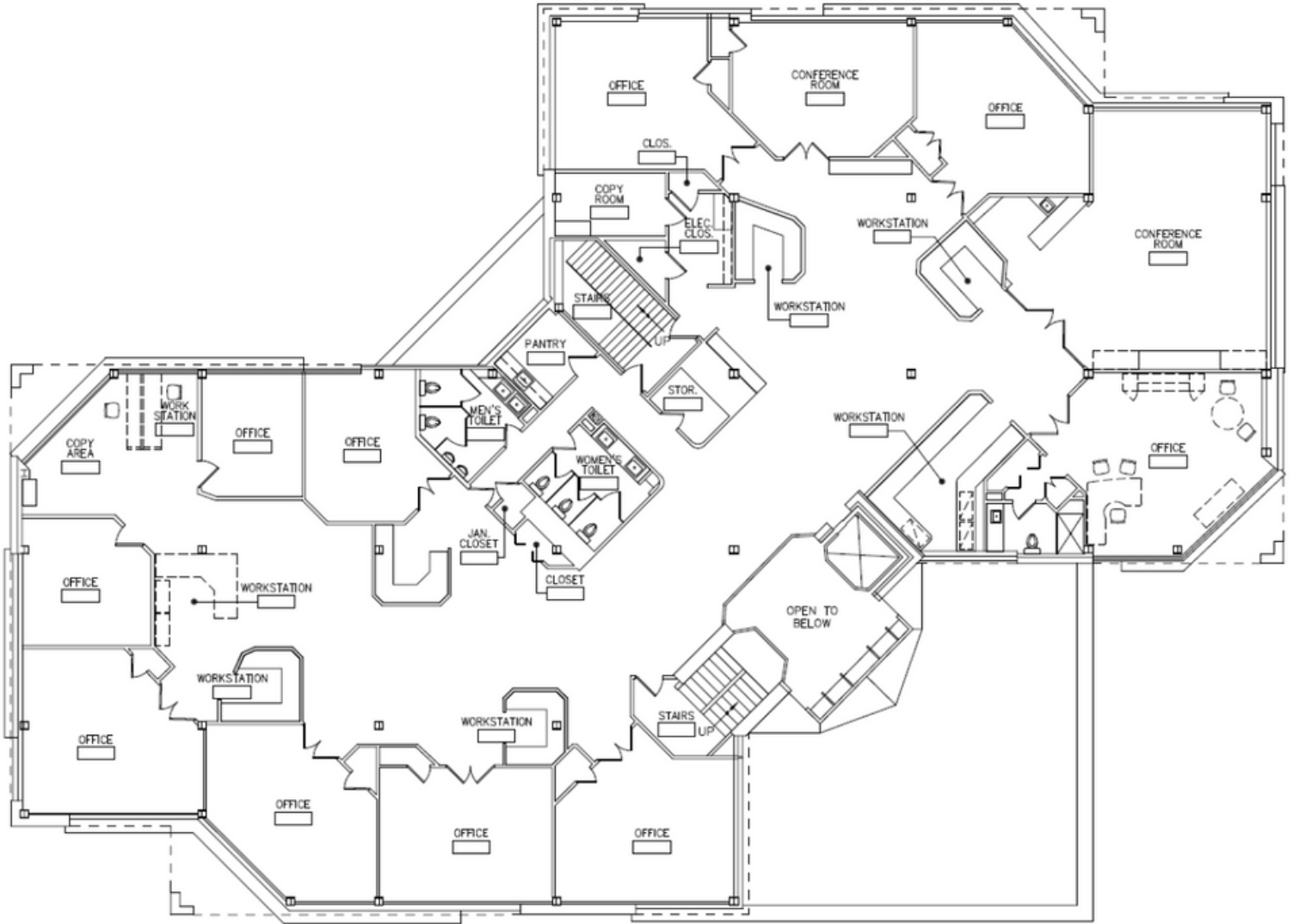


The foregoing information was furnished to us by sources which we deem to be reliable, but no warranty or representation is made as to the accuracy thereof. Subject to correction of errors, omissions, change of price, prior sale or withdrawal from market without notice.



## FLOOR PLANS

### THIRD FLOOR



The foregoing information was furnished to us by sources which we deem to be reliable, but no warranty or representation is made as to the accuracy thereof. Subject to correction of errors, omissions, change of price, prior sale or withdrawal from market without notice.