

# PREMIER SINGLE STORY OFFICE PARK FOR LEASE



## LAURELWOOD CORPORATE CENTER VOORHEES, NJ

**Evan Zweben**  
Executive Vice President  
856.261.5548  
evan.zweben@wolfcre.com



The foregoing information was furnished to us by sources which we deem to be reliable, but no warranty or representation is made as to the accuracy thereof.  
Subject to correction of errors, omissions, change of price, prior sale or withdrawal from market without notice.



**Wolf Commercial Real Estate**  
**www.WolfCRE.com**





## PROPERTY DESCRIPTION

**Location:** 1101, 1103, 1105 Laurel Oak Road  
Voorhees, NJ 08043

**Size/SF Available:** 1101 Laurel Oak:  
Suite 120: 3,552 SF

1103 Laurel Oak:  
Fully Leased

1105 Laurel Oak:  
Suite 136: 2,213 SF

**Lease Price:** Call for information

## PROPERTY AREA/HIGHLIGHTS

- Single-story office suites available for lease
- Outdoor break areas
- High-end finishes throughout with full height vision panels and solid-core doors on all private offices
- Direct access from Voorhees Township bikeway network
- Adjacent to Voorhees Corporate Center
- Close proximity to medical offices, restaurants, retailers, fitness centers, etc.
- Quick access to Routes 30 & 73, and I-295

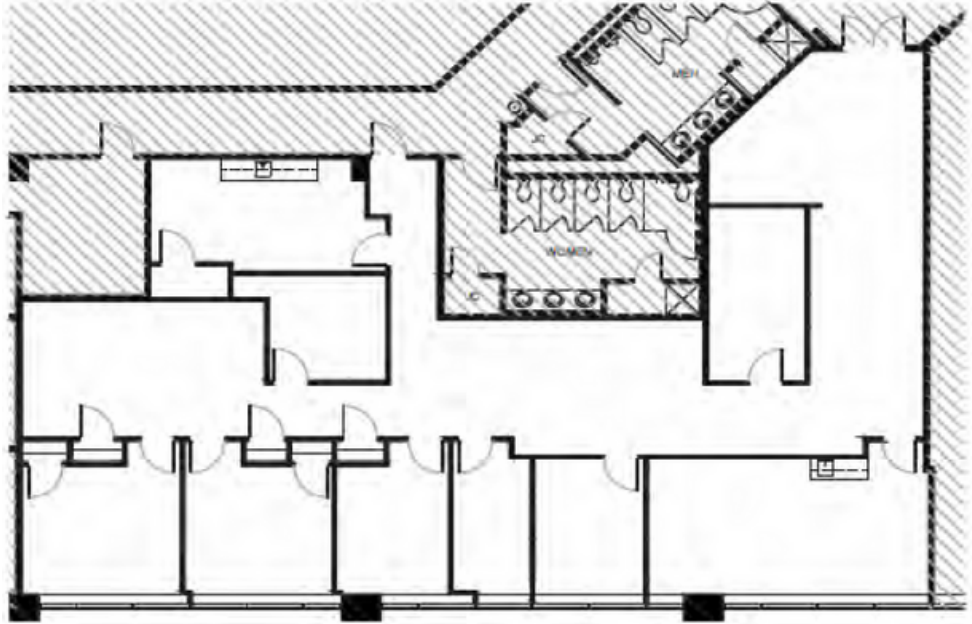
## AERIAL MAP



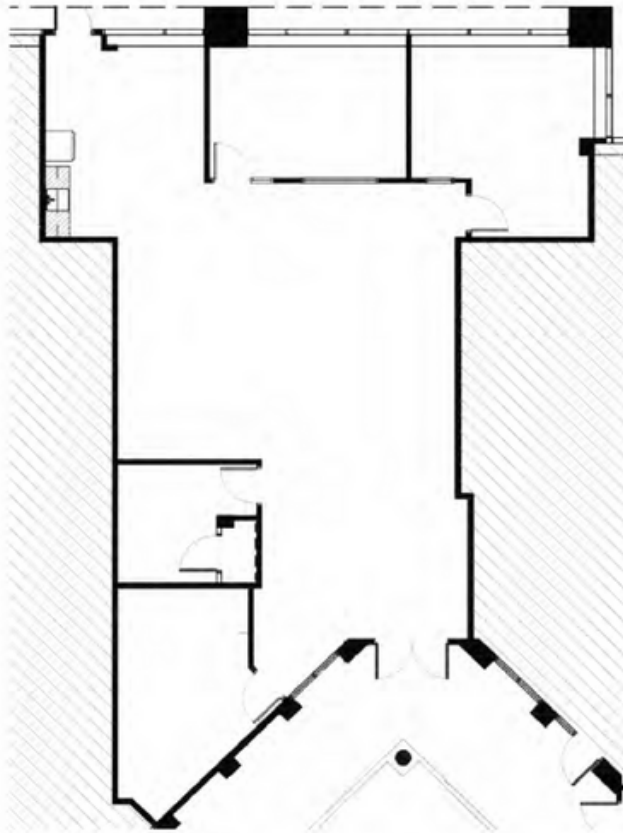
The foregoing information was furnished to us by sources which we deem to be reliable, but no warranty or representation is made as to the accuracy thereof. Subject to correction of errors, omissions, change of price, prior sale or withdrawal from market without notice.

## FLOOR PLANS

1101 Laurel Oak  
Suite 120: 3,552 SF



1105 Laurel Oak  
Suite 136: 2,213 SF



The foregoing information was furnished to us by sources which we deem to be reliable, but no warranty or representation is made as to the accuracy thereof.  
Subject to correction of errors, omissions, change of price, prior sale or withdrawal from market without notice.