



1101, 1103, 1105 LAUREL OAK ROAD | VOORHEES, NJ

PROPERTY DESCRIPTION

Location 1101, 1103, 1105 Laurel Oak Road
Voorhees, NJ 08043

Size / SF Available

AVAILABLE SUITES

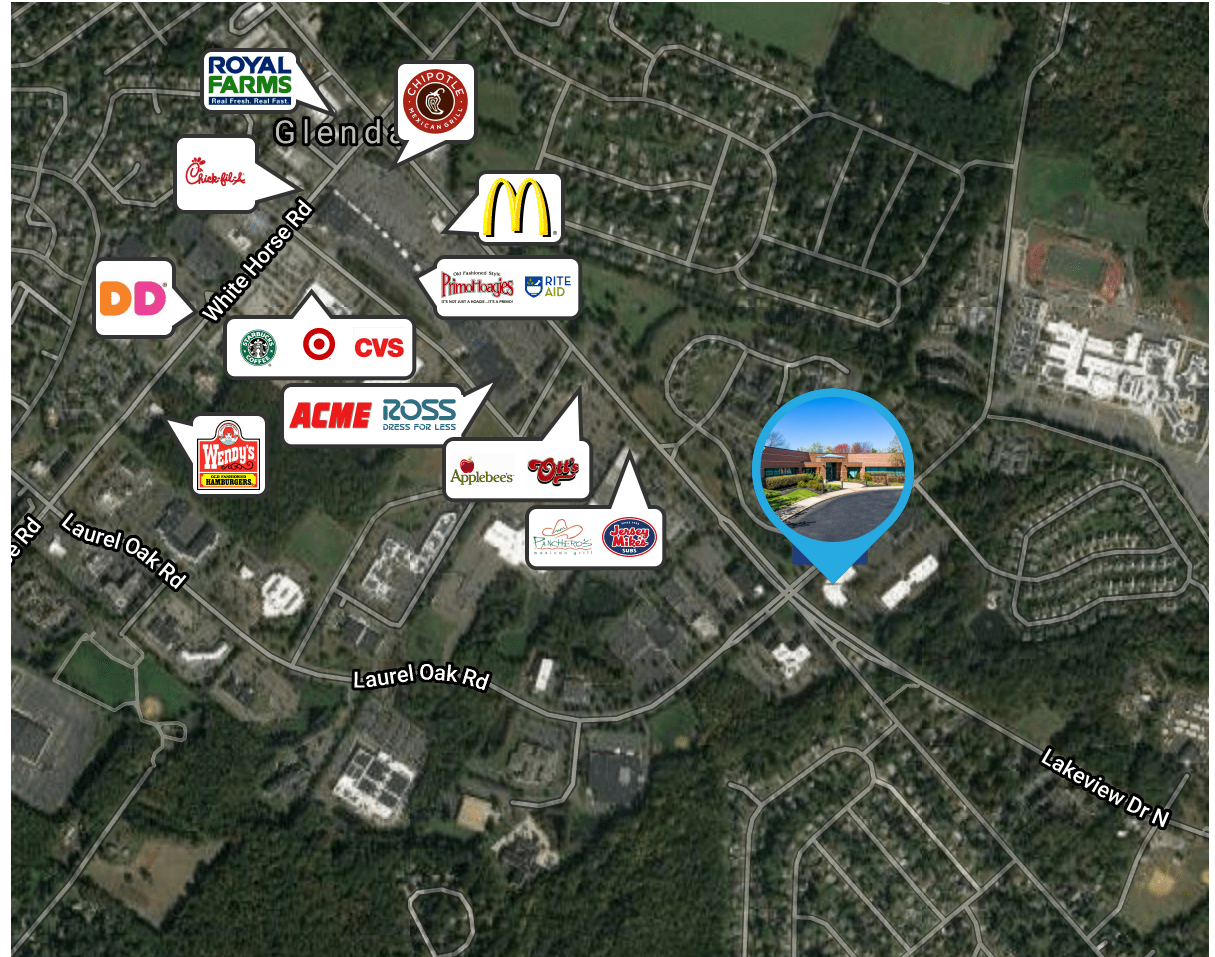
1101 Laurel Oak:
Suite 110 - 1,707 SF
Suite 120 - 3,552 SF

1103 Laurel Oak:
Suite 160A - 2,352 SF

1105 Laurel Oak:
Suite 136 - 2,213 SF

Property / Area Description

- Single-story office suites available for lease
- Outdoor break areas
- High-end finishes throughout with full height vision panels and solid-core doors on all private offices
- Direct access from Voorhees Township bikeway network
- Adjacent to Voorhees Corporate Center
- Close proximity to medical offices, restaurants, retailers, fitness centers, etc.
- Quick access to Routes 30, and 73, and I-295



Contact Us

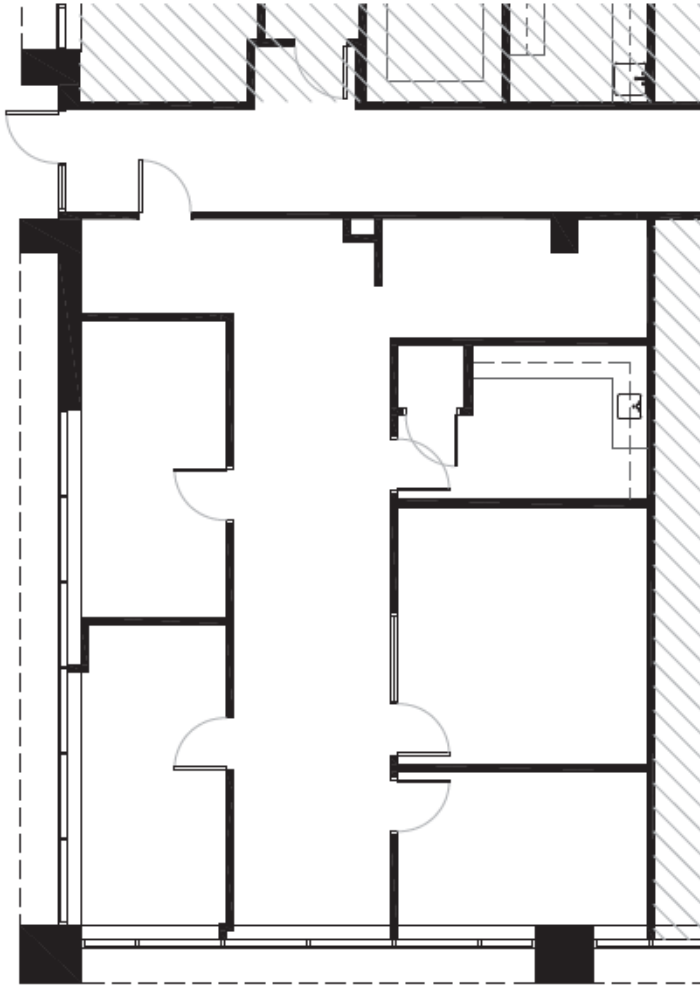
Evan Zweben
Executive Vice President
856.261.5548
evan.zweben@wolfcre.com

follow us:    

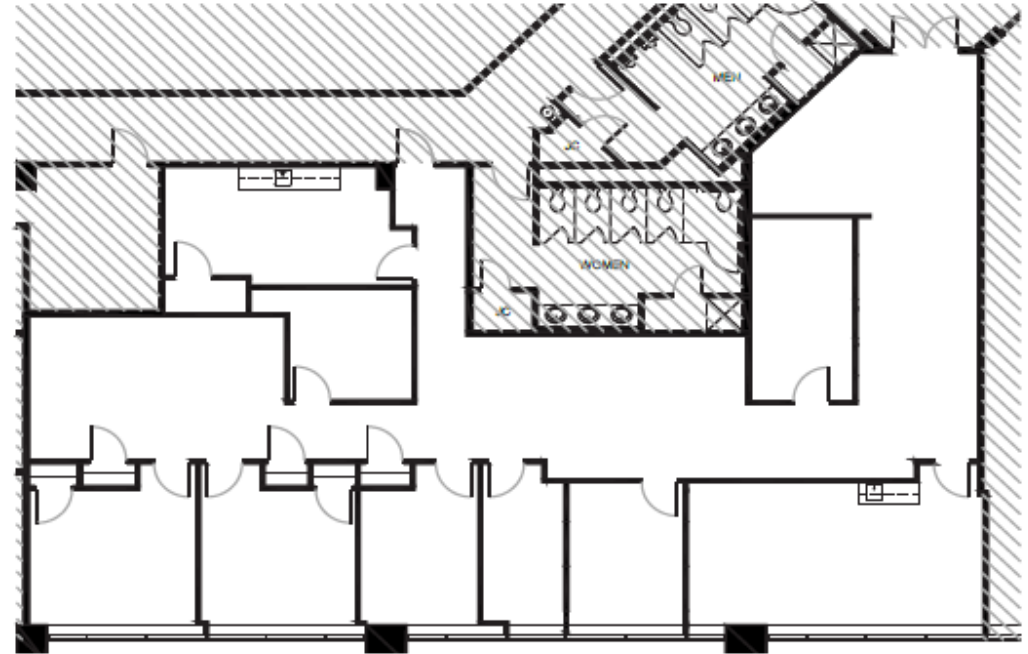
The foregoing information was furnished to us by sources which we deem to be reliable, but no warranty or representation is made as to the accuracy thereof. Subject to correction of errors, omissions, change of price, prior sale or withdrawal from market without notice.

FLOOR PLANS

SUITE 110 - 1,707 SF



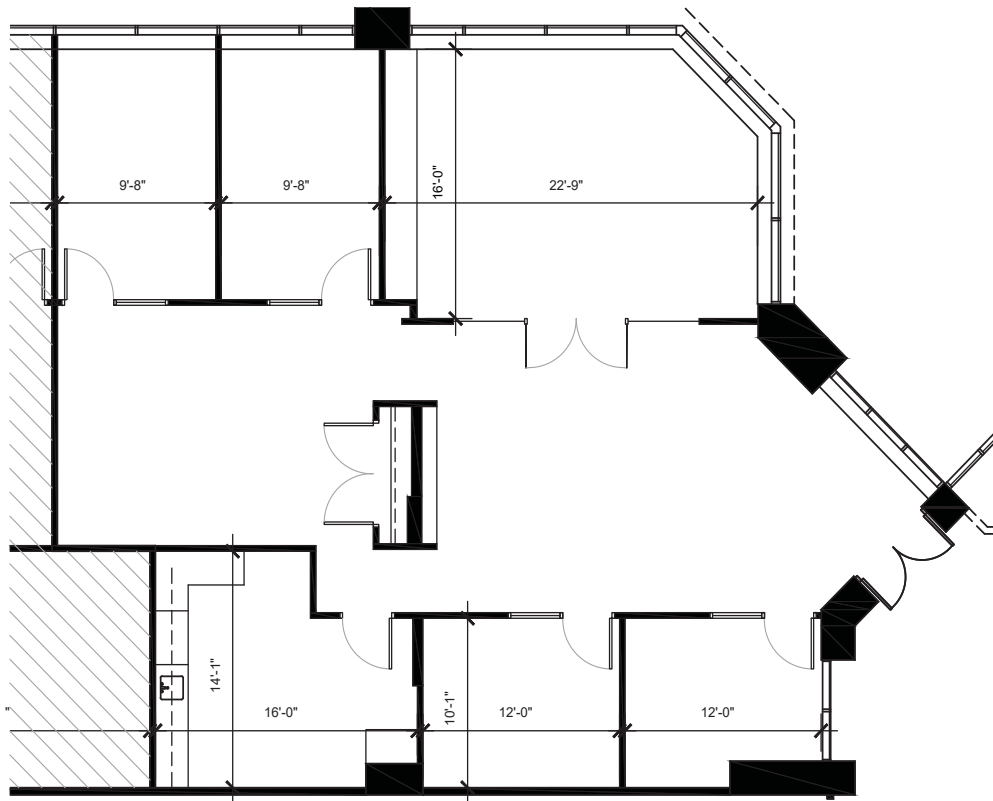
SUITE 120 - 3,552 SF



The foregoing information was furnished to us by sources which we deem to be reliable, but no warranty or representation is made as to the accuracy thereof. Subject to correction of errors, omissions, change of price, prior sale or withdrawal from market without notice.

FLOOR PLANS

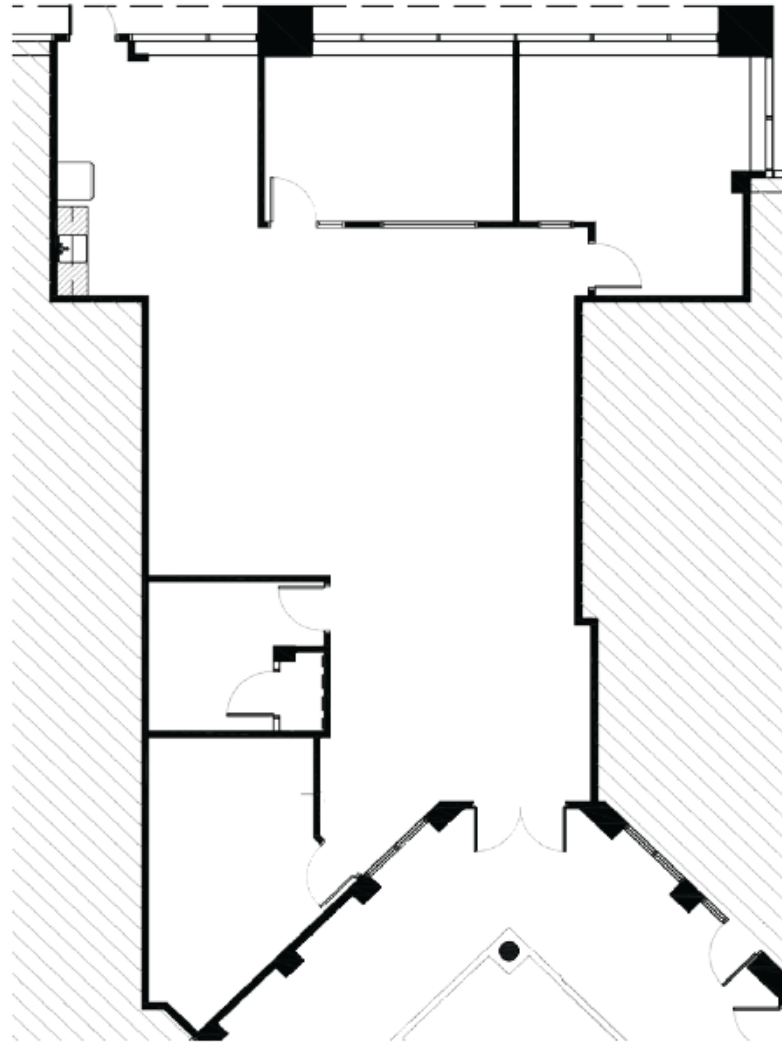
SUITE 160A - 2,352 SF



The foregoing information was furnished to us by sources which we deem to be reliable, but no warranty or representation is made as to the accuracy thereof. Subject to correction of errors, omissions, change of price, prior sale or withdrawal from market without notice.

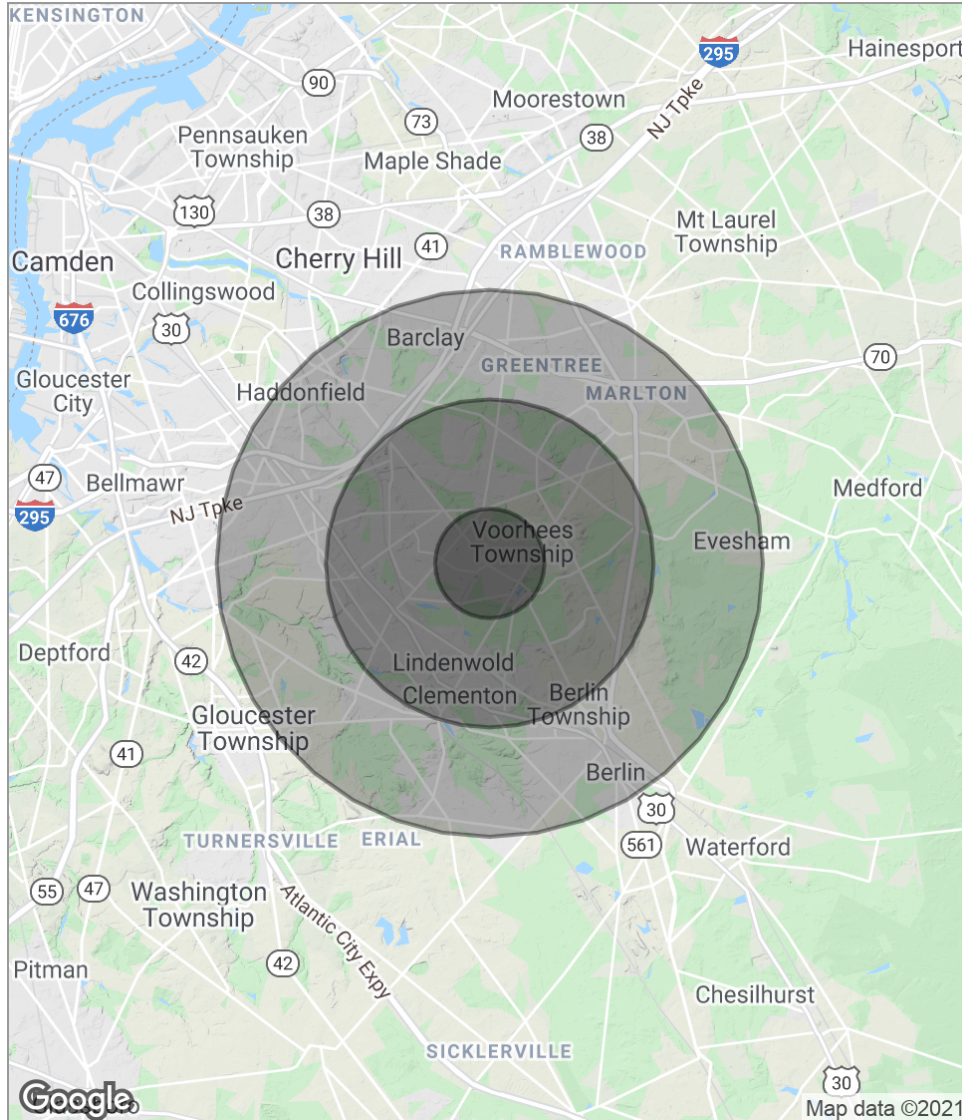
FLOOR PLANS

SUITE 136 - 2,213 SF



The foregoing information was furnished to us by sources which we deem to be reliable, but no warranty or representation is made as to the accuracy thereof. Subject to correction of errors, omissions, change of price, prior sale or withdrawal from market without notice.

DEMOGRAPHICS MAP



POPULATION	1 MILE	3 MILES	5 MILES
Total population	4,893	79,412	208,116
Median age	45.8	40.1	40.0
Median age (male)	44.5	38.8	38.8
Median age (Female)	46.1	41.1	41.0
HOUSEHOLDS & INCOME	1 MILE	3 MILES	5 MILES
Total households	1,816	30,552	79,032
# of persons per HH	2.7	2.6	2.6
Average HH income	\$120,020	\$98,226	\$94,496
Average house value	\$433,472	\$341,926	\$319,982

** Demographic data derived from 2010 US Census*



The foregoing information was furnished to us by sources which we deem to be reliable, but no warranty or representation is made as to the accuracy thereof. Subject to correction of errors, omissions, change of price, prior sale or withdrawal from market without notice.