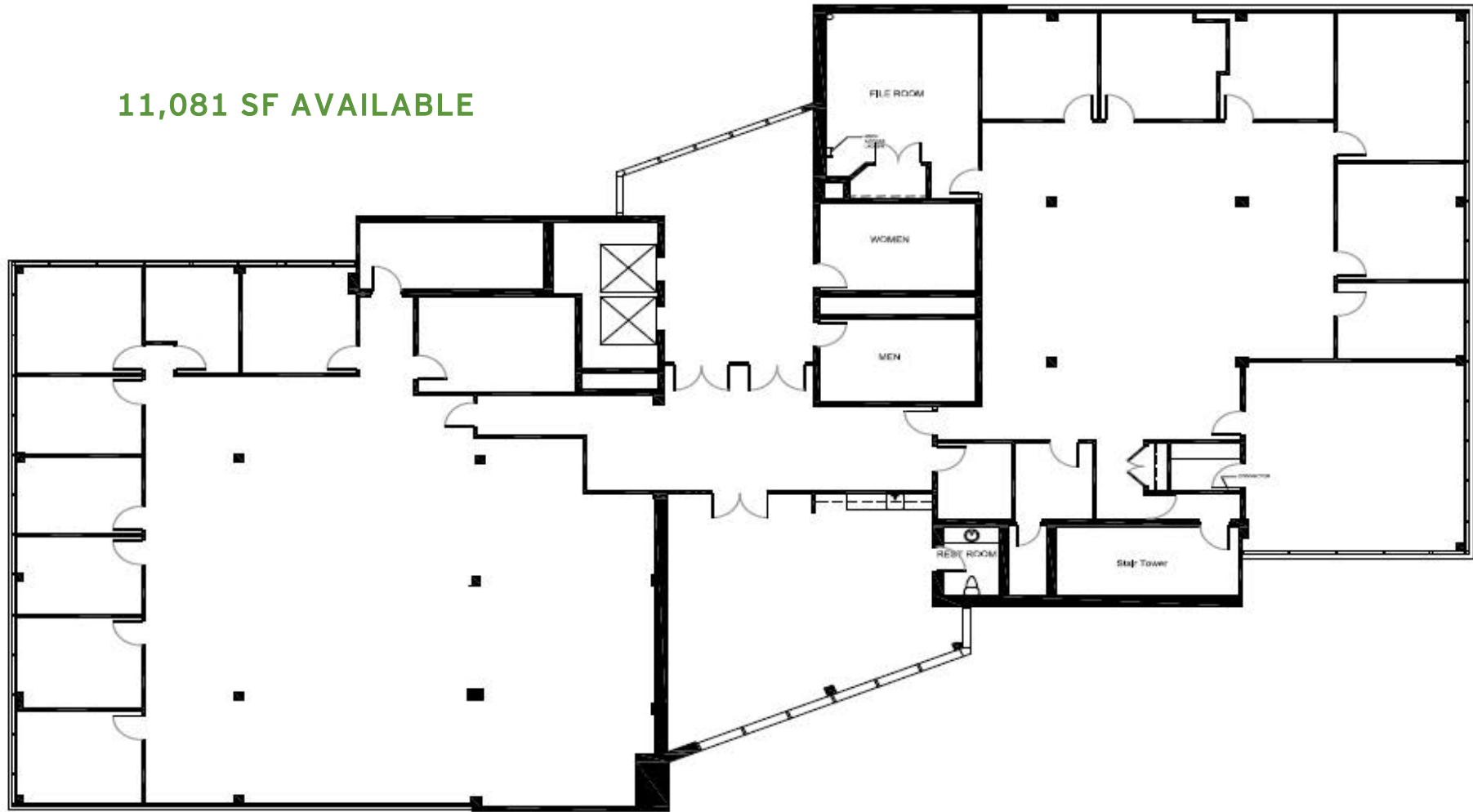


**3RD FLOOR PLAN**

**11,081 SF AVAILABLE**



The foregoing information was furnished to us by sources which we deem to be reliable, but no warranty or representation is made as to the accuracy thereof. Subject to correction of errors, omissions, change of price, prior sale or withdrawal from market without notice.

Contact: Evan Zweben  
Executive Vice President  
856.261.5548  
evan.zweben@wolfcre.com



Wolf Commercial Real Estate

[www.WolfCRE.com](http://www.WolfCRE.com)

MARLTON, NJ | PHILADELPHIA | KING OF PRUSSIA, PA