



NOW LEASING: PREMIER MOUNT LAUREL OFFICE SPACE



400 FELLOWSHIP ROAD | MOUNT LAUREL, NJ



Wolf Commercial Real Estate
www.WolfCRE.com



PROPERTY DESCRIPTION

Location	400 Fellowship Road Mount Laurel, NJ 08054
Size / SF Available	2,200 - 20,000 SF
Lease Price	\$22.50 + Electric

Newly renovated class A office building located just off of Route 73 with easy access to I-295 and the New Jersey Turnpike. Renovations include common area, lobbies, restrooms, landscaping, parking and building systems

- Turnkey service provided for professional relocation, design and fit out
- New, financially strong owner with on-site presence
- Highly visible building signage available along Fellowship Road
- Close to a wide range of amenities including restaurants and cafes, shopping, hotels, banks & entertainment
- Ideal for professional, medical, and technical business
- Abundant parking

Contact Us

Bethany Brown
Vice President
267.226.6602
bethany.brown@wolfcre.com

Jason Wolf
Managing Principal
215.588.8800
jason.wolf@wolfcre.com



follow us:    

The foregoing information was furnished to us by sources which we deem to be reliable, but no warranty or representation is made as to the accuracy thereof. Subject to correction of errors, omissions, change of price, prior sale or withdrawal from market without notice.

PROPOSED ENTRANCE



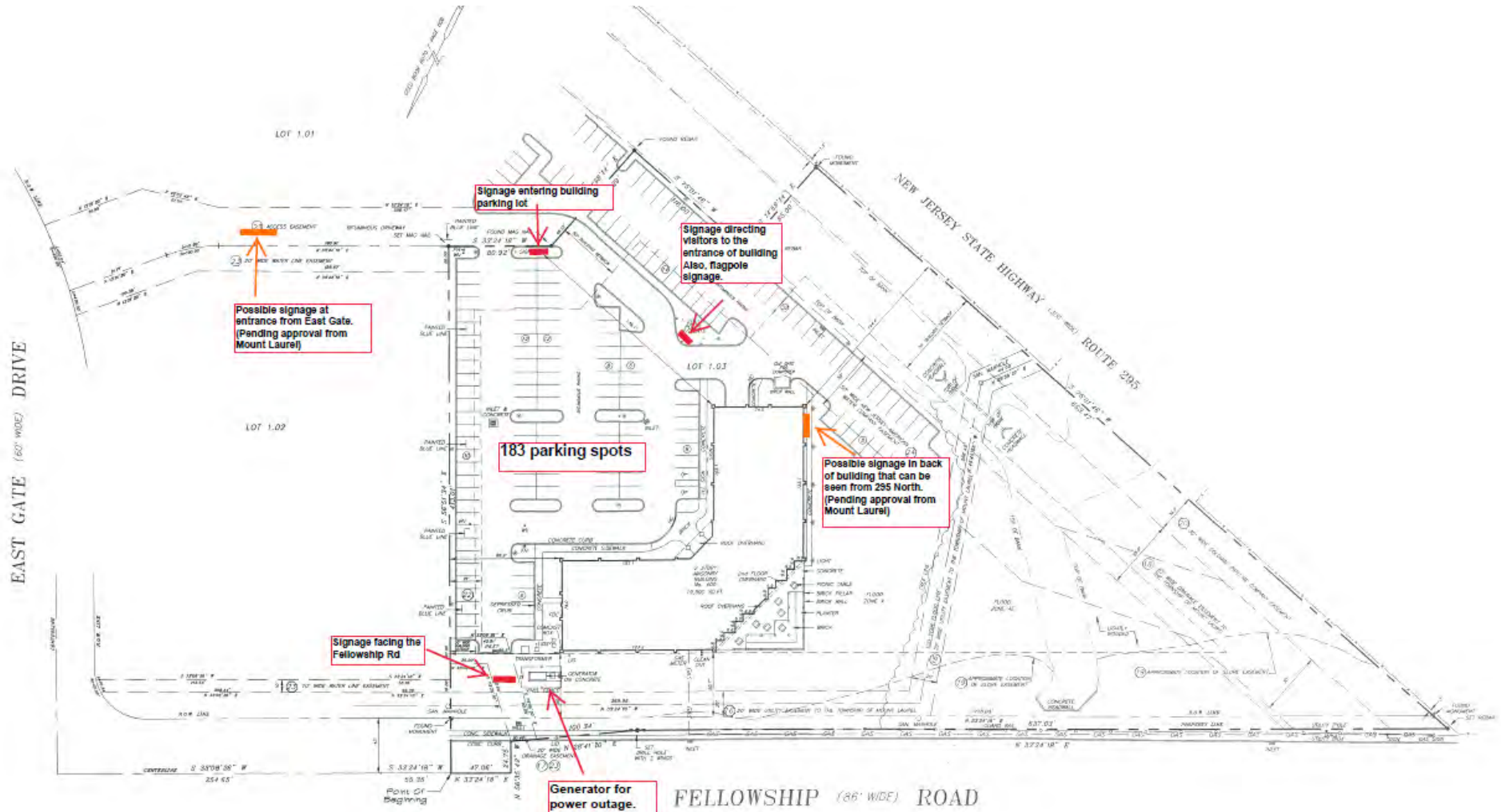
The foregoing information was furnished to us by sources which we deem to be reliable, but no warranty or representation is made as to the accuracy thereof. Subject to correction of errors, omissions, change of price, prior sale or withdrawal from market without notice.

SECOND FLOOR AS BUILT



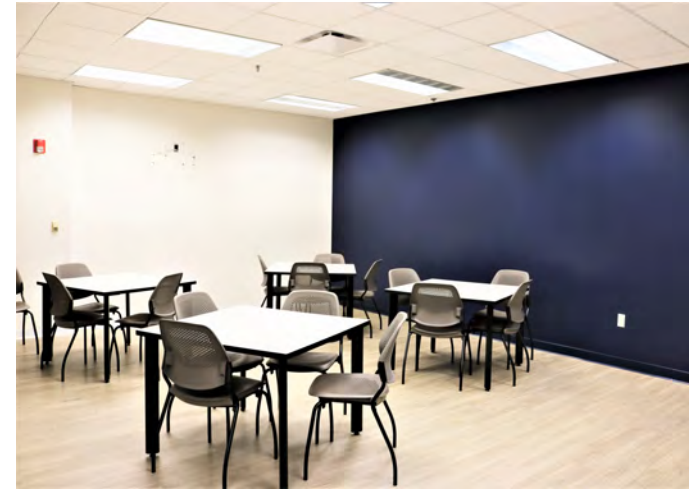
The foregoing information was furnished to us by sources which we deem to be reliable, but no warranty or representation is made as to the accuracy thereof. Subject to correction of errors, omissions, change of price, prior sale or withdrawal from market without notice.

PROPOSED SITE IMPROVEMENTS



The foregoing information was furnished to us by sources which we deem to be reliable, but no warranty or representation is made as to the accuracy thereof. Subject to correction of errors, omissions, change of price, prior sale or withdrawal from market without notice.

ADDITIONAL PHOTOS



The foregoing information was furnished to us by sources which we deem to be reliable, but no warranty or representation is made as to the accuracy thereof. Subject to correction of errors, omissions, change of price, prior sale or withdrawal from market without notice.

PROPOSED OUTDOOR RENDERINGS



The foregoing information was furnished to us by sources which we deem to be reliable, but no warranty or representation is made as to the accuracy thereof. Subject to correction of errors, omissions, change of price, prior sale or withdrawal from market without notice.

BROKER BIO

**BETHANY BROWN**
VICE PRESIDENT

Bethany Brown joined Wolf Commercial Real Estate in 2020 and specializes in developing and implementing creative and flexible real estate strategies for users in the Southern New Jersey and Philadelphia markets.

bethany.brown@wolfcre.com | D 856 857 6396 | M 267 226 6602

**JASON M. WOLF**
MANAGING PRINCIPAL

Jason has 26 years of Landlord, Tenant and Corporate representation experience specializing in office, retail, medical, industrial and investment properties in Southern New Jersey and the Philadelphia region.

jason.wolf@wolfcre.com | D 856 857 6301 | M 215 588 8800

The foregoing information was furnished to us by sources which we deem to be reliable, but no warranty or representation is made as to the accuracy thereof. Subject to correction of errors, omissions, change of price, prior sale or withdrawal from market without notice.